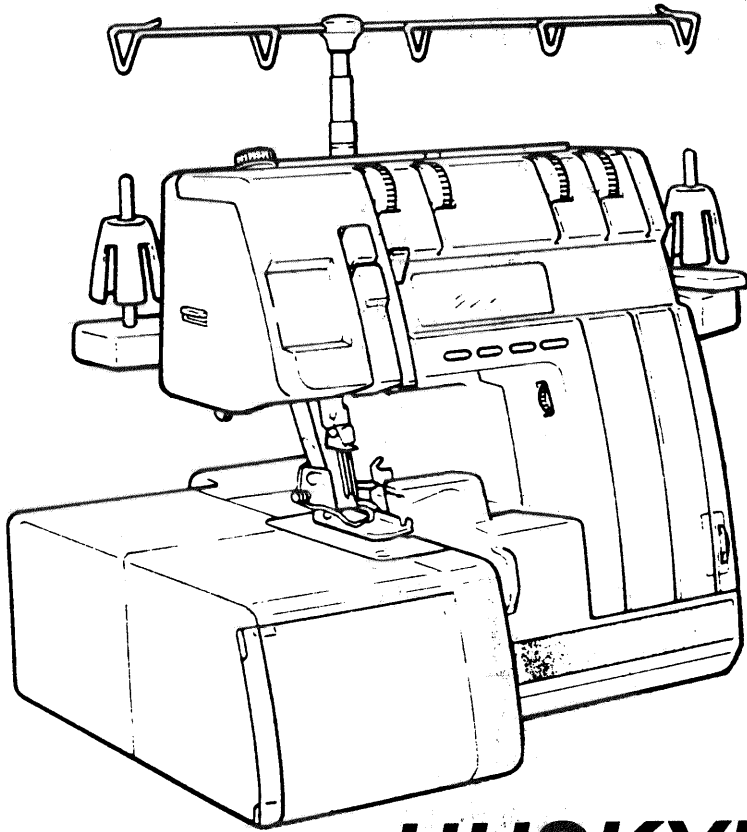
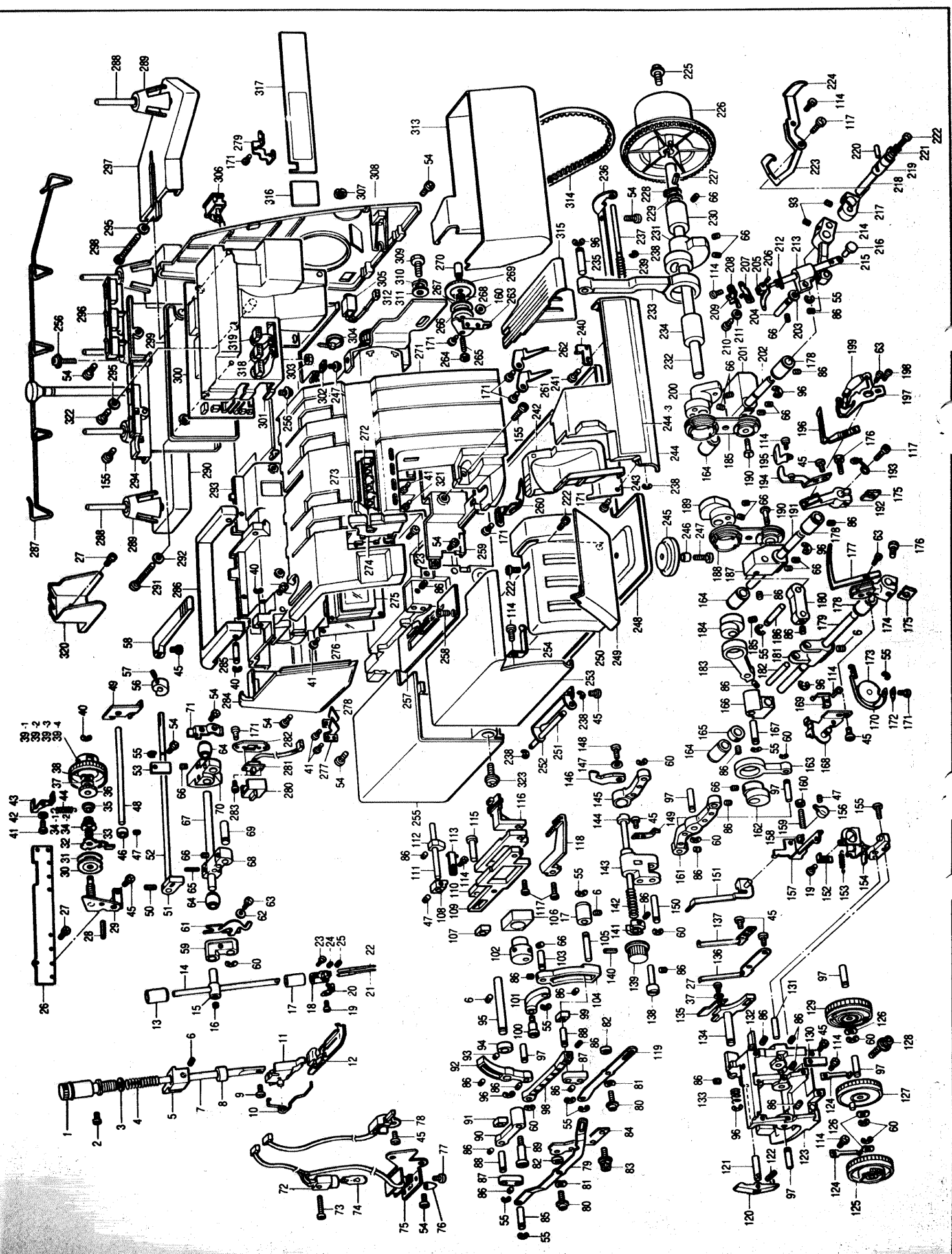


**Spare parts**  
**Ersatzteile**  
**Pièces détachées**  
**Reservdelar**



**HUSKYLOCK**  
**680 CD**

104 21 65-96



Pos	Part no	Description	Pos	Part no	Description	Pos	Part no	Description
1	415 45 68-01	Pressure adjustment dial	56	415 46 07-01	Tension release cam	116	415 46 48-01	Main feed dog
2	415 45 69-01	Screw	57	415 41 22-01	Screw	117	415 31 23-01	Screw
3	415 45 70-01	Washer	58	415 46 08-01	Presser foot lever	118	415 47 98-01	Differential feed dog
4	415 45 71-01	Presser adjustment spring	59	415 31 79-01	Needle bar link	119	415 46 50-01	Feed adjusting link C
5	415 41 57-01	Presser bar bracket	60	415 31 87-01	Stop ring	120	415 46 51-01	Lower blade movable lever
6	415 41 58-01	Screw	61	415 47 97-01	Thread take-up	121	415 42 38-01	Lever holder shaft
7	415 41 58-01	Presser bar	62	415 30 98-01	Spring washer	122	415 42 40-01	Spring pin
8	415 41 59-01	Presser bar felt	63	415 41 39-01	Screw	123	415 47 99-01	Needle plate base
9	415 30 34-01	Screw	64	415 41 30-01	Crank shaft bushing	124	415 46 53-01	Dial guide spring
10	415 45 72-01	Presser foot spring	65	415 46 10-01	Spring pin	125	415 46 54-01	Differential feed dial
11	415 45 73-01	Presser foot holder assembly	66	415 32 03-01	Screw	126	415 46 55-01	Wave washer
12	415 47 93-01	Presser foot assembly	67	415 46 11-01	Needle bar crank shaft	127	415 46 56-01	Feed dial
13	415 31 81-01	Needle bar bushing	68	415 46 12-01	Needle bar crank	128	415 46 57-01	Screw
14	415 45 75-01	Needle bar	69	415 41 36-01	Needle bar link shaft A	129	415 46 58-01	Lower blade dial assembly
15	415 31 80-01	Needle bar connecting stud	70	415 46 13-01	Needle bar driving lever	130	415 46 59-01	Control front cover spring
16	415 45 76-01	Screw	71	415 41 34-01	Upper shaft bushing presser	131	415 46 60-01	Stud shaft
17	415 45 77-01	Needle bar bushing, lower	72	415 46 14-01	Sew-light assembly	132	415 46 61-01	Lower blade guide shaft
18	415 47 94-01	Needle clamp	73	415 46 15-01	Screw	133	415 42 42-01	Lower blade spring
19	415 45 79-01	Screw	74	415 34 39-01	Sew-light bulb	134	415 48 00-01	Lower blade holder
20	415 47 95-01	Needle bar thread guide	75	415 46 16-01	Sew-light plate	135	415 46 63-01	Lower blade
21	401 60 96-01	Needles 5xNM90	76	415 41 72-01	Sew-light switch cap	136	415 48 01-01	Fixed needle guard A
22	401 60 92-01	Needles 5xNM80	77	415 41 73-01	Screw	137	415 48 02-01	Fixed needle guard B
23	415 42 69-01	Screw	78	415 47 64-01	Sensor assembly	138	415 46 65-01	Upper blade holder guide shaft
24	415 45 81-01	Screw	79	415 46 17-01	Differential adjusting link C	139	415 46 66-01	Upper blade knob
25	415 47 96-01	Screw	80	415 44 39-01	Screw	140	415 46 67-01	Spring pin
26	415 45 82-01	Thread tension bracket	81	415 45 12-01	Wave washer	141	415 48 03-01	Upper blade holder guide
27	415 30 99-01	Screw	82	415 46 19-01	Spacer	142	415 46 69-01	Upper blade driver spring
28	415 45 83-01	Spring pin	83	415 46 20-01	Set screw	143	415 46 70-01	Upper blade driving plate
29	415 45 84-01	Thread tension base assembly	84	415 46 21-01	Material plate cover bracket	144	415 46 71-01	Upper blade holder
30	415 45 85-01	Thread tension disc A	85	415 46 22-01	Adjusting link shaft	145	415 48 04-01	Upper blade arm
31	415 43 52-01	Tension disc	86	415 32 14-01	Screw	146	415 46 73-01	Upper blade
32	415 45 86-01	Thread tension releaser	87	415 46 23-01	Adjusting link	147	415 33 05-01	Washer
33	415 45 87-01	Thread tension spring SL	88	415 46 24-01	Adjusting block shaft	148	415 30 38-01	Screw
34.1	415 45 88-01	Thread tension spring	89	415 46 25-01	Differential link shaft	149	415 48 05-01	Safety mechanism
34.2	415 45 89-01	Thread tension spring	90	415 46 26-01	Differential adjusting link	150	415 46 75-01	Upper blade driving arm shaft
35	415 45 90-01	Thread tension spring washer	91	415 46 27-01	Differential feed adjust. block	151	415 48 05-01	Movable stitch tongue assembly
36	415 45 91-01	Thread tension nut	92	415 46 28-01	Feed bar lever	152	415 46 77-01	Stitch presser
37	415 45 92-01	Washer	93	415 31 50-01	Screw	153	415 46 78-01	Stitch spring
38	415 45 93-01	Wave washer	94	415 41 31-01	Stop ring	154	415 46 79-01	Stitch tongue holder assembly
39.1	415 45 94-01	Thread tension dial (yellow)	95	415 46 29-01	Feed bar lever shaft	155	415 45 04-01	Screw
39.2	415 45 95-01	Thread tension dial (red)	96	415 32 59-01	Stop ring	156	415 46 80-01	Stitch changing knob
39.3	415 45 96-01	Thread tension dial (green)	97	415 46 30-01	Feed bar link shaft	157	415 46 81-01	Stitch plate
39.4	415 45 97-01	Thread tension dial (blue)	98	415 46 31-01	Feed bar link	158	415 46 82-01	Stop ring
40	415 33 97-01	Stop ring	99	415 46 32-01	Feed adjusting block	159	415 46 83-01	Screw
41	415 45 98-01	Tapping screw	100	415 46 33-01	Feed eccentric wheel shaft	160	415 42 09-01	Nut
41.1	415 45 97-01	Thread tension dial (blue)	101	415 46 34-01	Feed link	161	415 48 07-01	Upper blade driving arm
42	415 45 99-01	Washer	102	415 46 35-01	Feed eccentric wheel	162	415 46 85-01	Upper blade eccentric wheel
43	415 46 00-01	Dial clutch	103	415 46 36-01	Feed link shaft	163	415 43 00-01	Upper blade link
44	415 46 01-01	Clutch spring	104	415 46 37-01	Feed adjusting lever	164	415 32 56-01	Looper lever shaft bush.
45	415 41 49-01	Screw	105	415 46 38-01	Feed adjusting lever shaft	165	415 48 08-01	Horizontal lever collar
46	415 46 02-01	Thread tension release block	106	415 46 39-01	Vertical feed block	166	415 48 09-01	Horizontal lever
47	728 52 17-05	Screw	107	415 46 40-01	Differential feed bar block	167	415 48 10-01	Horizontal lever shaft
48	415 46 03-01	Thread tension release shaft C	108	415 46 43-01	Feed bar guide, left	168	415 48 11-01	Double chain loop thread ass.
49	415 46 04-01	Thread tension release plate	109	415 46 41-01	Differential feed bar	169	415 48 12-01	Double chain loop thread spring
50	415 46 05-01	Spring pin	110	415 46 42-01	Main feed bar	170	415 48 13-01	Double chain loop thread ass.
51	415 41 24-01	Presser lifter cam	111	415 46 44-01	Feed bar guide shaft	171	415 47 27-01	Tapping screw
52	415 46 06-01	Presser lifter shaft	112	415 46 45-01	Needle plate supporting collar	172	415 48 14-01	Thread guide spring presser pl.
53	415 41 26-01	Shaft presser	113	415 46 46-01	Feed bar guide, right	173	415 48 15-01	Double chain looper thread lever
54	415 45 09-01	Screw	114	415 34 73-01	Screw	174	415 48 16-01	Double chain looper
55	415 32 64-01	Stop ring	115	415 46 47-01	Feed bar shaft	175	415 42 88-01	Washer

Pos	Part no	Description	Pos	Part no	Description	Pos	Part no	Description
176	415 46	Loop lever fixing screw	236	415 47 11-01	Front cover hinge	292	415 43 95-01	Washer
177	415 48 17-01	Double chain loop	237	415 44 63-01	Front cover guide shaft	294	415 47 38-01	Rear cover assembly
178	415 42 81-01	Loop lever shaft bush., front	238	415 32 98-01	Stop ring	295	415 43 91-01	Insulation washer
179	415 48 18-01	Double chain loop shaft	239	415 32 96-01	Spring	296	415 48 61-01	Thread rectifier body assembly
180	415 48 19-01	Double chain link	240	415 44 68-01	Front cover hook	297	415 48 62-01	Spool stand base
181	415 48 20-01	Double chain driving arm	241	415 44 59-01	Screw	298	415 43 93-01	Screw
182	415 48 21-01	Double chain link shaft A	242	415 48 41-01	Blade cover 1	299	415 47 78-01	Insulation cover plate
183	415 48 22-01	Double chain rod	243	415 48 42-01	Blade cover bracket	300	415 47 79-01	PC-board
184	415 48 23-01	Double chain eccentric wheel	244	415 48 43-01	Front cover assembly (236-244)	301	415 47 80-01	Insulation cover
185	415 48 24-01	Screw	244.1	415 48 44-01	Front cover	302	415 33 15-01	Nut
186	415 48 25-01	Double chain link shaft B	244.2	415 48 45-01	Thread guide control plate	303	415 43 89-01	Nut
187	415 48 26-01	Underloop balance	244.3	415 48 46-01	Front cover plate	304	415 43 78-01	Band
188	415 42 76-01	UL rod assembly	244.3	415 48 47-01	Front cover plate	305	415 47 81-01	Jack assembly
189	415 46 87-01	Underloop rod eccentric wheel	245	415 34 33-01	Cushion A	305	415 47 82-01	Jack assembly (Germany)
190	415 44 27-01	Loop rod stud shaft	246	415 44 02-01	Spacer	306	415 47 83-01	Inlet switch assembly
191	415 48 27-01	Underloop lever shaft	247	415 45 06-01	Screw	307	415 43 80-01	Jack nut
192	415 48 28-01	Underloop lever	248	415 47 17-01	Oil pan	308	415 47 84-01	Belt cover E
193	415 48 29-01	D.chain loop thread take-up	249	415 47 18-01	Control front cover	309	415 33 28-01	Screw
194	415 48 30-01	Needle guard plate A	250	415 48 48-01	Control cover plate	310	415 43 83-01	Spring washer
195	415 48 31-01	Needle guard plate B	251	415 47 20-01	Material pl. cover hinge shaft	311	415 33 26-01	Washer
196	415 46 92-01	Underloop	252	415 47 24-01	Material plate cover R	312	415 48 68-01	Motor (230 V)
197	415 48 32-01	Underloop thread guide base	252	415 47 21-01	Material plate cover hinge	313	415 47 49-01	Dust box
198	415 42 83-01	Screw	253	415 47 22-01	Material plate front cover	314	415 47 50-01	Timing belt
199	415 48 33-01	UL thread guide slide assembly	254	415 47 23-01	Material plate cover spring	315	415 48 63-01	Blade cover 2
200	415 46 95-01	Overloop rod eccentric wheel	256	415 45 08-01	Screw	316	415 47 51-01	Panel plate sheet, left
201	415 46 96-01	Overloop balance	257	415 48 49-01	Needle plate assembly	317	415 47 89-01	LCD sheet
202	415 46 97-01	Overloop lever shaft	258	415 30 37-01	Screw	318	415 47 90-01	Lead wire assembly #1
203	415 45 16-01	Washer	259	415 47 26-01	Inner cover assembly	319	415 47 91-01	Lead wire assembly #2
204	415 32 63-01	OL guide shaft	260	415 47 28-01	Panel loop thread guide	320	415 47 92-01	Cord cover
205	415 48 34-01	Over loop	261	415 47 29-01	Overloop thread guide	321	415 47 71-01	Tapping screw
206	415 46 98-01	Screw	262	415 47 30-01	Underloop thread guide	322	415 41 67-01	Screw
207	415 46 99-01	Loop change base	263	415 48 50-01	D.chain loop thread tension	323	415 47 54-01	Screw
208	415 47 00-01	Loop change spring	264	415 33 02-01	Nut	415 34 44-01	Foot control	
209	415 47 01-01	Loop change cam	265	415 48 51-01	Screw	415 48 66-01	Power cord Europe	
210	415 47 02-01	Loop change	266	415 48 52-01	Thread tension disc	415 48 67-01	Power cord U.K.	
211	415 47 03-01	Washer	267	415 48 53-01	Thread tension disc	<b>ACCESSORIES</b>		
212	415 34 82-01	Over loop thread guide	268	415 48 54-01	Double chain spring	415 47 55-01	Accessory box without access.	
213	415 47 04-01	Overloop shaft guide	269	415 48 55-01	D.chain L. thread tension dial	415 44 06-01	Screwdriver	
214	415 48 35-01	Loop change lever	270	415 48 56-01	D.chain L. thread tension shaft	412 28 90-01	Screwdriver small	
215	415 47 05-01	Overloop shaft	271	415 48 57-01	Panel assembly(260-270,277-279)	415 44 07-01	Pincette	
216	415 30 56-01	Overloop lower shaft	272	415 47 69-01	LCD switch	415 30 13-01	Machine brush	
217	415 48 36-01	Loop change base	273	415 47 70-01	Key base assembly	415 44 10-01	Spool cap	
218	415 48 37-01	Loop change shaft	274	415 48 58-01	Take-up lever cover	415 30 15-01	Spool net	
219	415 48 38-01	Loop change knob	275	415 47 72-01	LCD base assembly	415 44 12-01	Oiler	
220	415 48 39-01	Change guide shaft	276	415 47 73-01	Insulation sheet	<b>OPTIONAL PRESSER FEET</b>		
221	415 33 98-01	Spring	277	415 47 33-01	Needle thread guide, left	415 48 64-01	Blind stitch presser foot	
222	415 44 21-01	Screw	278	415 47 34-01	Needle thread guide, right	415 47 61-01	Pearl sequence presser foot	
223	415 47 06-01	Loop thread take-up lever	279	415 47 53-01	Needle thread guide	415 47 62-01	Piping presser foot	
224	415 47 07-01	UL thread take-up lever	280	415 47 74-01	Switch knob	415 47 63-01	Elastic presser foot	
225	415 47 08-01	Screw	281	415 47 75-01	Speed control switch assembly	<b>OPERATING MANUALS</b>		
226	415 43 09-01	Handwheel	282	415 47 76-01	Switch holder	412 39 98-05	Operating manual SWE/FIN	
227	415 43 08-01	Spring pin	283	415 41 73-01	Screw	412 39 98-15	Operating manual DAN/NOR	
228	415 32 72-01	Stop ring	284	415 48 59-01	Sew-light cover assembly	412 39 98-25	Operating manual FRENCH/DUTCH	
229	415 32 71-01	Washer	285	415 43 65-01	Handle shaft	412 39 98-26	Operating manual English	
230	415 32 70-01	Driving shaft bushing, right	286	415 47 36-01	Handle	412 39 98-35	Operating manual GER/ITA	
231	415 47 09-01	Needle bar eccentric wheel	287	415 48 60-01	Spool stand assembly	<b>SERVICE TOOL</b>		
232	415 47 10-01	Driving shaft	288	415 33 23-01	Spool pin	415 48 65-01	Service gauge	
233	415 43 02-01	Needle bar rod	289	415 30 17-01	Spool cushion			
234	415 48 40-01	Driving shaft bushing, left	290	415 34 37-01	Spool stand base			
235	415 43 03-01	Needle bar rod shaft	291	415 43 94-01	Screw			