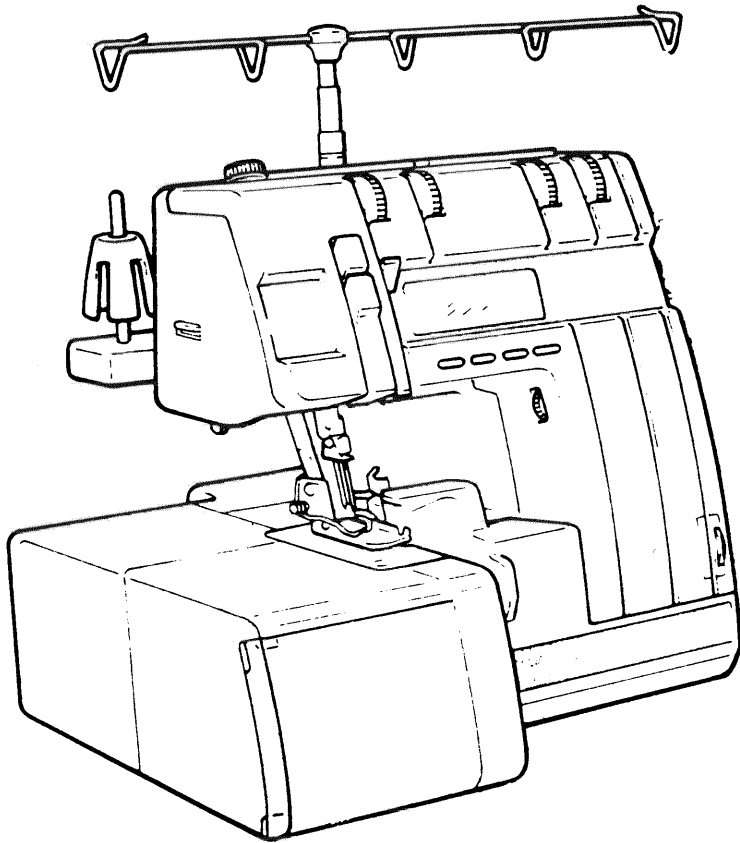
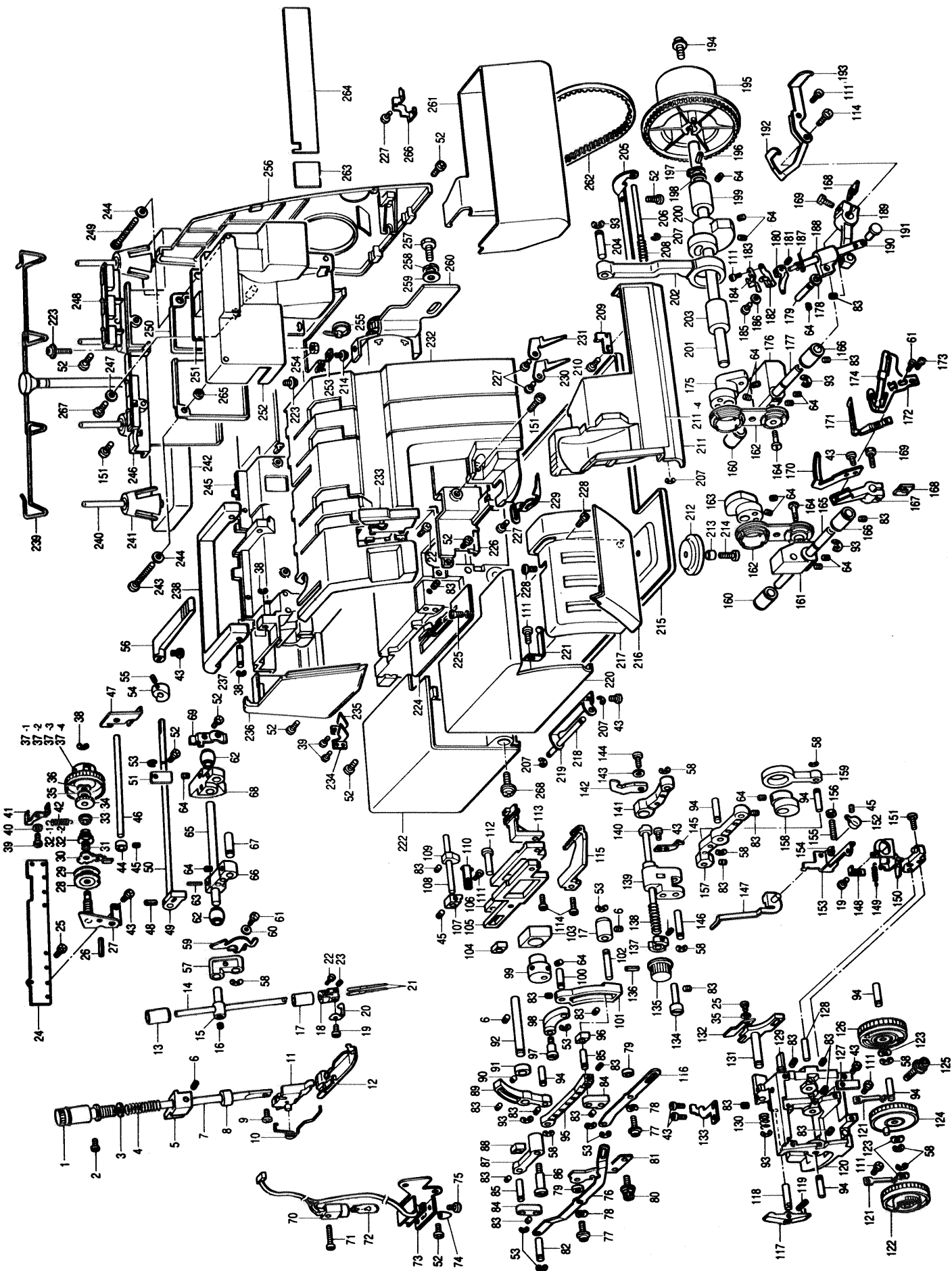


***Spare parts***  
***Ersatzteile***  
***Pièces détachées***  
***Reservdelar***



***HUSKYLOCK***  
***650 ED***



Pos	Part no	Description	Pos	Part no	Description	Pos	Part no	Description
1	415 45 68-01	Pressure adjustment dial	57	415 31 79-01	Needle bar link	117	415 46 51-01	Lower blade movable lever
2	415 45 69-01	Screw	58	415 31 87-01	Stop ring	118	415 42 38-01	Lever holder shaft
3	415 45 70-01	Washer	59	415 46 09-01	Thread take-up	119	415 42 40-01	Spring pin
4	415 45 71-01	Presser adjustment spring	60	415 30 98-01	Spring washer	120	415 46 52-01	Needle plate base
5	415 41 57-01	Presser bar bracket	61	415 41 39-01	Screw	121	415 46 53-01	Dial guide spring
6	415 41 58-01	Screw	62	415 41 30-01	Crank shaft bushing	122	415 46 54-01	Differential feed dial
7	415 41 56-01	Presser bar	63	415 46 10-01	Spring pin	123	415 46 55-01	Wave washer
8	415 41 59-01	Presser bar felt	64	415 32 03-01	Screw	124	415 46 56-01	Feed dial
9	415 30 34-01	Screw	65	415 46 11-01	Needle bar crank shaft	125	415 46 57-01	Screw
10	415 45 72-01	Presser foot spring	66	415 46 12-01	Needle bar crank	126	415 46 58-01	Lower blade dial assembly
11	415 45 73-01	Presser foot holder assembly	67	415 41 36-01	Needle bar link shaft A	127	415 46 59-01	Control front cover spring
12	415 45 74-01	Presser foot assembly	68	415 46 13-01	Needle bar driving lever	128	415 46 60-01	Stud shaft
13	415 31 81-01	Needle bar bushing	69	415 41 34-01	Upper shaft bushing presser	129	415 46 61-01	Lower blade guide shaft
14	415 45 75-01	Needle bar	70	415 46 14-01	Sew-light assembly	130	415 42 42-01	Lower blade spring
15	415 31 80-01	Needle bar connecting stud	71	415 46 15-01	Screw	131	415 46 62-01	Lower blade holder
16	415 45 76-01	Screw	72	415 34 39-01	Sew-light bulb	132	415 46 63-01	Lower blade
17	415 45 77-01	Needle bar bushing, lower	73	415 46 16-01	Sew-light plate	133	415 46 64-01	Fixed needle guard
18	415 45 78-01	Needle clamp	74	415 41 72-01	Sew-light switch cap	134	415 46 65-01	Upper blade holder guide shaft
19	415 45 79-01	Screw	75	415 41 73-01	Screw	135	415 46 66-01	Upper blade knob
20	415 45 80-01	Needle bar thread guide	76	415 46 17-01	Differential adjusting link C	136	415 46 67-01	Spring pin
21	401 60 92-01	Needles 5xNM80	77	415 44 39-01	Screw	137	415 46 68-01	Upper blade holder guide
22	415 42 69-01	Screw	78	415 45 12-01	Wave washer	138	415 46 69-01	Upper blade presser spring
23	415 45 81-01	Screw	79	415 46 19-01	Spacer	139	415 46 70-01	Upper blade driving plate
24	415 45 82-01	Thread tension bracket	80	415 46 20-01	Set screw	140	415 46 71-01	Upper blade holder
25	415 30 99-01	Screw	81	415 46 21-01	Material plate cover bracket	141	415 46 72-01	Upper blade arm
26	415 45 83-01	Spring pin	82	415 46 22-01	Adjusting link shaft	142	415 46 73-01	Upper blade
27	415 45 84-01	Thread tension base assembly	83	415 32 14-01	Screw	143	415 33 05-01	Washer
28	415 45 85-01	Thread tension disc A	84	415 46 23-01	Adjusting link	144	415 30 38-01	Screw
29	415 43 52-01	Tension disc	85	415 46 24-01	Adjusting block shaft	145	415 46 74-01	Safety mechanism
30	415 45 86-01	Thread tension releaser	86	415 46 25-01	Differential link shaft	146	415 46 75-01	Upper blade driving arm shaft
31	415 45 87-01	Thread tension spring SL	87	415 46 26-01	Differential adjusting link	147	415 46 76-01	Stitch assembly
32.1	415 45 88-01	Thread tension spring	88	415 46 27-01	Differential feed adjust. block	148	415 46 77-01	Stitch presser
32.2	415 45 89-01	Thread tension spring	89	415 46 28-01	Feed bar lever	149	415 46 78-01	Stitch spring
33	415 45 90-01	Thread tension spring washer	90	415 31 50-01	Screw	150	415 46 79-01	Stitch tongue holder assembly
34	415 45 91-01	Thread tension nut	91	415 41 31-01	Stop ring	151	415 45 04-01	Screw
35	415 45 92-01	Washer	92	415 46 29-01	Feed bar lever shaft	152	415 46 80-01	Stitch changing knob
36	415 45 93-01	Wave washer	93	415 32 59-01	Stop ring	153	415 46 81-01	Stitch plate
37.1	415 45 94-01	Thread tension dial (yellow)	94	415 46 30-01	Feed bar link shaft	154	415 46 82-01	Stop ring
37.2	415 45 95-01	Thread tension dial (red)	95	415 46 31-01	Feed bar link	155	415 46 83-01	Screw
37.3	415 45 96-01	Thread tension dial (green)	96	415 46 32-01	Feed adjusting block	156	415 42 09-01	Nut
37.4	415 45 97-01	Thread tension dial (blue)	97	415 46 33-01	Feed eccentric wheel shaft	157	415 46 84-01	Upper blade driving arm
38	415 33 97-01	Stop ring	98	415 46 34-01	Feed link	158	415 46 85-01	Upper blade eccentric wheel
39	415 45 98-01	Tapping screw	99	415 46 35-01	Feed eccentric wheel	159	415 43 00-01	Upper blade link
40	415 45 99-01	Washer	100	415 46 36-01	Feed link shaft	160	415 32 56-01	Underloop lever shaft bush.
41	415 46 00-01	Dial clutch	101	415 46 37-01	Feed adjusting lever	161	415 46 86-01	Underloop balance
42	415 46 01-01	Clutch spring	102	415 46 38-01	Feed adjusting lever shaft	162	415 42 75-01	UL rod assembly
43	415 41 49-01	Screw	103	415 46 39-01	Vertical feed block	163	415 46 87-01	Underloop rod eccentric wheel
44	415 46 02-01	Thread tension release block	104	415 46 40-01	Differential feed bar block	164	415 44 27-01	Loop rod stud shaft
45	728 52 17-05	Screw	105	415 46 41-01	Differential feed bar	165	415 46 88-01	Underloop lever shaft
46	415 46 03-01	Thread tension release shaft C	106	415 46 42-01	Main feed bar	166	415 42 81-01	Loop lever shaft bush., front
47	415 46 04-01	Thread tension release plate	107	415 46 43-01	Feed bar guide, left	167	415 46 89-01	Underloop lever
48	415 46 05-01	Spring pin	108	415 46 44-01	Feed bar guide shaft	168	415 42 88-01	Washer
49	415 41 24-01	Presser lifter cam	109	415 46 45-01	Needle plate supporting collar	169	415 46 90-01	Loop lever fixing screw
50	415 46 06-01	Presser lifter shaft	110	415 46 46-01	Feed bar guide, right	170	415 46 91-01	Needle guard plate
51	415 41 26-01	Shaft presser	111	415 34 73-01	Screw	171	415 46 92-01	Underloop
52	415 45 09-01	Screw	112	415 46 47-01	Feed bar shaft	172	415 46 93-01	Underloop thread guide base
53	415 32 64-01	Stop ring	113	415 46 48-01	Main feed dog	173	415 42 83-01	Screw
54	415 46 07-01	Tension release cam	114	415 31 23-01	Screw	174	415 46 94-01	UL thread guide slide assembly
55	415 41 22-01	Screw	115	415 46 49-01	Differential feed dog	175	415 46 95-01	Overloop rod eccentric wheel
56	415 46 08-01	Presser foot lever	116	415 46 50-01	Feed adjusting link C	176	415 46 96-01	Overloop balance

Pos	Part no	Description
177	415 46 97-01	Overlooper lever shaft
178	415 45 16-01	Washer
179	415 32 63-01	OL guide shaft
180	415 34 28-01	Over looper
181	415 46 98-01	Screw change base
182	415 46 99-01	Looper change spring
183	415 47 00-01	Looper change cam
184	415 47 01-01	Looper change cam
185	415 47 02-01	Screw
186	415 47 03-01	Washer
187	415 34 82-01	Over looper thread guide
188	415 47 04-01	Overlooper shaft guide
189	415 31 04-01	Overlooper shaft lever
190	415 47 05-01	Overlooper shaft
191	415 30 56-01	Overlooper lower shaft
192	415 47 06-01	Looper thread take-up lever
193	415 47 07-01	UL thread take-up lever
194	415 47 08-01	Screw
195	415 43 09-01	Handwheel
196	415 43 08-01	Spring pin
197	415 32 72-01	Stop ring
198	415 32 71-01	Washer
199	415 32 70-01	Driving shaft bushing, right
200	415 47 09-01	Needle bar eccentric wheel
201	415 47 10-01	Driving shaft
202	415 43 02-01	Needle bar rod
203	415 43 01-01	Driving shaft bushing, left
204	415 43 03-01	Needle bar rod shaft
205	415 47 11-01	Front cover hinge
206	415 44 63-01	Front cover guide shaft
207	415 32 98-01	Stop ring
208	415 32 96-01	Spring
209	415 44 68-01	Front cover hook
210	415 44 59-01	Screw
211	415 47 12-01	Front cover assembly (205-211)
211.1	415 47 13-01	Front cover
211.2	415 47 14-01	Blade cover
211.3	415 47 15-01	Thread guide control plate
211.4	415 47 16-01	Front cover plate
212	415 34 33-01	Cushion A
213	415 44 02-01	Spacer
214	415 45 06-01	Screw
215	415 47 17-01	Oil pan
216	415 47 18-01	Control front cover
217	415 47 19-01	Control cover plate
218	415 47 20-01	Material pi. cover hinge shaft
219	415 47 21-01	Material plate cover hinge
220	415 47 22-01	Material plate front cover
221	415 47 23-01	Material plate cover spring
222	415 47 24-01	Material plate cover B
223	415 45 08-01	Screw
224	415 47 25-01	Needle plate assembly
225	415 30 37-01	Screw
226	415 47 26-01	Inner cover assembly
227	415 47 27-01	Tapping screw
228	415 44 21-01	Screw
229	415 47 28-01	Panel looper thread guide
230	415 47 29-01	Overlooper thread guide
231	415 47 30-01	Underlooper thread guide
232	415 47 31-01	Panel assembly(229-231,234,235)

Pos	Part no	Description
233	415 47 32-01	Take-up lever cover
234	415 47 33-01	Needle thread guide, left
235	415 47 34-01	Needle thread guide, right
236	415 47 35-01	Sew-light cover assembly
237	415 43 65-01	Handle shaft
238	415 47 36-01	Handle
239	415 34 36-01	Spool stand assembly
240	415 33 23-01	Spool pin
241	415 30 17-01	Spool cushion
242	415 34 37-01	Spool stand base
243	415 43 94-01	Screw
244	415 43 95-01	Washer
246	415 47 38-01	Rear cover assembly
247	415 43 91-01	Insulation washer
248	415 47 39-01	Thread rectifier body assembly
249	415 43 93-01	Screw
250	415 47 40-01	Insulation cover plate
251	415 47 41-01	Power unit 240 V
251	415 47 42-01	Power unit 220 V
252	415 47 43-01	Insulation cover
253	415 33 15-01	Nut
254	415 43 89-01	Nut
255	415 43 78-01	Band
256	415 47 44-01	Belt cover E
257	415 33 28-01	Screw
258	415 43 83-01	Spring washer
259	415 33 26-01	Washer
260	415 47 47-01	Motor (230 V )
261	415 47 49-01	Dust box
262	415 47 50-01	Timing belt
263	415 47 51-01	Panel plate sheet, left
264	415 47 52-01	Panel plate sheet, right
265	415 44 34-01	Washer
266	415 47 53-01	Needle thread guide H
267	415 41 67-01	Screw
268	415 47 54-01	Screw
	415 47 57-01	Foot control (230V)
	415 47 58-01	Foot control (240V, U.K)

Pos	Part no	Description
415 47 55-01	Accessory box without access.	
415 44 06-01	Screwdriver	
412 28 90-01	Screwdriver small	
415 44 07-01	Pincette	
415 30 13-01	Machine brush	
415 44 10-01	Spool cap	
415 30 15-01	Spool net	
415 44 12-01	Oiler	
<b>ACCESSORIES</b>		
<b>OPTIONAL PRESSER FEET</b>		
415 47 60-01	Blind stitch presser foot	
415 47 61-01	Pearl sequence presser foot	
415 47 62-01	Piping presser foot	
415 47 63-01	Elastic presser foot	
<b>OPERATING MANUALS</b>		
412 39 98-05	Operating manual SWE/FIN	
412 39 98-15	Operating manual DAN/NOR	
412 39 98-25	Operating manual FRENCH/DUTCH	
412 39 98-26	Operating manual ENGLISH	
412 39 98-35	Operating manual GER/ITA	
<b>SERVICE TOOL</b>		
415 48 65-01	Service gauge	