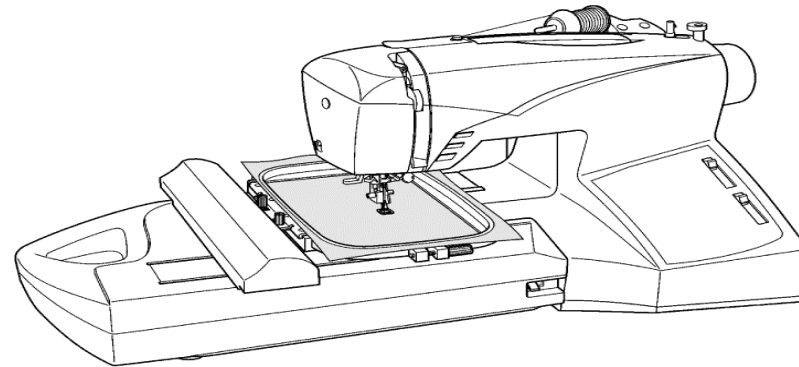


REFER TO IMPORTANT NOTICE BELOW

**PARTS LIST
FOR**

*--futura*TM *Quantum*[®] *--futura*TM
CE-100 CE-200

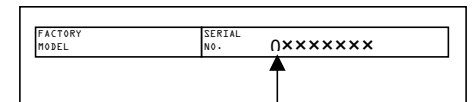


SINGER[®]
AT HOME WORLDWIDE

IMPORTANT:

WHEN ORDERING THE PARTS
ALWAYS CHECK THE SERIAL
NUMBER OF THE MACHINE.

FIRST DIGIT OF THE SERIAL
NUMBER MUST MATCH WITH
THE LAST DIGIT OF THE FACTOR
MODEL ABOVE.



FIRST DIGIT

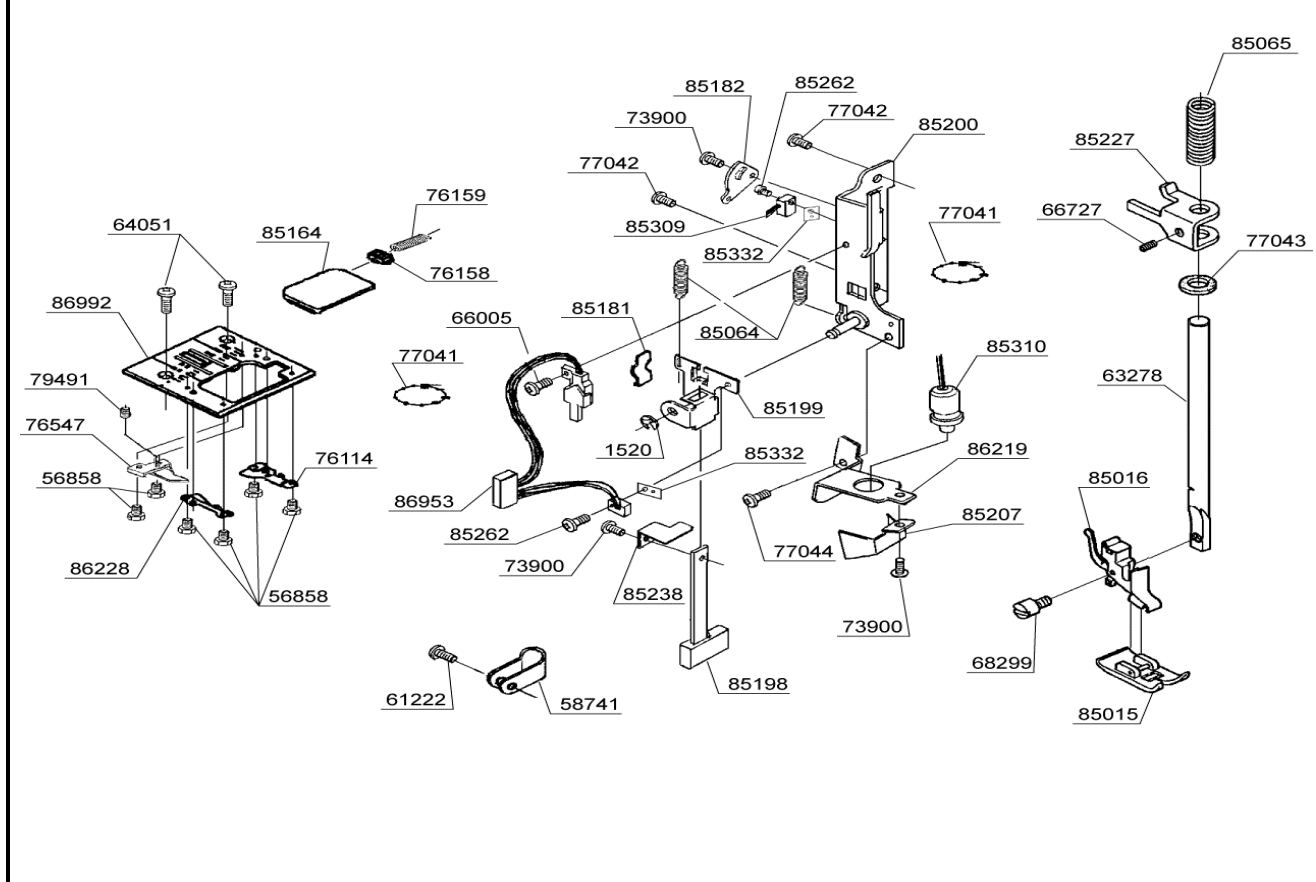
BUYER'S MODEL NO.	CE-100 , CE-200	SECTION	PAGE	REVISION	REMARKS	PART NO.	DESCRIPTION
BUYER'S MODEL NAME	CE-100 : futura		1			61227	E6 PHILLIPS SCREW
	CE-200 : Quantum futura					61341	M4 SCREW
FACTORY MODEL	CA22060 , CA22160					66124	RUBBER FOOT
ORIGINAL ISSUE	MARCH, 2004	SERIAL NO.				67533	RUBBER CUSHION
						73299	M4 TORQUE NUT
						77042	M4 PHILLIPS SCREW
						80050	TUBE
						85156	COLLAR
						86003	LEG
						86038	STUD SCREW
						86109	ACCESSORY BOX
						86110	ACC.BOX COVER B
						86111	ACC.BOX COVER A
						86117	BOTTOM COVER
						86165	INSULATION BOX
						86910	PATTERN DRAWER (FOR MODEL CE-200)
						86988	SEAL (FOR MODEL CE-200)
						86990	SECURING PLATE

BUYER'S MODEL NO.	CE-100 , CE-200	SECTION	PAGE	REVISION	REMARKS	PART NO.	DESCRIPTION
BUYER'S MODEL NAME	CE-100 : futura		2			10963	E6 CLIP-ON-WASHER
	CE-200 : Quantum futura					33223	WASHER
FACTORY MODEL	CA22060 , CA22160					43389	THRUST WASHER
ORIGINAL ISSUE	MARCH. 2004	SERIAL NO.				43930	SPRING PIN
						53403	WASHER
						61224	M4 PHILLIPS SCREW
						66235	SECURING PLATE
						66437	BUSH
						66725	M4 SCREW
						66727	M4 SCREW
						66787	WASHER
						67447	M5 SCREW
						68152	BALL BUSH
						68891	WASHER
						73371	M6 SCREW
						73434	M4 PHILLIPS SCREW
						73471	FEED REGULATING CAM
						73472	COLLAR
						75047	CLUTCH
						75060	TAKE-UP LEVER CRANK
						75066	NEEDLE BAR CRANK
						75194	TORSION SPRING
						75207	CS-CLIP
						77035	M4 PHILLIPS SCREW
85003	BELT PULLEY						
85013	POSITIONING COLLAR						
85017	BLANCER						
85047	COLLAR						
85048	COLLAR						
85103	BELT PULLEY						
85138	TENSION ROLLER						
85178	WASHER						
85184	LEAF SPRING						
85189	TENSION ROLLER PLATE						
85217	RETAINER						
85253	WASHER						
85403	TIMING BELT						
86006	CRANK SHAFT						
86007	SHAFT						
86008	TAKE-UP LEVER						
86030	MAIN SHAFT						
86130	SENSOR CAM						
86156	PULLEY CAP						
86169	HAND WHEEL						

BUYER'S MODEL NO.	CE-100 , CE-200	SECTION	PAGE	REVISION	REMARKS	PART NO.	DESCRIPTION
BUYER'S MODEL NAME	CE-100 : futura		3			1520	E3 CLIP-ON-WASHER
	CE-200 : Quantum futura					1939	RUBBER RING
FACTORY MODEL	CA22060 , CA22160					10963	E6 CLIP-ON-WASHER
ORIGINAL ISSUE	MARCH, 2004	SERIAL NO.				39542	CLIP-ON-WASHER
						42359	CRINKLE WASHER
						58220	WASHER
						58741	CORD GUARD
						61224	M4 PHILLIPS SCREW
						68332	EXTENSION SPRING
						73900	M3 SCREW
						75130	RATCHET A
						75131	RATCHET B
						75163	M4 STUD SCREW
						75183	M4 STUD SCREW
						75196	TORSION SPRING
						75226	SQUARE NUT
						76317	M3 PHILLIPS SCREW
						77041	UNIT Y FASTENER
						77042	M4 PHILLIPS SCREW
						77044	M3 PHILLIPS SCREW
						79505	THREAD REGULATE PLATE
						85071	SHAFT#8
						85102	PROTECTION SHEET
						85135	END CAP
						85174	COVER
						85175	COVER
						85221	ABUTMENT LEVER
						85268	SENSOR BRACKET
						85270	COIL SPRING
						85274	M2 SCREW
						85355	SENSOR HARNESS
						86140	SENSOR WHEEL
86212	ENCODER FIXING PLATE						
86236	BASE PLATE						
86263	MAIN SHAFT SENSOR HARNESS						
86916	TENSION SENSOR COVER						
86917	BRUSH						
86925	THREAD PLATE						
86926	SECURING PLATE						
86927	SECURING PLATE						
86928	BOBBIN WINDER COMPLETE						
86929	BOBBIN WINDER BASE						
86930	BOBBIN WINDER SHAFT						
86954	THREAD SENSOR						
86997	THREAD GUIDE PLATE						
86999	SPRING						
87007	THREAD GUIDE						
87018	BRUSH						

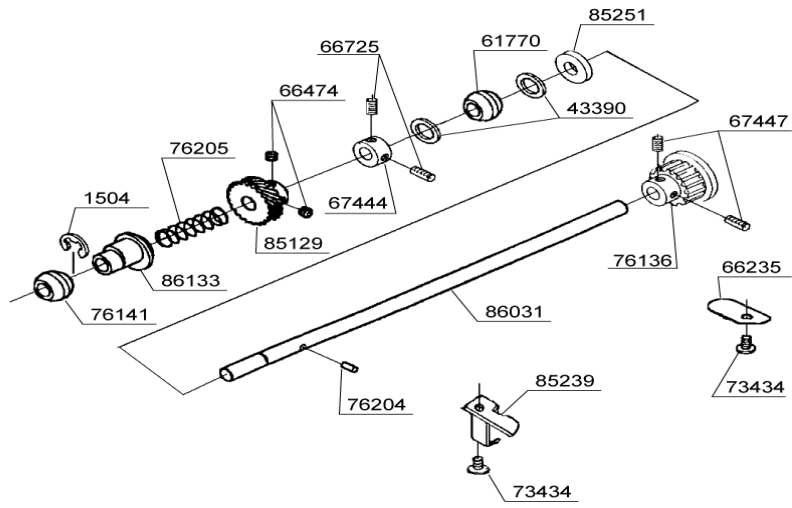
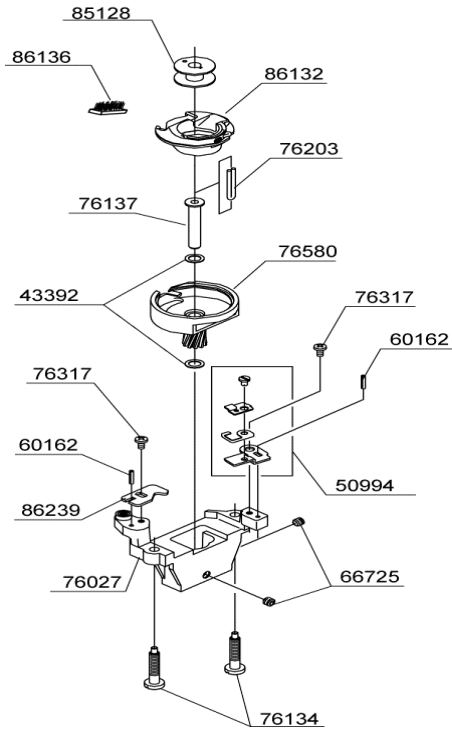
BUYER'S MODEL NO.	CE-100 , CE-200	SECTION	PAGE	REVISION	REMARKS	PART NO.	DESCRIPTION
BUYER'S MODEL NAME	CE-100 : futura		4			1513	E4 CLIP-ON-WASHER
	CE-200 : Quantum futura					1520	E3 CLIP-ON-WASHER
FACTORY MODEL	CA22060 , CA22160					8058	NEEDLE CLAMP SCREW
ORIGINAL ISSUE	MARCH, 2004	SERIAL NO.				26934	#8 SCREW
						43392	THRUST WASHER
						43393	WASHER
						61222	M4 PHILLIPS SCREW
						64653	M3 SCREW
						65818	M4 BOLT
						66052	M4 SCREW
						66725	M4 SCREW
						67232	NEEDLE
						73434	M4 PHILLIPS SCREW
						73900	M3 SCREW
						75128	SECURING PLATE
						75206	SPOOL PIN
						77037	NEEDLE BAR CLAMP
						77042	M4 PHILLIPS SCREW
						77044	M3 PHILLIPS SCREW
						80003	NEEDLE CLAMP SET
						85005	NEEDLE BAR SUPPORT
						85014	FULCRUM BLOCK
						85041	NEEDLE BAR
						85043	HEADED PIN
85045	PIN						
85050	ECCENTRIC						
85058	COLLAR						
85059	EXTENSION SPRING						
85060	COMPRESSION SPRING						
85061	SPRING PIN						
85062	THREADER SHAFT SET						
85075	SPRING PIN						
85152	LEVER						
85158	COLLAR						
85206	SUPPORT						
85208	PLATE						
85209	SUPPORT PLATE						
85235	STOPPER						
85245	LEFT SPRING						
86046	THREAD GUIDE						
86211	THREAD GUIDE PLATE						
86216	COVER MOUNTING PLATE						
86246	SUPPORT PLATE						
87008	WIRE SPRING						
87010	THREADER ASSEMBLY						

BUYER'S MODEL NO.	CE-100 , CE-200	SECTION	PAGE	REVISION	REMARKS	PART NO.	DESCRIPTION
BUYER'S MODEL NAME	CE-100 : futura		5			1520	E3 CLIP-ON-WASHER
FACTORY MODEL	CE-200 : Quantum futura						56858
ORIGINAL ISSUE	CA22060 , CA22160	SERIAL NO.				58741	CORD GUARD
	MARCH, 2004					61222	M4 PHILLIPS SCREW



1520	E3 CLIP-ON-WASHER
56858	M2 PHILLIPS SCREW
58741	CORD GUARD
61222	M4 PHILLIPS SCREW
63278	PRESSER BAR
64051	M4 SCREW
66005	M2 PHILLIPS SCREW
66727	M4 SCREW
68299	#7 SCREW FOR SHANK
73900	M3 SCREW
76114	COVER GUIDE (R)
76158	RELEASE LEVER
76159	COMPRESSION LEVER
76547	THREAD CONTROL PLATE
77041	UNITY FASTENER
77042	M4 PHILLIPS SCREW
77043	FELT
77044	M3 PHILLIPS SCREW
79491	SET SCREW
85015	ZIGZAG PRESSER FOOT
85016	PRESSER FOOT HOLDER
85064	EXTENSION SPRING
85065	COMPRESSION SPRING
85164	SHUTTLE RACE COVER
85181	LEAF SPRING
85182	CONTROL PLATE
85198	BH PLATE (A)
85199	BH PLATE (B)
85200	PRESSER BAR MOUNTING PLATE
85207	REFLECTING PLATE
85227	PRESSER BAR BLOCK
85238	BH PLATE (C)
85262	M2 SCREW
85309	MINI SWITCH
85310	LAMP
85332	SPACER
86219	LAMP BASE PLATE
86228	COVER GUIDE (L)
86953	BH LEVER SWITCH
86992	NEEDLE PLATE

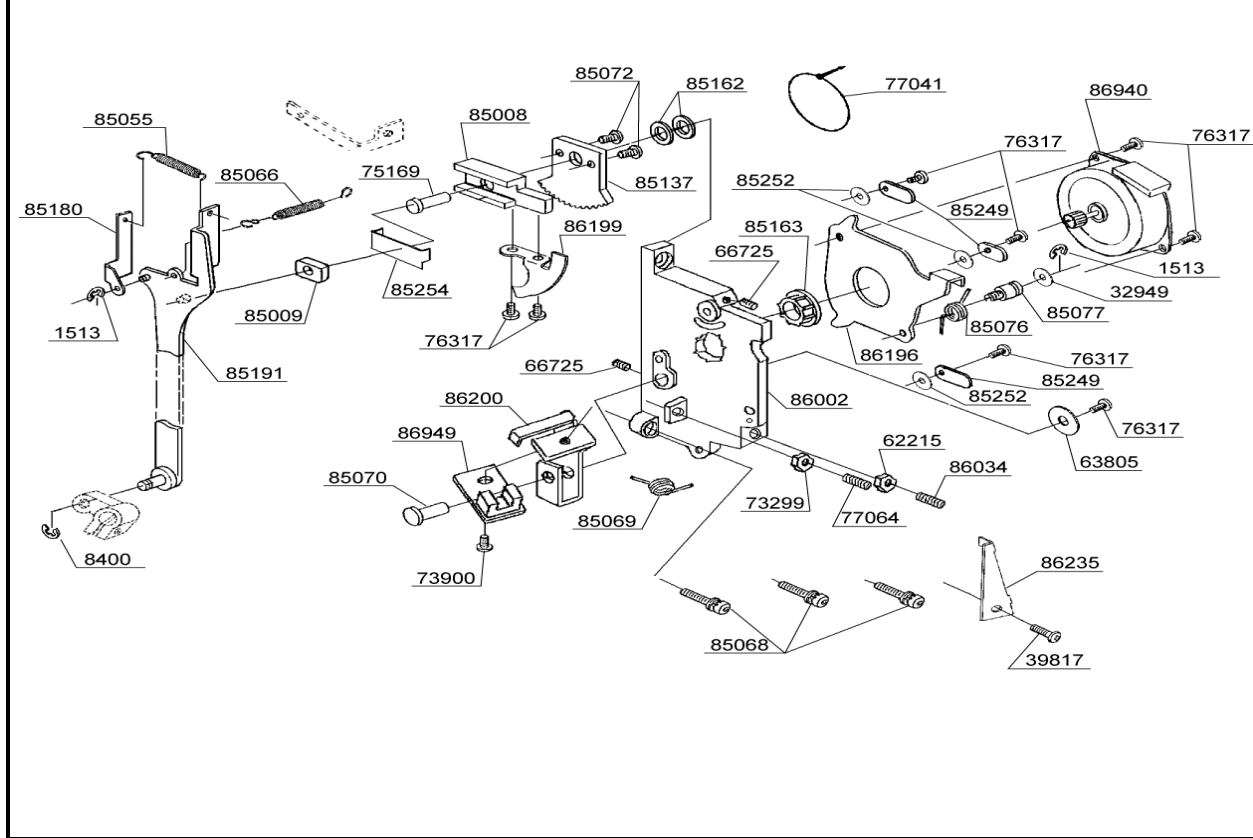
BUYER'S MODEL NO.	CE-100 , CE-200	SECTION	PAGE	REVISION	REMARKS	PART NO.	DESCRIPTION
BUYER'S MODEL NAME	CE-100 : futura		7			1504	E7 CLIP-ON-WASHER
	CE-200 : Quantum futura					43390	THRUST WASHER
FACTORY MODEL	CA22060 , CA22160					43392	THRUST WASHER
ORIGINAL ISSUE	MARCH, 2004	SERIAL NO.				50994	RETAINER SET



PART NO.	DESCRIPTION
1504	E7 CLIP-ON-WASHER
43390	THRUST WASHER
43392	THRUST WASHER
50994	RETAINER SET
60162	KNOCK PIN
61770	BALL BUSHING
66235	SECURING PLATE
66474	M5 SCREW
66725	M4 SCREW
67444	COLLAR
67447	M5 SCREW
73434	M4 PHILLIPS SCREW
76027	SHUTTLE RACE BASE
76134	SCREW
76136	BELT METAL
76137	SHUTTLE RACE SHAFT
76141	BALL BUSHING
76203	OILING CORD
76204	PIN
76205	TORSION SPRING
76317	M3 PHILLIPS SCREW
76580	SHUTTLE RACE
85128	BOBBIN
85129	BEVEL GEAR
85239	SECURING PLATE
86031	WASHER
86132	LOWER SHAFT
86133	BOBBIN CASE
86136	FEED LIFTING CAM
86136	BRUSH
86239	BOBBIN CASE STOPPER

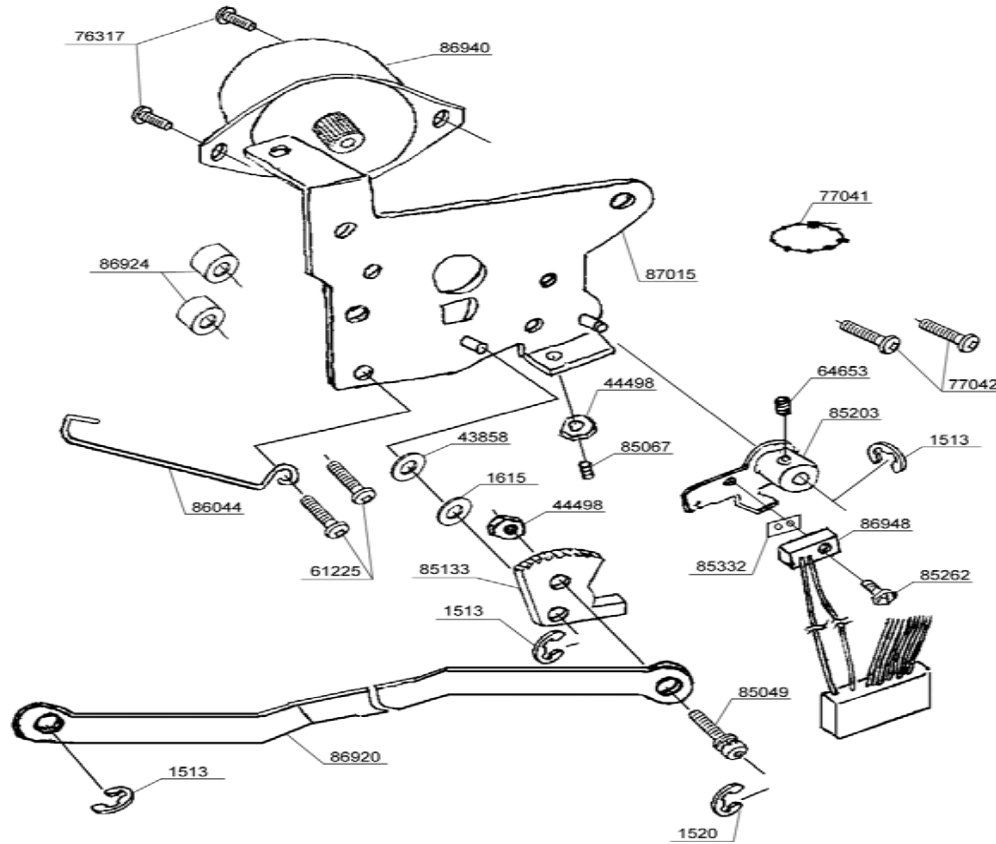
BUYER'S MODEL NO.	CE-100 , CE-200	SECTION	PAGE	REVISION	REMARKS	PART NO.	DESCRIPTION
BUYER'S MODEL NAME	CE-100 : futura		8			32949	WASHER
	CE-200 : Quantum futura					37515	WASHER
FACTORY MODEL	CA22060 , CA22160					39817	M4 PHILLIPS SCREW
ORIGINAL ISSUE	MARCH, 2004	SERIAL NO.				43390	THRUST WASHER
						43858	WASHER
						61381	CRINKLE WASHER
						61770	BALL BUSHING
						64653	M3 SCREW
						66235	SECURING PLATE
						66481	M4 STUD SCREW
						66725	M2 SCREW
						67444	COLLAR
						72791	M4 SCREW
						72826	EXTENSION SPRING
						73299	M4 TORQUE NUT
						73434	M2 PHILLIPS SCREW
						76025	FEED DOG BASE
						76104	FEED DOGS
						76122	FEED BASE ADJUSTMENT
						76125	SPRING HOOK PLATE
						76141	BALL BUSHING
						76324	M4 SCREW
						77035	M4 PHILLIPS SCREW
						77042	M4 PHILLIPS SCREW
85052	PIN W / HEAD						
85192	FEED DOG BASE BRACKET						
85247	SECURING PLATE						
86004	FEED REGULATING ARM						
86032	HORIZONTAL FEED SHAFT						

BUYER'S MODEL NO.	CE-100 . CE-200	SECTION	PAGE	REVISION	REMARKS	PART NO.	DESCRIPTION
BUYER'S MODEL NAME	CE-100 : futura		9			1513	E4 CLIP-ON-WASHER
FACTORY MODEL	CE-200 : Quantum futura					8400	E5 CLIP-ON-WASHER
ORIGINAL ISSUE	CA22060 . CA22160					32949	WASHER
	MARCH 2004		SERIAL NO.			39817	M4 PHILLIPS SCREW



PART NO.	DESCRIPTION
1513	E4 CLIP-ON-WASHER
8400	E5 CLIP-ON-WASHER
32949	WASHER
39817	M4 PHILLIPS SCREW
62215	M4 NUT
63805	WASHER
66725	M4 SCREW
73299	M4 TORQUE NUT
73900	M3 SCREW
75169	HEADED PIN
76317	M3 PHILLIPS SCREW
77041	UNITY FASTENER
77064	M4 SCREW
85008	FEED CONTROL REGULATOR
85009	SLIDE BLOCK
85055	EXTENSION SPRING
85068	EXTENSION SPRING
85068	CAP-BOLT
85069	SPRING
85070	PIN W / HEAD
85072	M3 SCREW
85076	TORSION SPRING
85077	SCREW W / SHAFT
85137	FEED CONTROL GEAR
85163	WASHER
85180	RING
85180	PLATE
85191	FEED CONTROL ROD
85249	SECURING PLATE
85249	WASHER
85254	PLATE
86002	MOUNTING BRACKET
86034	M4 SCREW
86196	MOTOR BRACKET
86199	SENSOR PLATE
86200	FEED SENSOR BRACKET
86235	SECURING PLATE
86940	STEP MOTOR
86949	PLATE

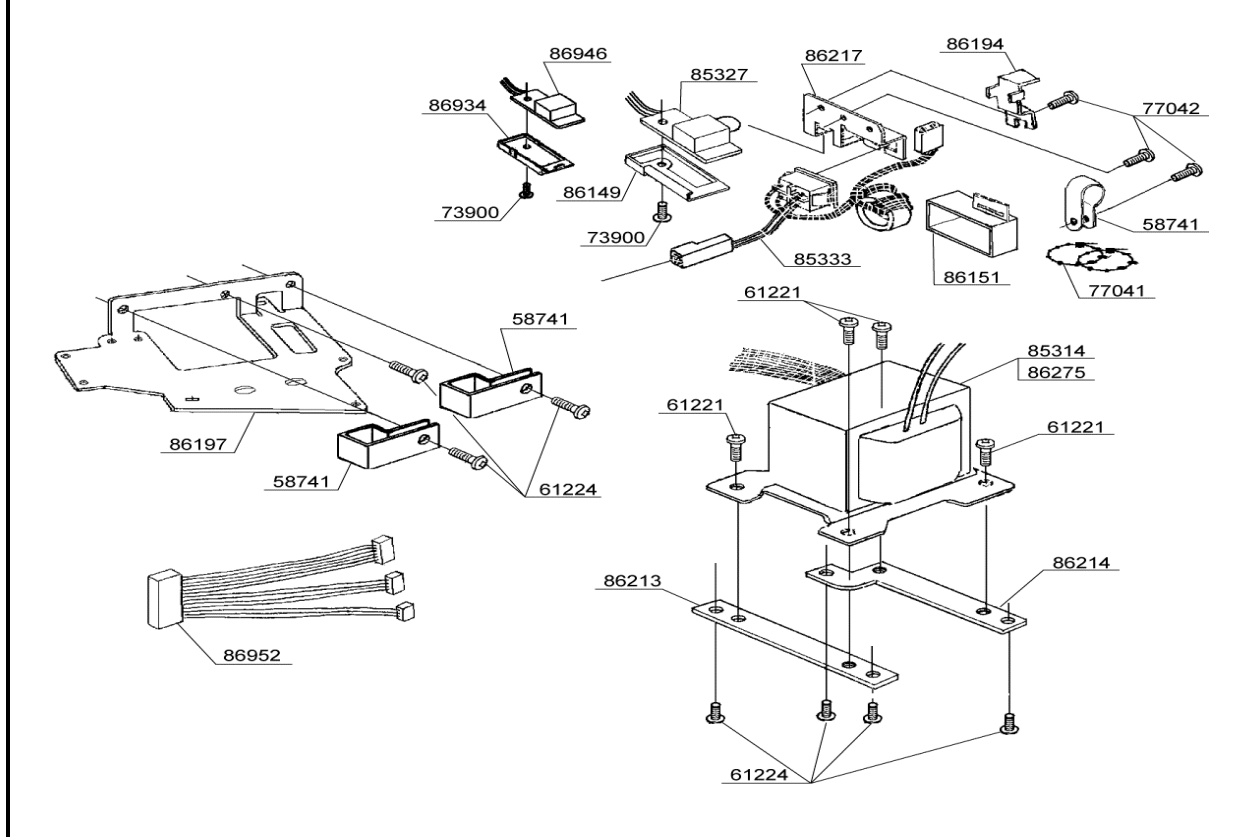
BUYER'S MODEL NO.	CE-100 , CE-200	SECTION	PAGE	REVISION	REMARKS	PART NO.	DESCRIPTION
BUYER'S MODEL NAME	CE-100 : futura		10			1513	E4 CLIP-ON-WASHER
	CE-200 : Quantum futura					1520	E3 CLIP-ON-WASHER
FACTORY MODEL	CA22060 , CA22160					1615	WASHER
ORIGINAL ISSUE	MARCH, 2004		SERIAL NO.			43858	WASHER



PART NO.	DESCRIPTION
1513	E4 CLIP-ON-WASHER
1520	E3 CLIP-ON-WASHER
1615	WASHER
43858	WASHER
44498	M3 NUT
61225	M4 PHILLIPS SCREW
64653	M3 SCREW
76317	M3 PHILLIPS SCREW
77041	UNITY FASTENER
77042	M4 PHILLIPS SCREW
85049	STUD SCREW
85067	M3 SCREW
85133	ZIGZAG DRIVE GEAR
85203	SENSOR SUPPORT LEVER
85262	M2 SCREW
85332	SPACER
86044	WIRE SPRING
86920	ZIGZAG CONNECTING ROD
86924	SPACER
86940	STEP MOTOR
86948	SENSOR UNIT
87015	MOTOR BRACKET

BUYER'S MODEL NO.	CE-100 , CE-200	SECTION	PAGE	REVISION	REMARKS
BUYER'S MODEL NAME	CE-100 : futura		11		
	CE-200 : Quantum futura				
FACTORY MODEL	CA22060 , CA22160				
ORIGINAL ISSUE	MARCH 2004	SERIAL NO.			

PART NO.	DESCRIPTION
58741	CORD GUARD
61221	M4 PHILLIPS SCREW
61224	M4 PHILLIPS SCREW
73900	M3 SCREW
77041	UNITY FASTENER
77042	M4 PHILLIPS SCREW
85314	TRANSFORMER (120V)
85327	F.C.JACK HARNESS
85333	SWITCH HARNESS
86149	JACK COVER
86151	SWITCH COVER
86194	SECURING PLATE
86197	CORD BRACKET
86213	BRACKET A
86214	BRACKET B
86217	SWITCH BRACKET
86275	TRANSFORMER (230V)
86934	USB INSULATION COVER
86946	USB HARNESS
86952	CONNECTING HARNESS

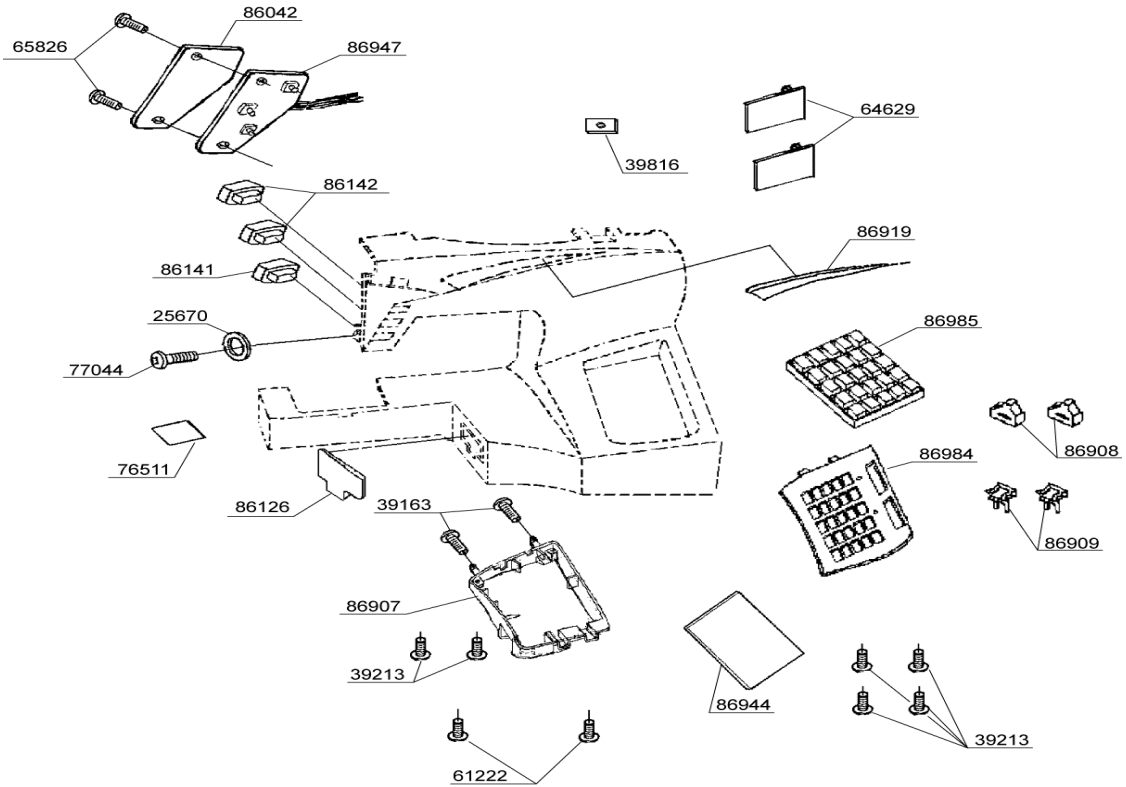


BUYER'S MODEL NO.	CE-100 , CE-200	SECTION	PAGE	REVISION	REMARKS	PART NO.	DESCRIPTION
BUYER'S MODEL NAME	CE-100 : futura		12			1424	WASHER
	CE-200 : Quantum futura					1520	E3 CLIP-ON-WASHER
FACTORY MODEL	CA22060 , CA22160					8400	E5 CLIP-ON-WASHER
ORIGINAL ISSUE	MARCH, 2004	SERIAL NO.				8466	WASHER
						35818	WASHER
						37515	WASHER
						39163	TAPPING SCREW
						43392	THRUST WASHER
						61224	M4 PHILLIPS SCREW
						63560	M4 PHILLIPS SCREW
						65818	M4 BOLT
						73900	M3 SCREW
						77041	UNITY FASTENER
						77042	M4 PHILLIPS SCREW
						85074	M3 SCREW
						85126	IDLER PULLEY
						85130	MOTOR PULLEY
						85132	ENCODER
						85188	IDLER PULLEY BRACKET
						85257	RUBBER STOPPER
						85259	RUBBER CUSHION
						85263	M3 SCREW
						85274	M2 SCREW
						85302	MOTOR
						85318	FERRITE RING
						85400	BELT (L)
						86166	C.B. CONTAINER
						86201	MOTOR BRACKET
						86204	STOPPER
						86218	BOARD BRACKET
						86262	HARNESS (A)
						86270	CONNECTOR
86279	BELT (S)						
86310	MAIN CIRCUIT BOARD						
86922	SWITCH BRACKET						
86923	CONNECTOR BRACKET						
86945	JUMPER HARNESS						
86955	SWITCH HARNESS						

BUYER'S MODEL NO.	CE-100 , CE-200	SECTION	PAGE	REVISION	REMARKS	PART NO.	DESCRIPTION
BUYER'S MODEL NAME	CE-100 : futura		13			1513	E4 CLIP-ON WASHER
	CE-200 : Quantum futura					61222	M4 PHILLIPS SCREW
FACTORY MODEL	CA22060 , CA22160					61224	M4 PHILLIPS SCREW
ORIGINAL ISSUE	MARCH, 2004	SERIAL NO.				61225	M4 PHILLIPS SCREW
<p>The diagram shows an exploded view of a washing machine assembly. Key components include: <ul style="list-style-type: none"> Top Housing: 86137 (top cover), 86047 (top panel), 86354 (top panel insert), 85420 (seal), 86938 (top housing), 86918 (knob), 86115 (drop knob). Internal Mechanism: 86172 (blade), 86033 (shaft), 86035 (shaft), 1513 (clip-on washers), 86251 (slide link), 86033 (slide link), 86252 (slide link), 86249 (slide link), 67394 (slide link). Bottom Housing: 86163 (bottom cover), 86127 (handle), 86247 (limiting plate), 86249 (handle base cover), 86250 (handle bracket). Accessories: 68443 (blade), 74795 (tapping screw), 86158 (seal), 64360 (toothed washer), 86137 (brush), 86158 (bobbin winder latch), 86163 (bottom cover), 86172 (handle), 86247 (limiting plate), 86249 (handle base cover), 86250 (handle bracket), 86251 (slide link left), 86252 (slide link right), 86354 (reflecting sheet), 86918 (cap), 86938 (face cover), 86982 (roof cover). </p>						67394	M5 PHILLIPS SCREW
						68443	BLADE
						74795	TAPPING SCREW
						85420	SEAL
						86033	SHAFT
						86035	SHAFT
						86047	CLIP
						86115	DROP KNOB
						86127	HANDLE GUIDE
						86137	BRUSH
						86158	BOBBIN WINDER LATCH
						86163	BOTTOM COVER
						86172	HANDLE
						86247	LIMITING PLATE
						86249	HANDLE BASE COVER
						86250	HANDLE BRACKET
						86251	SLIDE LINK (LEFT)
						86252	SLIDE LINK (RIGHT)
						86354	REFLECTING SHEET
						86918	CAP
86938	FACE COVER						
86982	ROOF COVER						

BUYER'S MODEL NO.	CE-100	SECTION	PAGE	REVISION	REMARKS	PART NO.	DESCRIPTION
BUYER'S MODEL NAME	CE-100 : futura		14-1			25670	WASHER
FACTORY MODEL	CA22060					39163	TAPPING SCREW
ORIGINAL ISSUE	MARCH. 2004	SERIAL NO.				39213	M3 SCREW

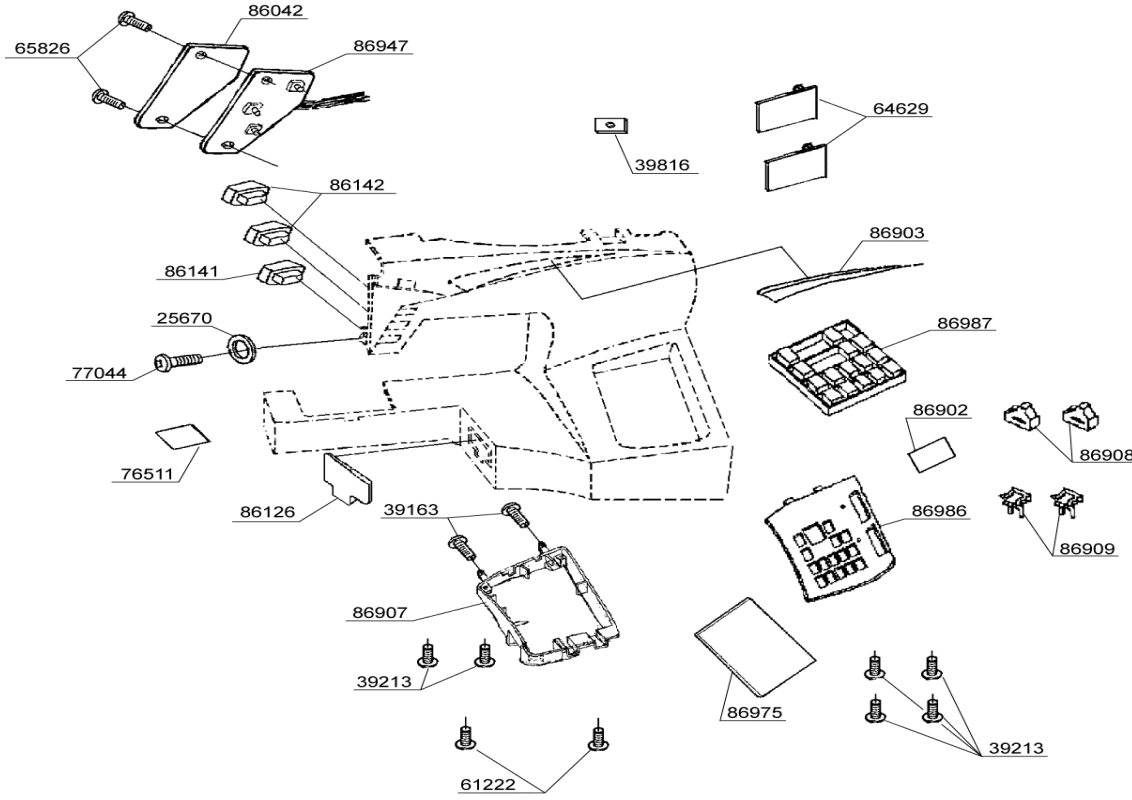
CE-100



PART NO.	DESCRIPTION
25670	WASHER
39163	TAPPING SCREW
39213	M3 SCREW
39816	M4 SQUARE NUT
61222	M4 PHILLIPS SCREW
64629	CORD GUIDE
65826	M3 SCREW
76511	SEAL
77044	M3 PHILLIPS SCREW
86042	INSULATION SHEET
86126	CONNECTOR CAP
86141	BUTTON (A)
86142	BUTTON (B)
86907	CIRCUIT BOARD HOLDER
86908	SPEED CONTROL KNOB
86909	SPEED CONTROL HOLDER
86919	PANEL
86944	CIRCUIT BOARD
86947	SS SWITCH HARNESS
86984	CONTROL PANEL
86985	PATTERN SWITCH

BUYER'S MODEL NO.	CE-200	SECTION	PAGE	REVISION	REMARKS	PART NO.	DESCRIPTION
BUYER'S MODEL NAME	CE-200 : Quantum futura		14-2			25670	WASHER
FACTORY MODEL	CA22160					39163	TAPPING SCREW
ORIGINAL ISSUE	MARCH. 2004	SERIAL NO.				39213	M3 SCREW

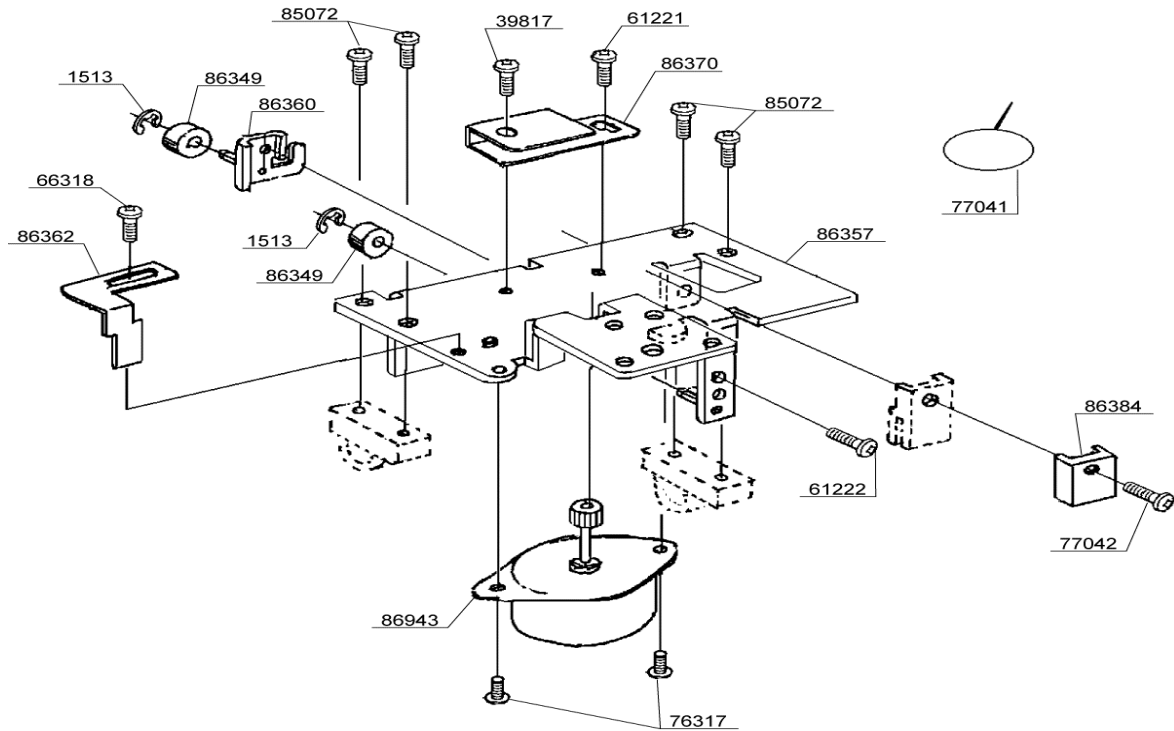
CE-200



25670	WASHER
39163	TAPPING SCREW
39213	M3 SCREW
39816	M4 SQUARE NUT
61222	M4 PHILLIPS SCREW
64629	CORD GUIDE
65826	M3 SCREW
76511	SEAL
77044	M3 PHILLIPS SCREW
86042	INSULATION SHEET
86126	CONNECTOR CAP
86141	BUTTON (A)
86142	BUTTON (B)
86902	INDICATOR WINDOW
86903	PANEL
86907	CIRCUIT BOARD HOLDER
86908	SPEED CONTROL KNOB
86909	SPEED CONTROL HOLDER
86947	SWITCH HARNESS
86975	CIRCUIT BOARD
86986	CONTROL PANEL
86987	PATTERN SWITCH

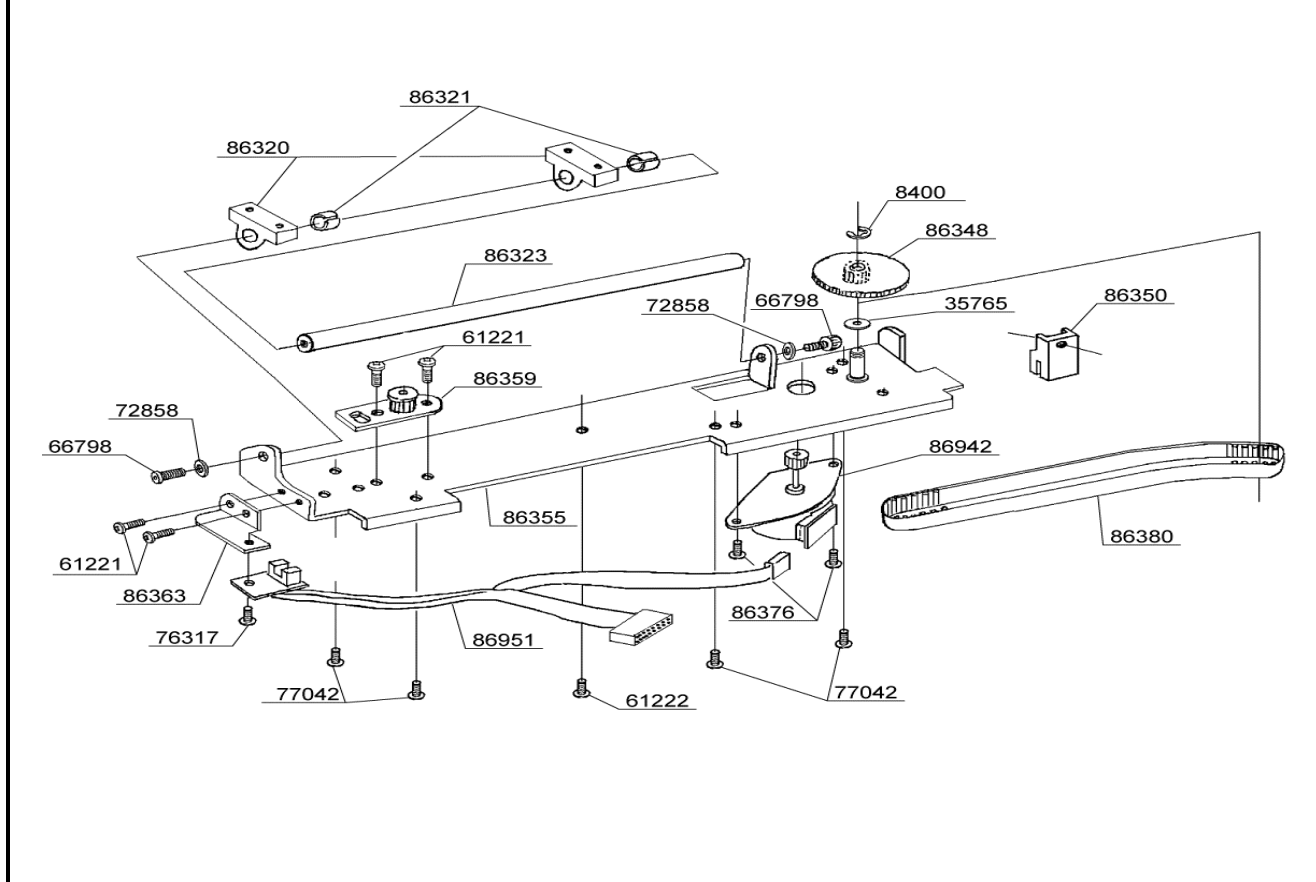
BUYER'S MODEL NO.	CE-100 , CE-200	SECTION	PAGE	REVISION	REMARKS	PART NO.	DESCRIPTION
BUYER'S MODEL NAME	CE-100 : futura		16			8400	E5 CLIP-ON-WASHER
	CE-200 : Quantum futura					39213	M3 SCREW
FACTORY MODEL	CA90560					47181	TAPPING SCREW
ORIGINAL ISSUE	MARCH, 2004	SERIAL NO.				58220	WASHER
						60594	RUBBER FOOT
						64629	CORD GUIDE
						73926	SPACER
						77042	M4 PHILLIPS SCREW
						86303	CONNECTOR
						86305	HARNESS
						86311	CIRCUIT BOARD
						86317	SUPPORTING PLATE
						86329	TORSION SPRING
						86346	BOARD COVER
						87004	RELEASE LEVER

BUYER'S MODEL NO.	CE-100 , CE-200	SECTION	PAGE	REVISION	REMARKS	PART NO.	DESCRIPTION
BUYER'S MODEL NAME	CE-100 : futura		17			1513	E4 CLIP-ON-WASHER
FACTORY MODEL	CE-200 : Quantum futura					39817	M4 PHILLIPS SCREW
ORIGINAL ISSUE	CA90560					61221	M4 PHILLIPS SCREW
	MARCH, 2004	SERIAL NO.				61222	M4 PHILLIPS SCREW



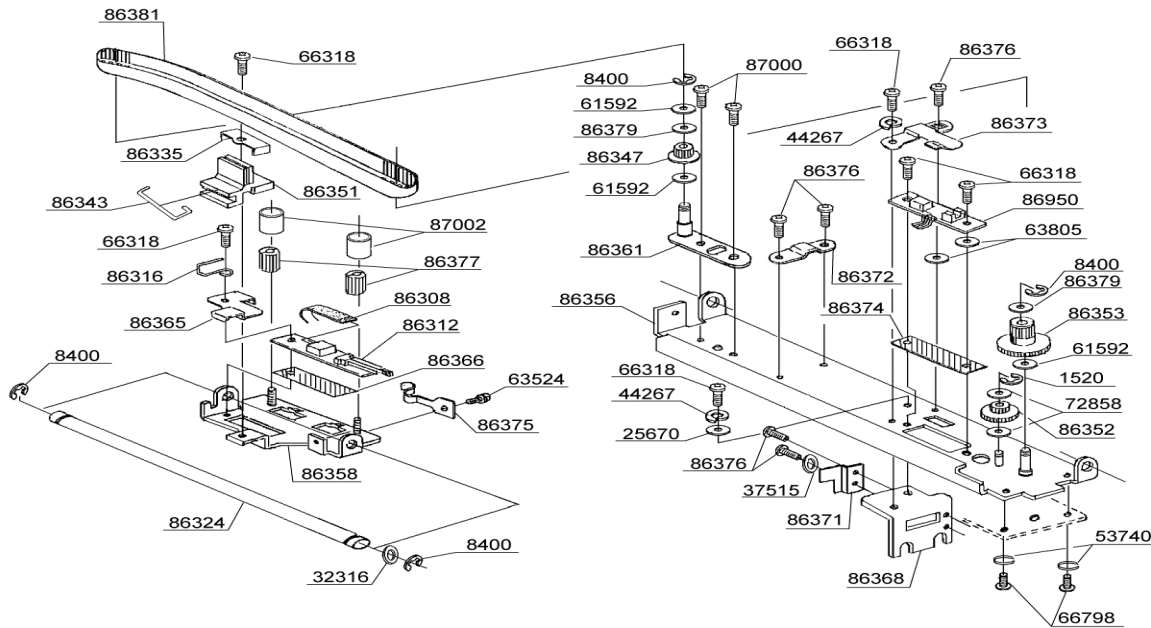
PART NO.	DESCRIPTION
1513	E4 CLIP-ON-WASHER
39817	M4 PHILLIPS SCREW
61221	M4 PHILLIPS SCREW
61222	M4 PHILLIPS SCREW
66318	M3 SCREW
76317	M3 PHILLIPS SCREW
77041	UNITY FASTENER
77042	M4 PHILLIPS SCREW
85072	M3 SCREW
86349	GUIDE ROLLER
86357	X MOVING PLATE
86360	GUIDE ROLLER BASE
86362	X SENSOR PLATE
86370	CORD GUIDE (A)
86384	PROTECTION PLATE
86943	STEP MOTOR

BUYER'S MODEL NO.	CE-100 , CE-200	SECTION	PAGE	REVISION	REMARKS	PART NO.	DESCRIPTION
BUYER'S MODEL NAME	CE-100 : futura		18			8400	E5 CLIP-ON-WASHER
FACTORY MODEL	CE-200 : Quantum futura					35765	WASHER
ORIGINAL ISSUE	CA90560					61221	M4 PHILLIPS SCREW
	MARCH, 2004	SERIAL NO.				61222	M4 PHILLIPS SCREW



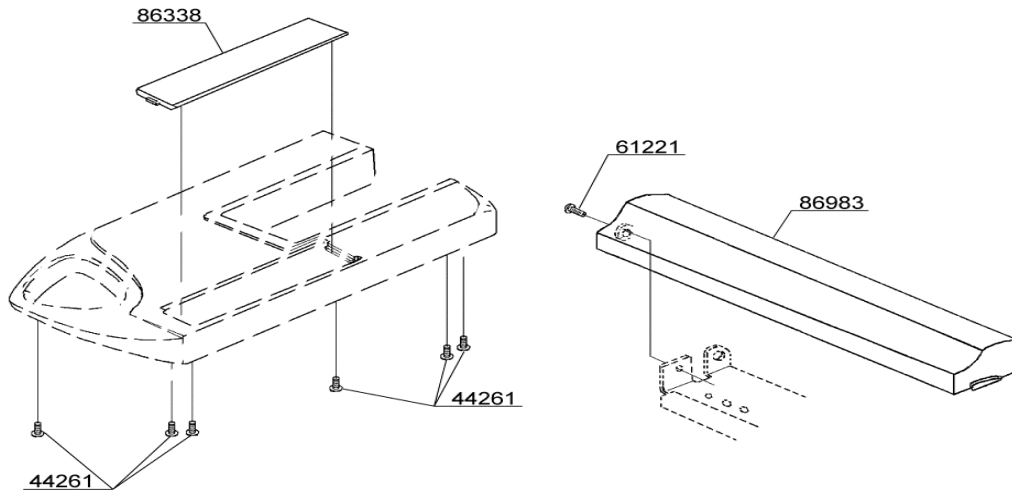
PART NO.	DESCRIPTION
8400	E5 CLIP-ON-WASHER
35765	WASHER
61221	M4 PHILLIPS SCREW
61222	M4 PHILLIPS SCREW
66798	M4 SCREW
72858	WASHER
76317	M3 PHILLIPS SCREW
77042	M4 PHILLIPS SCREW
86320	BEARING SUPPORT
86321	COLLAR
86323	SHAFT
86348	T PULLEY & GEAR (X)
86350	BELT HOLDER
86355	X BASE
86359	T PULLEY BASE (X)
86363	SENSOR FIXING PLATE
86376	M3 SCREW
86380	TIMING BELT (X)
86942	STEP MOTOR
86951	HARNESS

BUYER'S MODEL NO.	CE-100, CE-200	SECTION	PAGE	REVISION	REMARKS
BUYER'S MODEL NAME	CE-100 : futura		19		
	CE-200 : Quantum futura				
FACTORY MODEL	CA90560				
ORIGINAL ISSUE	MARCH, 2004	SERIAL NO.			

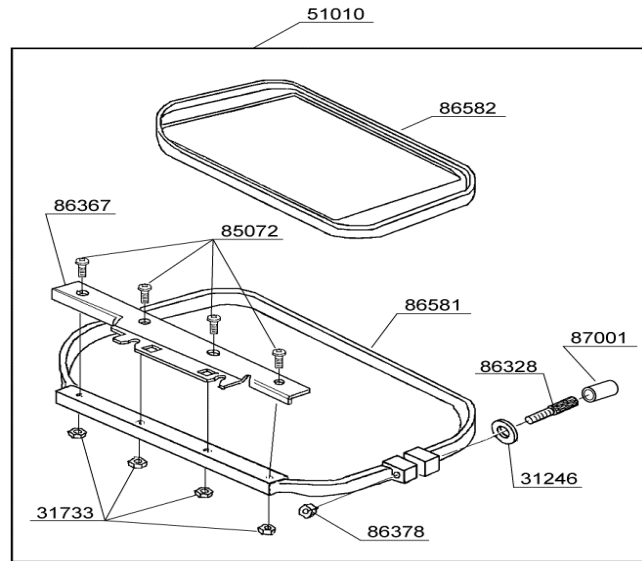
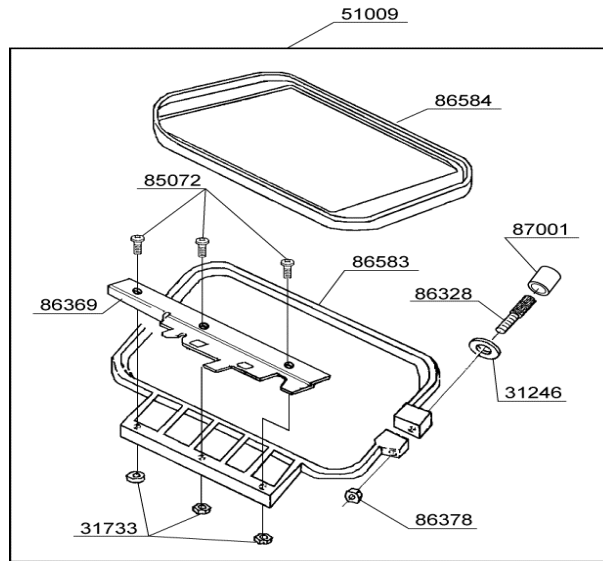


PART NO.	DESCRIPTION
1520	E3 CLIP-ON-WASHER
8400	E5 CLIP-ON-WASHER
25670	WASHER
32316	WASHER
37515	WASHER
44267	SPRING WASHER
53740	SPRING WASHER
61592	WASHER
63524	M3 BOLT
63805	WASHER
66318	M3 SCREW
66798	M4 SCREW
72858	WASHER
86308	FLAT CABLE
86312	HOOP SWITCH UNIT
86316	CABLE GUIDE
86324	SHAFT
86335	PROTECTION PLATE (Y)
86343	WIRE SPRING
86347	T PULLEY
86351	BELT HOLDER (Y)
86352	GEAR (Y)
86353	T PULLEY & GEAR (Y)
86356	Y BASE
86358	Y MOVING PLATE
86361	T PULLEY BASE (Y)
86365	Y SENSOR PLATE
86366	INSULATION SHEET
86368	Y BASE SUPPORT PLATE
86371	CORD GUIDE (B)
86372	CORD GUIDE (C)
86373	CORD GUIDE (D)
86374	INSULATION SHEET
86375	HOOP SWITCH
86376	M3 SCREW
86377	HOOP SECURING SCREW
86379	WASHER
86381	TIMING BELT (Y)
86950	HARNES
87000	M4 SCREW
87002	VINYL TUBE

BUYER'S MODEL NO.	CE-100 , CE-200	SECTION	PAGE	REVISION	REMARKS	PART NO.	DESCRIPTION
BUYER'S MODEL NAME	CE-100 : futura		20			44261	M4 SCREW
	CE-200 : Quantum futura					61221	M4 PHILLIPS SCREW
FACTORY MODEL	CA90560					86338	COVER
ORIGINAL ISSUE	MARCH, 2004		SERIAL NO.			86983	CARRIAGE

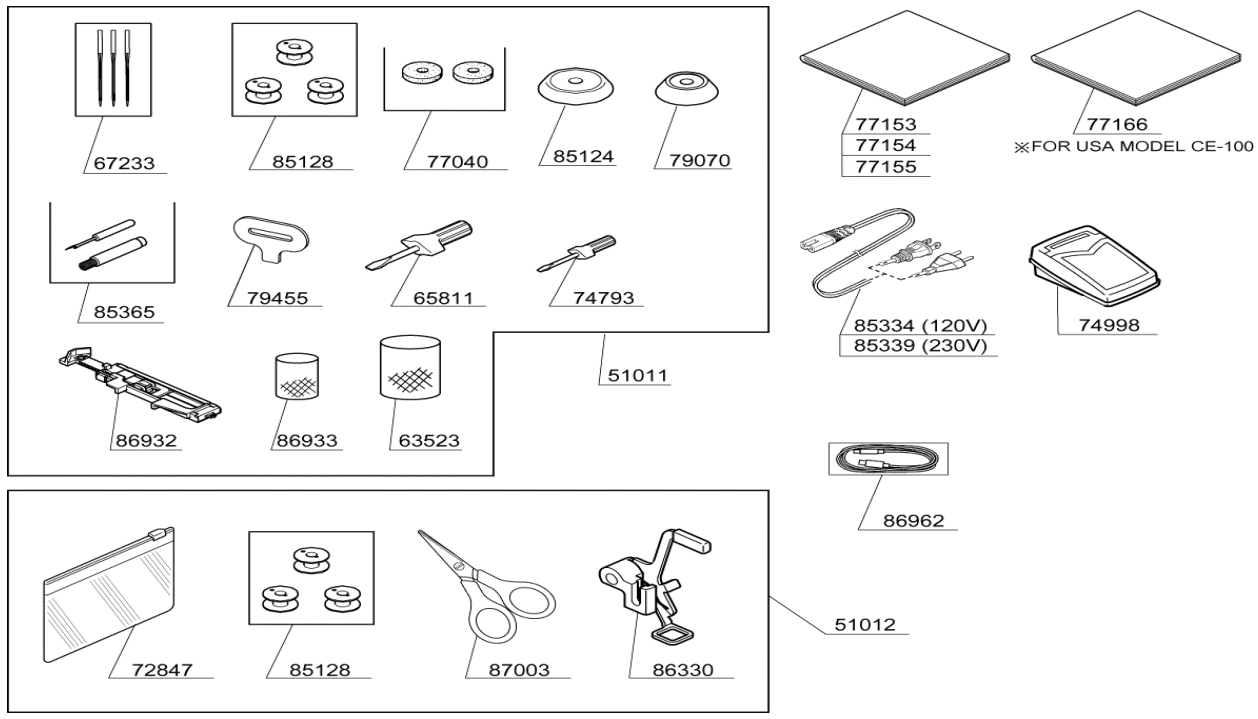


BUYER'S MODEL NO.	CE-100 , CE-200	SECTION	PAGE	REVISION	REMARKS	PART NO.	DESCRIPTION
BUYER'S MODEL NAME	CE-100 : futura		21			31246	WASHER
FACTORY MODEL	CE-200 : Quantum futura					31733	M3 NUT
ORIGINAL ISSUE	CA90560					51009	SMALL HOOP
	MARCH, 2004	SERIAL NO.				51010	LARGE HOOP



31246	WASHER	
31733	M3 NUT	
51009	SMALL HOOP	
51010	LARGE HOOP	
85072	M3 SCREW	
86328	HOOP ADJUSTING SCREW	
86367	HOOP MOUNTING PLATE	
86369	HOOP MOUNTING PLATE	
86378	M3 NUT	
86581	OUTER FRAME (L)	
86582	INNER FRAME (L)	
86583	OUTER FRAME (S)	
86584	INNER FRAME (S)	
87001	VINYL TUBE	

BUYER'S MODEL NO.	CE-100 , CE-200	SECTION	PAGE	REVISION	REMARKS	PART NO.	DESCRIPTION
BUYER'S MODEL NAME	CE-100 : futura		22			51011	ACCESSORY SET
FACTORY MODEL	CE-200 : Quantum futura					51012	ACCESSORY SET
ORIGINAL ISSUE	CA90560					63523	THREAD SPOOL NET (LONG)
	MARCH, 2004	SERIAL NO.				65811	LARGE SCREW DRIVER



PART NO.	DESCRIPTION
51011	ACCESSORY SET
51012	ACCESSORY SET
63523	THREAD SPOOL NET (LONG)
65811	LARGE SCREW DRIVER
67233	NEEDLE
72847	ACCESSORY VINYL BAG
74793	SMALL SCREW DRIVER
74998	FOOT CONTROL
77040	SPOOL PIN DISC
77153	INSTRUCTION BOOK (E/F/S)(CE-100)
77154	INSTRUCTION BOOK (E/F/S)(CE-200)
77155	INSTRUCTION BOOK (I/D/G)(CE-200)
77166	INSTRUCTION BOOK (E/F/S)(FOR USA CE-100)
79070	SPOOL PIN CAP
79455	LARGE SCREW DRIVER
85124	SPOOL PIN CAP
85128	BOBBIN
85334	POWER CORD (120V)
85339	POWER CORD (230V)
85365	BUTTONHOLE OPENER / BRUSH
86330	EMBROIDERY PRESSER FOOT
86932	BUTTONHOLE FOOT
86933	THREAD SPOOL NET (SHORT)
86962	USB CABLE
87003	SCISSORS