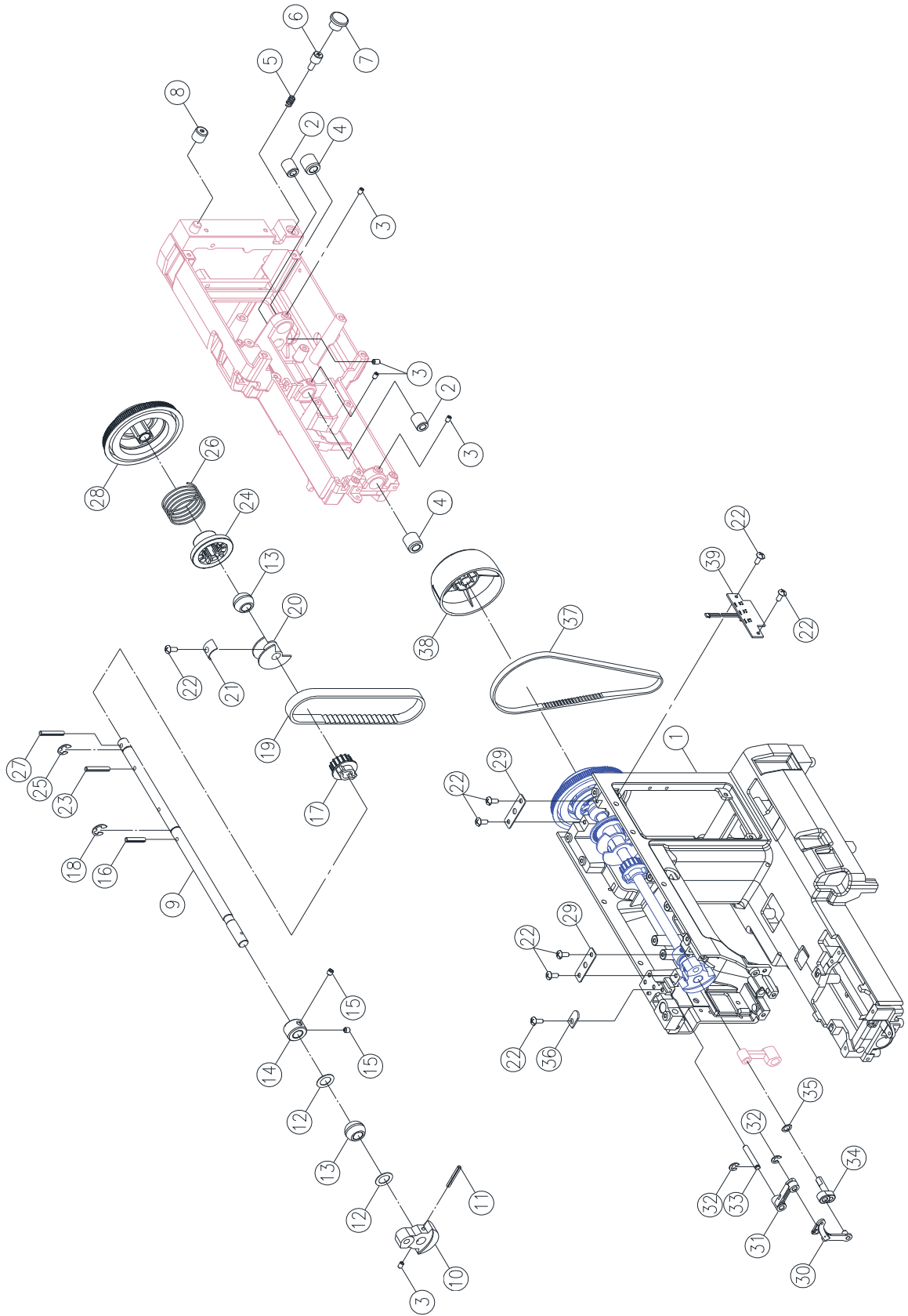


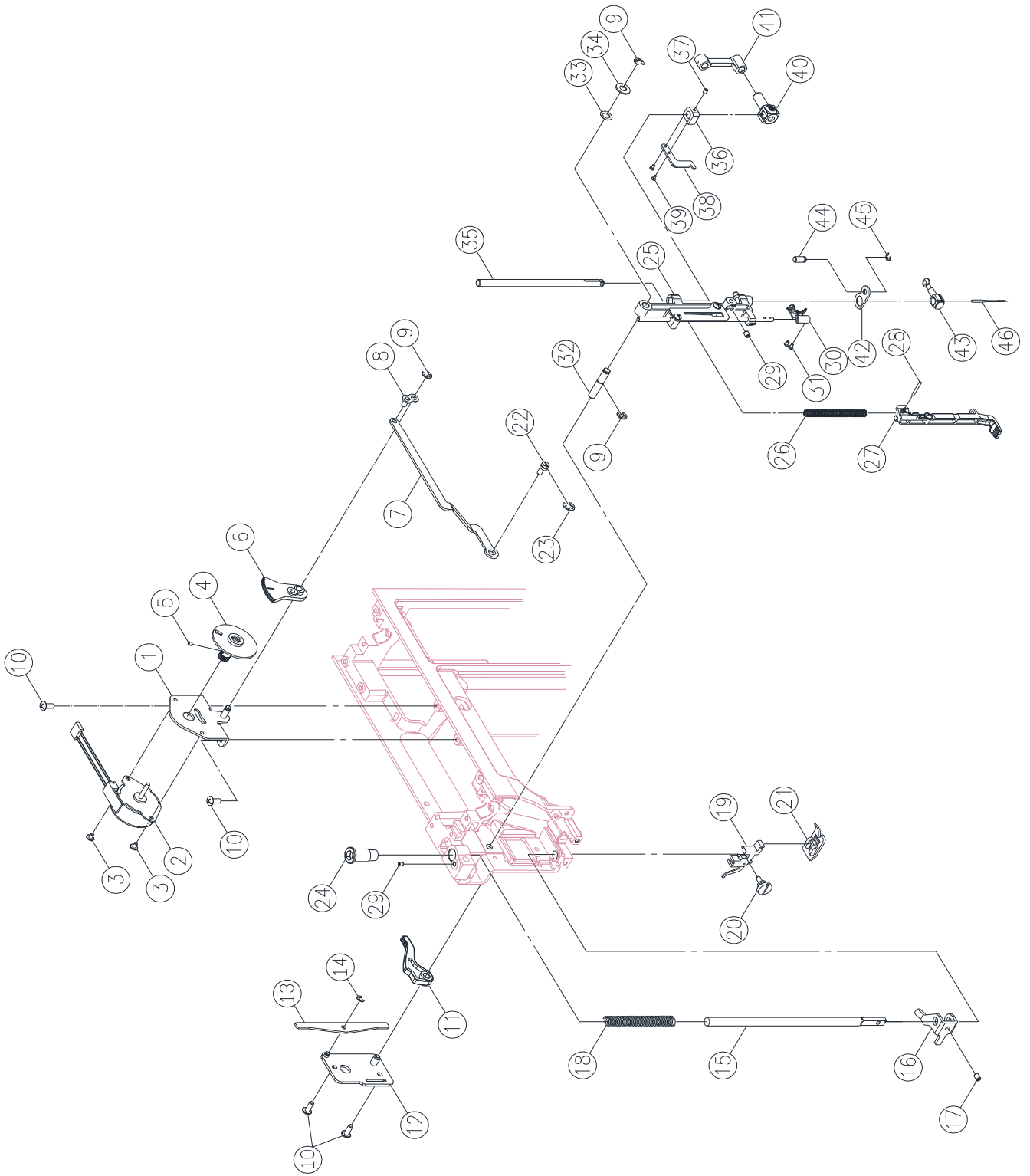


7640

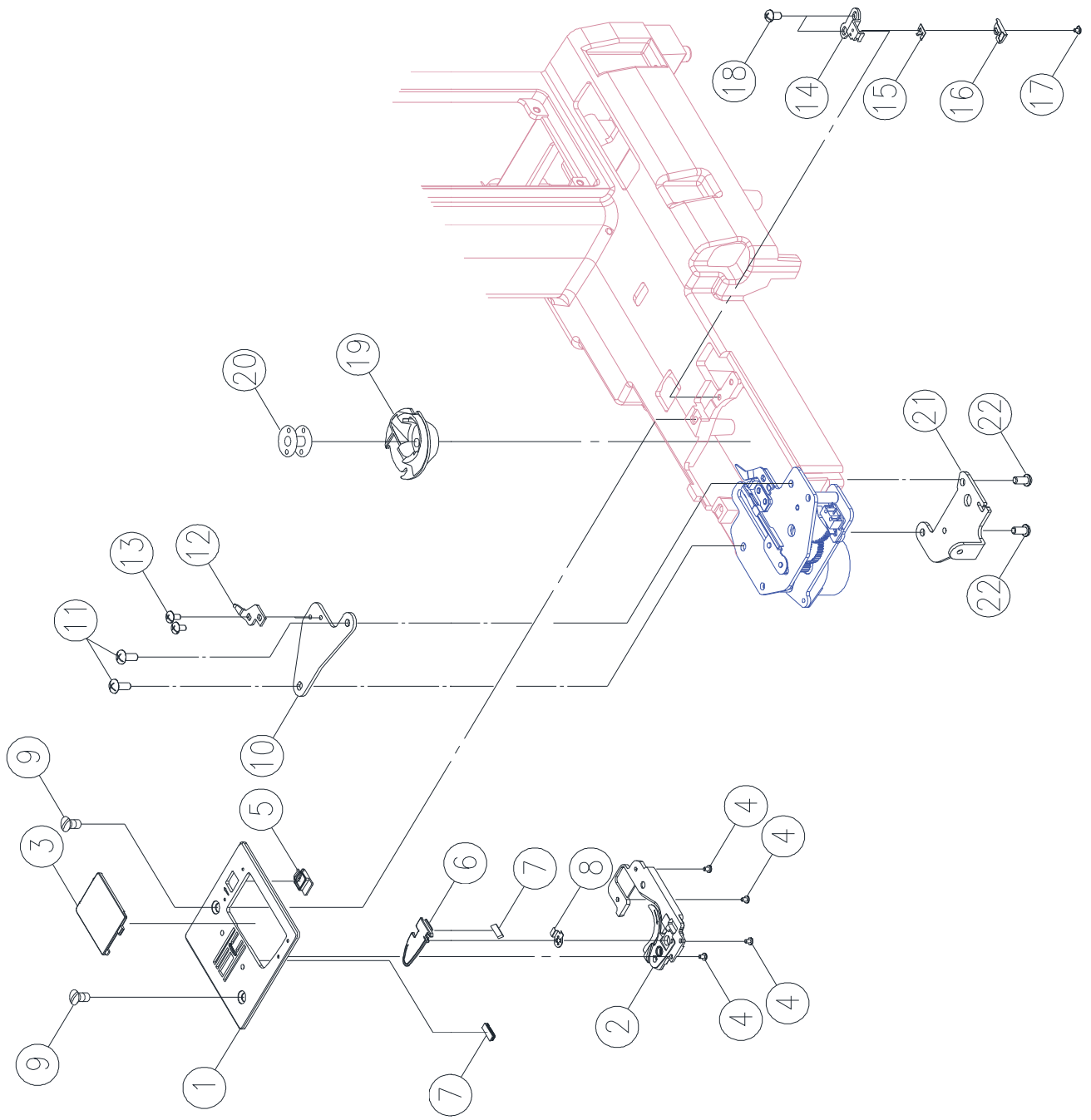
Liste de pièces
Lista de Piezas
Parts List



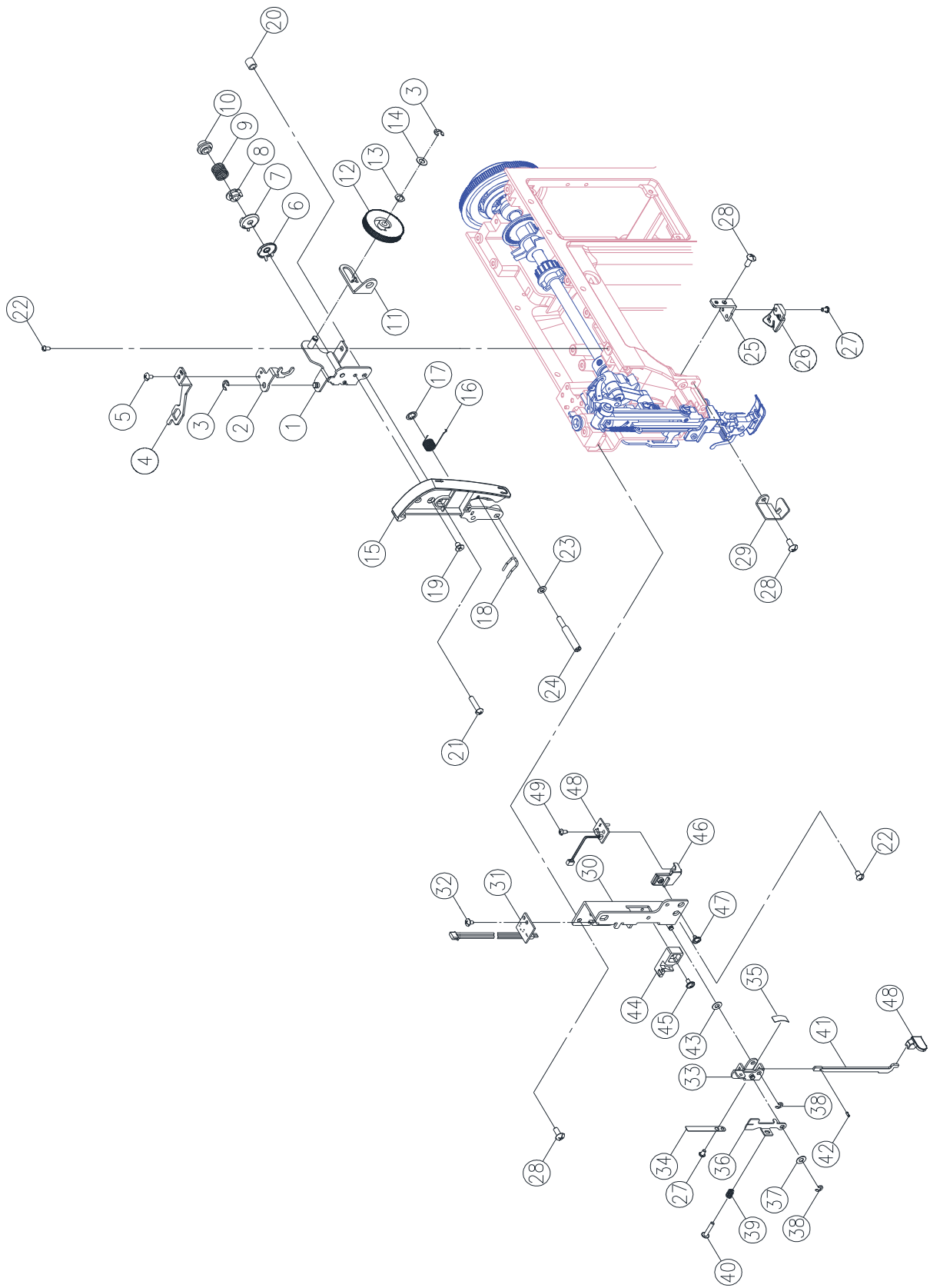
<u>Pos</u>	<u>Part No</u>	<u>Description</u>
17		ARM SHAFT SPROCKET
19		MOTOR DRIVE BELT
37	416685701	MOTOR DRIVE BELT(2M)
38	68003596	HAND WHEEL
39	68003049	PHOTO SENSOR PLATE
#1		THREAD TAKE UP LEVER COMPLETE



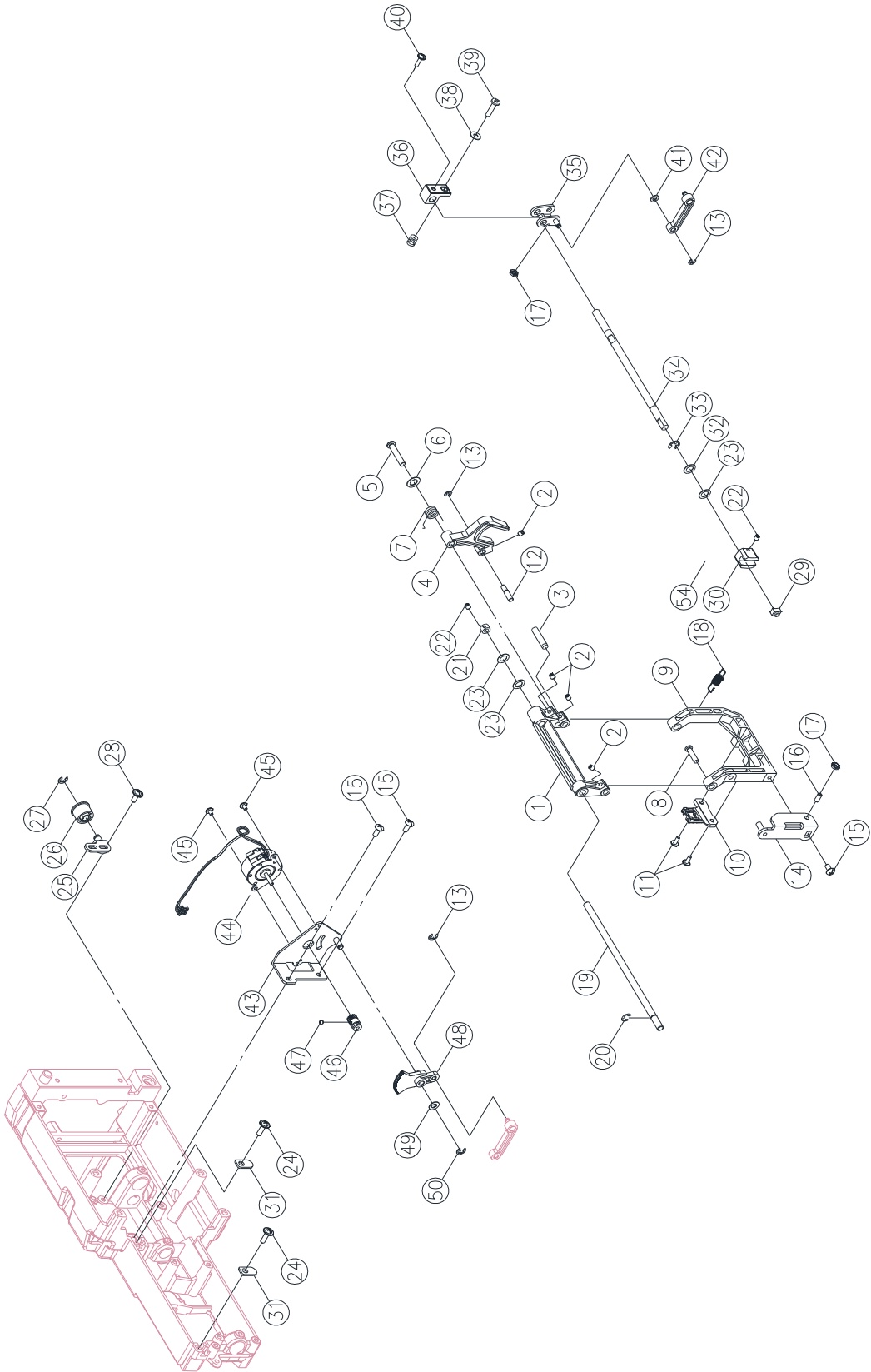
<u>Pos</u>	<u>Part No</u>	<u>Description</u>
11	68003659	PRESSER BAR LIFTER LEVER
19	416128201	SHANK COMPLETE
20	416184201	SET SCREW (9/64×40×7.5)
21	416127501	ZIGZAG PRESSER FOOT
30	68003556	AUTO THREADER
40		NEEDLE BAR BRACKET COMPLETE
41	416235801	NEEDLE BAR CRANK ROD
43	416245301	NEEDLE CLAMP COMPLETE
#1		ZIGZAG PULSE MOTOR PLATE COMPLETE
#3		NEEDLE BAR CRANK ROD COMPLETE



Pos	Part No	Description
1	68003669	NEEDLE PLATE
2	68003729	NEEDLE PLATE SUPPORTER
3	68003740	NEEDLE PLATE COVER
5	416155201	Needle plate cover open
6	68003571	THREAD GUIDE STAND
7	416172501	THREAD CUTTER
8	68003570	PRESS PLATE
19	416568801	SHUTTLE HOOK ASSEMBLE
20	68000175	BOBBIN
#2		NEEDLE PLATE COMPLETE

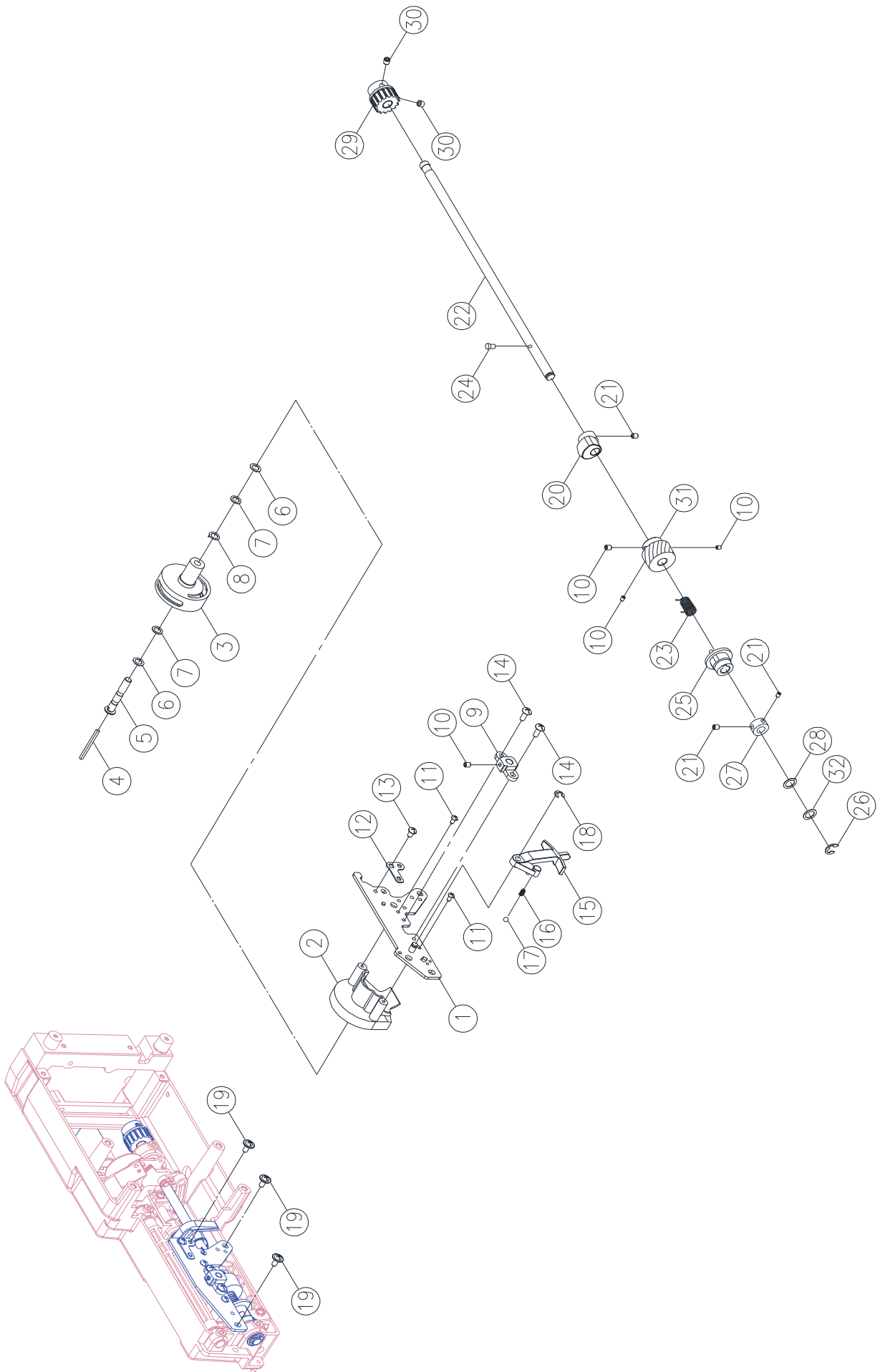


Pos	Part No	Description
48	68009195	LED LIGHT LAMP COMPLETE
50		BH LEVER BUTTON
#2		DIAL TENSION COMPLETE



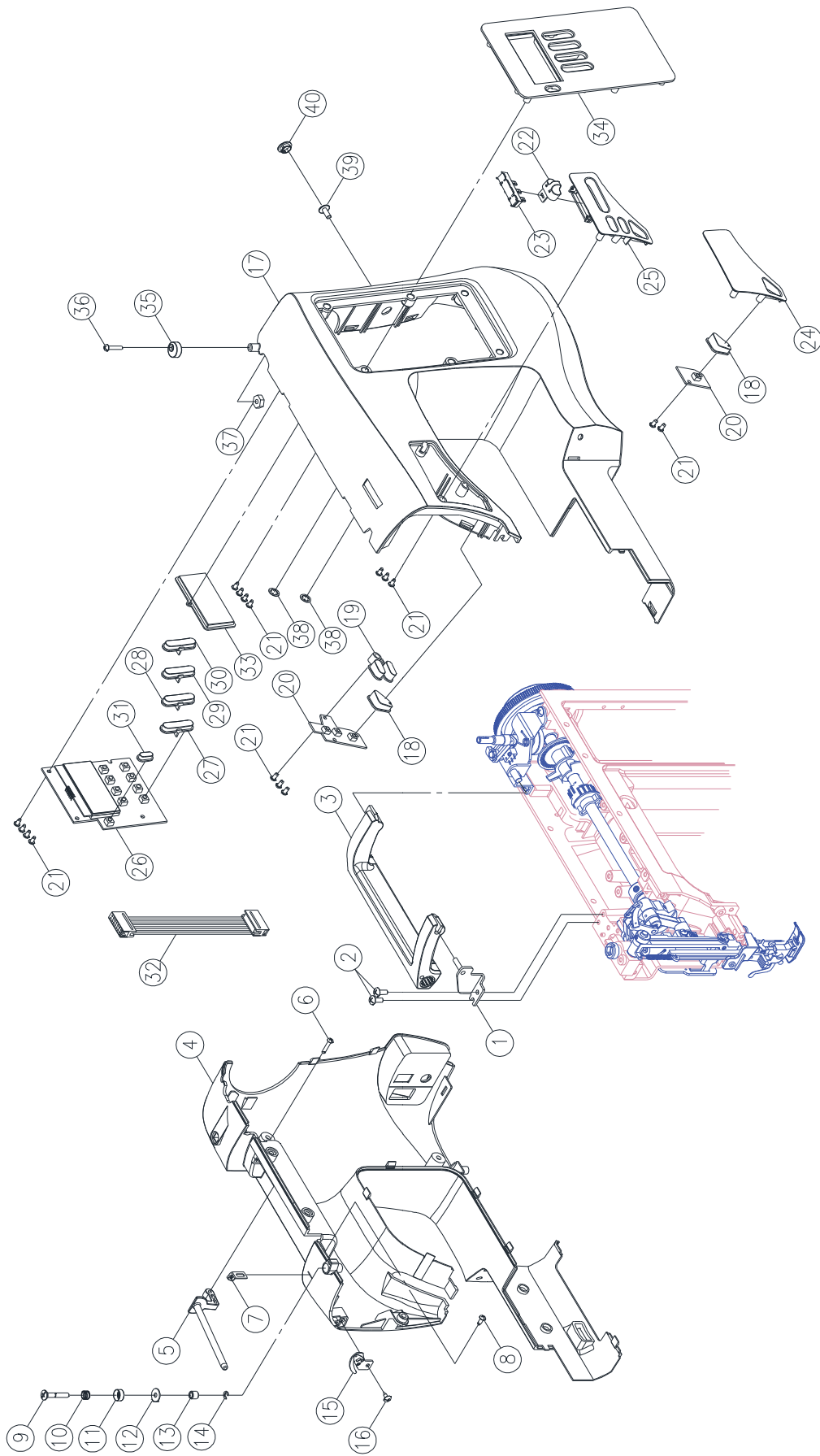
Pos Part No Description

Parts not available

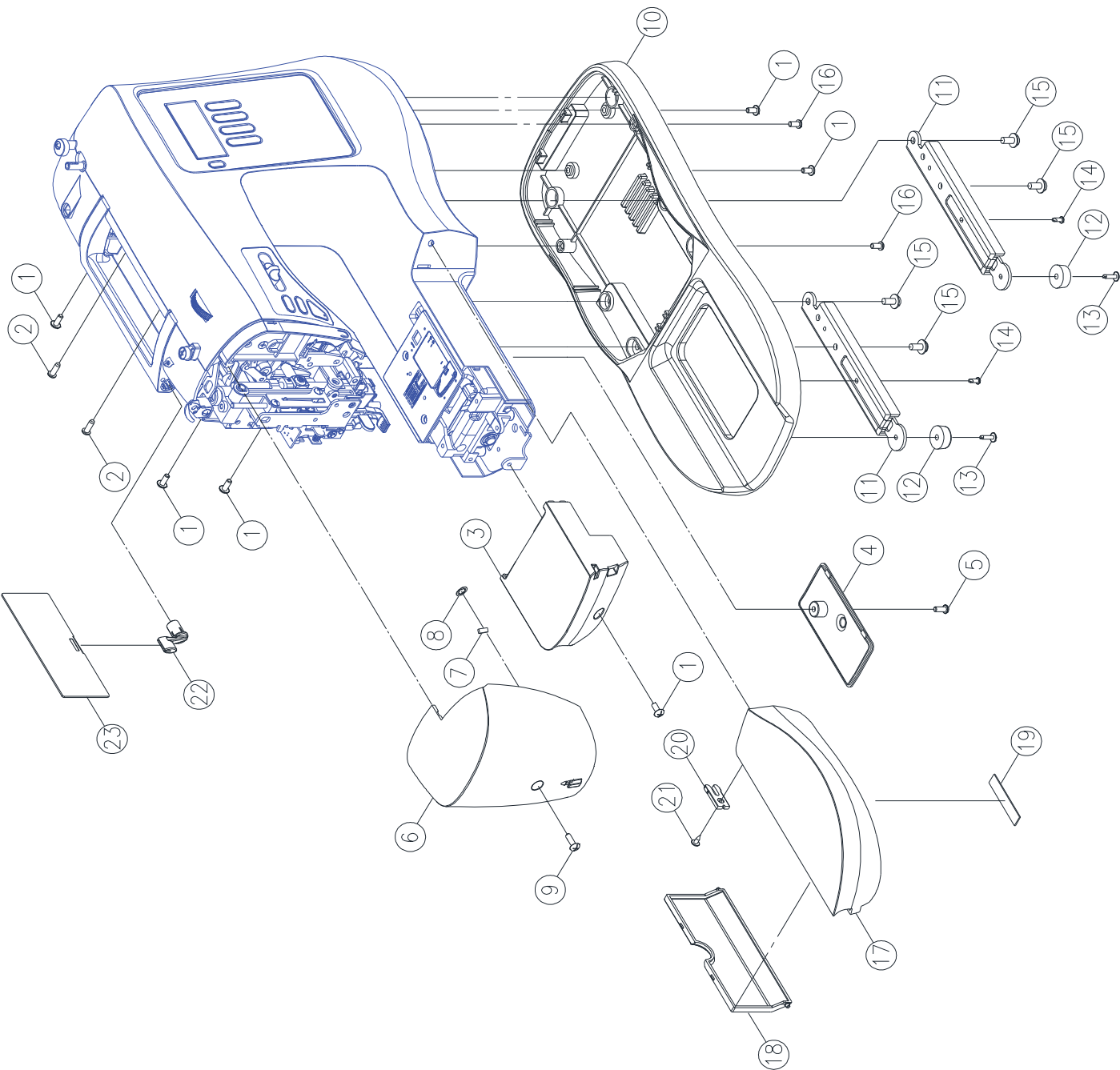


Pos	Part No	Description
3	416479801	SHUTTLE HOOK HOLDER
15		TOOTH LEVER ARM

Pos	Part No	Description
5	416149201	BOBBIN WINDER RUBBER PULLEY
9	416480101	MICRO SWITCH
14	68003767	HF TRANSFORMER COMPLETE
15		HF TRANSFORMER WIRE 120V US/CAN
		HF TRANSFORMER WIRE (230V) EU
19	68003771	MAIN CIRCUIT BOARD
		MAIN CIRCUIT BOARD
20	68009203	SWITCH RECEPTACLE ASS'Y (FOR 120V)
	68009202	SWITCH RECEPTACLE ASS'Y (FOR 230V)
22	416685401	CONTROLLER RECEPTACLE FOR U.S.
	416685501	CONTROLLER RECEPTACLE FOR EU.
24	68003800	FOOT CONTROLLER
27	412157903	POWER CORD 120V
	412157801	POWER CORD 230V (EU)
		POWER CORD 240V (AU)
28	68003801	DC MOTOR
#1		BOBBIN WINDER COMPLETE

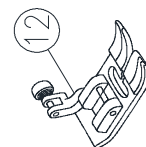
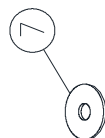
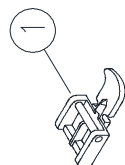
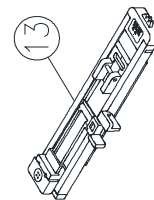
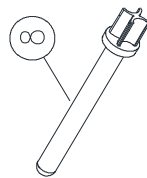
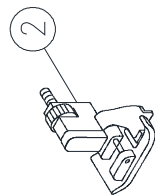
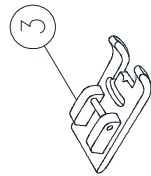
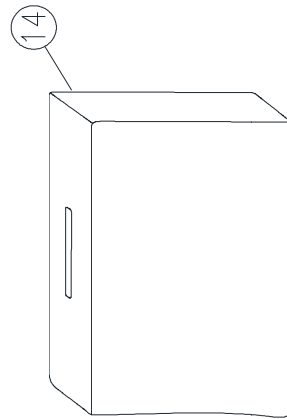
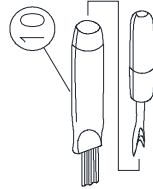
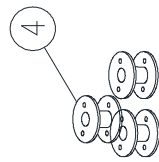
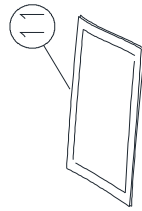
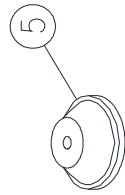
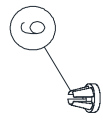


<u>Pos</u>	<u>Part No</u>	<u>Description</u>
4		BACK COVER 7640
5	68003809	SPOOL PIN BASE
17		FRONT COVER 7640
20	68003816	KEY PLATE 7460
22	68003817	SLIDE VOLUME LEVER
23		SLIDE VOLUME
26	68003825	LCD MAIN CIRCUIT BOARD 7640



<u>Pos</u>	<u>Part No</u>	<u>Description</u>
------------	----------------	--------------------

Parts not available



<u>Pos</u>	<u>Part No</u>	<u>Description</u>
1	416128701	ZIPPER FOOT (I)
2	416437101	BLIND HEM FOOT (F)
3	416437201	SATIN STITCH FOOT(A)
4	68000175	BOBBIN
5	68003700	SPOOL HOLDER (LARGE)
6	68003701	SPOOL HOLDER (SMALL)
7	416127301	SPOOL PIN FELT
8	68003702	SECOND SPOOL PIN
9	68000177	L-SCREWDRIVER
10	416127701	BRUSH/ SEAM RIPPER
11		NEEDLE
12	416127501	ALL PURPOSE FOOT
13		BUTTONHOLE FOOT
14		SOFT COVER COMPLETE