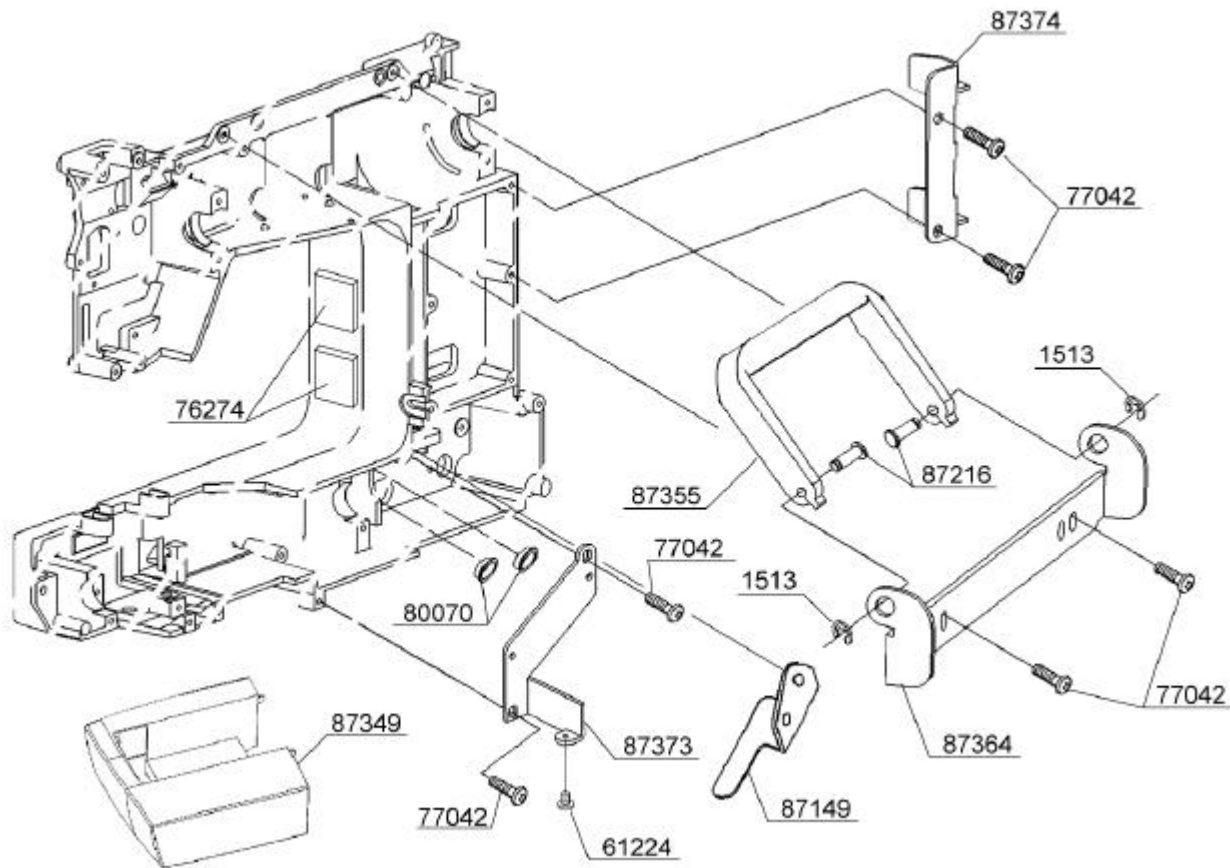
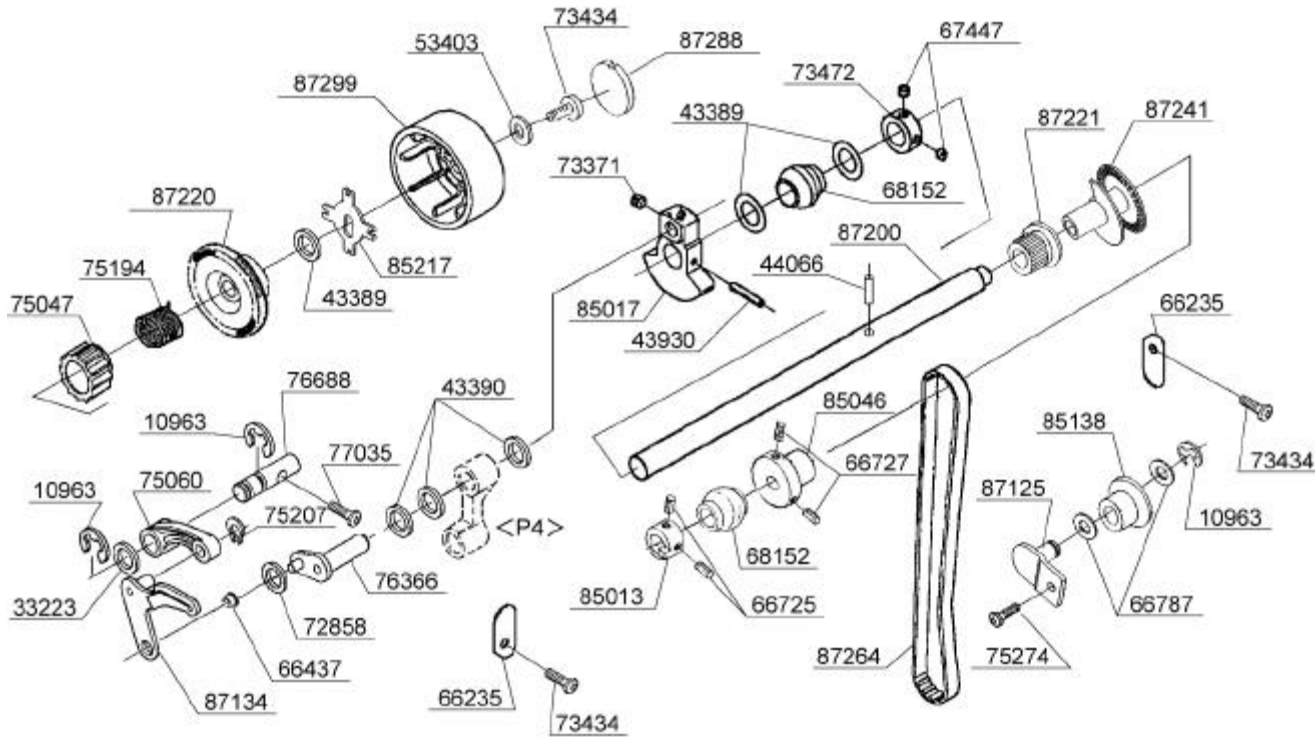


BUYER'S MODEL NO.	7424 , 7426	SECTION	PAGE	REVISION	REMARKS	PART NO.	DESCRIPTION	
BUYER'S MODEL NAME	COSMO J-1,CB-2,3		1			1513	E4 CLIP-ON-WASHER	
FACTORY MODEL	42460,424S0,42461,424S1						61224	M4 PHILLIPS SCREW
	42660,426S0,46661,426S1						76274	SPACER
ORIGINAL ISSUE	AUGUST , 2005	SERIAL NO.				77042	M4 PHILLIPS SCREW	



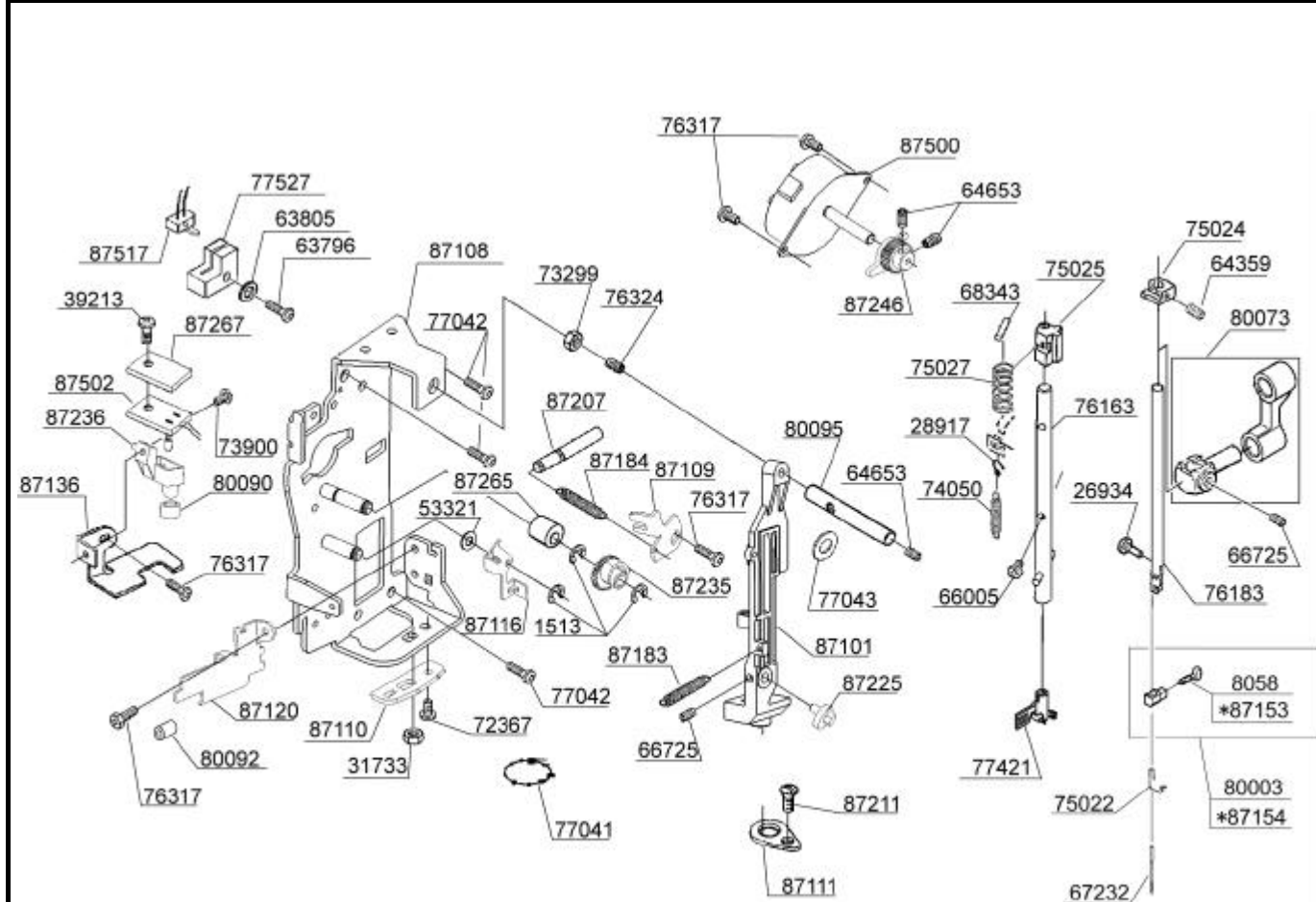
1513	E4 CLIP-ON-WASHER
61224	M4 PHILLIPS SCREW
76274	SPACER
77042	M4 PHILLIPS SCREW
80070	CORD GUIDE
87149	BRACKET
87216	PIN
87349	ACC. BOX
87355	HANDLE
87364	HANDLE BRACKET
87373	BRACKET
87374	BRACKET

BUYER'S MODEL NO.	7424 , 7426	SECTION	PAGE	REVISION	REMARKS	PART NO.	DESCRIPTION
BUYER'S MODEL NAME	COSMO J-1,CB-2,3		2			10963	E6 CLIP-ON-WASHER
FACTORY MODEL	42460,424S0,42461,424S1 42660,426S0,42661,426S1					33223	WASHER
ORIGINAL ISSUE	AUGUST , 2005	SERIAL NO.				43389	THRUST WASHER
						43930	SPRING PIN
						44066	SPRING PIN
						53403	WASHER
						66235	SECURING PLATE
						66437	BUSH
						66725	M4 SCREW
						66727	M4 SCREW
						66787	WASHER
						67447	M5 SCREW
						68152	BALL BUSH
						72858	WASHER
						73371	M6 SCREW
						73434	M4 PHILLIPS SCREW
						73472	COLLAR
						75047	CLUTCH
						75060	TAKE-UP LEVER CRANK
						75194	TORSION SPRING
						75207	CS-CLIP
						75274	M4 PHILLIPS SCREW
						76366	CRANK SHAFT
						76688	SHAFT
						77035	M4 PHILLIPS SCREW
						85013	POSITIONING COLLAR
						85017	BALANCER
						85046	COLLAR
						85138	TENSION ROLLER
						85217	RETAINER
						87125	IDLER PULLEY BRACKET
						87134	TAKE-UP LEVER
						87200	MAIN SHAFT
						87220	BELT PULLEY
						87221	UPPER TIMING BELT GEAR
						87241	ENCODER
						87264	TIMING BELT
						87288	PULLEY CAP
						87299	PULLEY



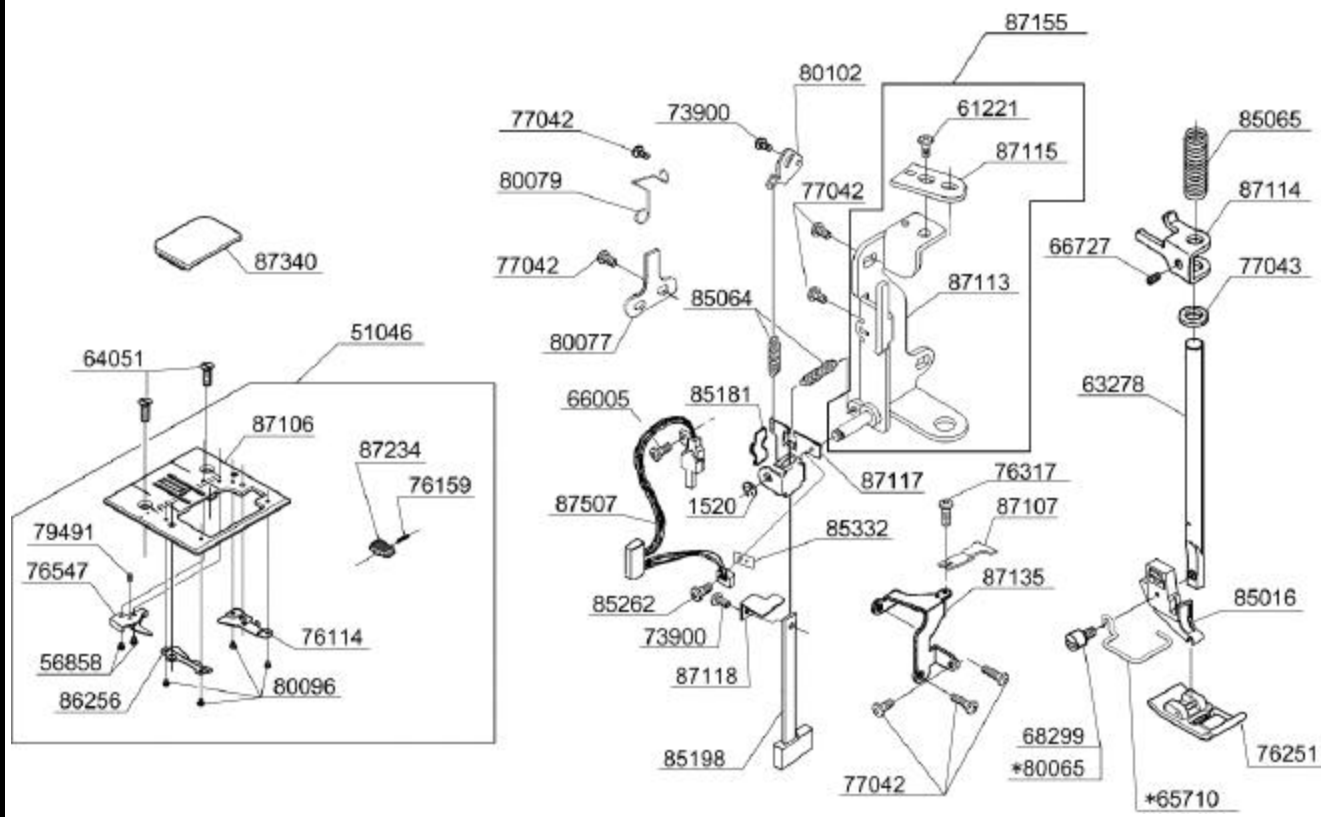
BUYER'S MODEL NO.	7424 , 7426	SECTION		PAGE		REVISION		REMARKS		PART NO.	DESCRIPTION
BUYER'S MODEL NAME	COSMO J-1,CB-2,3			3						10963	E6 CLIP-ON-WASHER
FACTORY MODEL	42460,424S0,42461,424S1									76317	M3 PHILLIPS SCREW
	42660,426S0,42661,426S1									77042	M4 PHILLIPS SCREW
ORIGINAL ISSUE	AUGUST , 2005				SERIAL NO.					77053	M3 PHILLIPS SCREW
<p>The diagram shows an exploded view of a mechanical assembly. On the left, a bobbin winder unit (87361) is shown with its mounting bracket (87127) and various screws (77042, 76317). A torsion spring (87182) is attached to the winder. A photo sensor circuit board (87527) is shown on the right, mounted on a bracket (87139) with screws (77042, 77053). Other components include a retainer (87129), a mounting bracket (87128), an extension spring (87180), a shoulder screw (87214), and a switch harness (87506). A clip-on washer (10963) is also shown.</p>										85274	M2 SCREW
										87127	BOBBIN WINDER BRACKET
										87128	MOUNTING BRACKET
										87129	RETAINER
										87139	MOUNTING BRACKET
										87180	EXTENSION SPRING
										87182	TORSION SPRING
										87214	M3 SHOULDER SCREW
										87242	INSULATION SHEET
										87361	BOBBIN WINDER UNIT
87506	SWITCH HARNESS										
87527	PHOTO SENSOR CIRCUIT BOARD										

BUYER'S MODEL NO.	7424 , 7426	SECTION	PAGE	REVISION	REMARKS	PART NO	DESCRIPTION
BUYER'S MODEL NAME	COSMO J-1,CB-2,3		4			1513	E4 CLIP-ON-WASHER
FACTORY MODEL	42460,424S0,42461,424S1 42660,426S0,46661,426S1					8058	NEEDLE CLAMP SCREW
ORIGINAL ISSUE	AUGUST , 2005	SERIAL NO.				26934	#8 SCREW



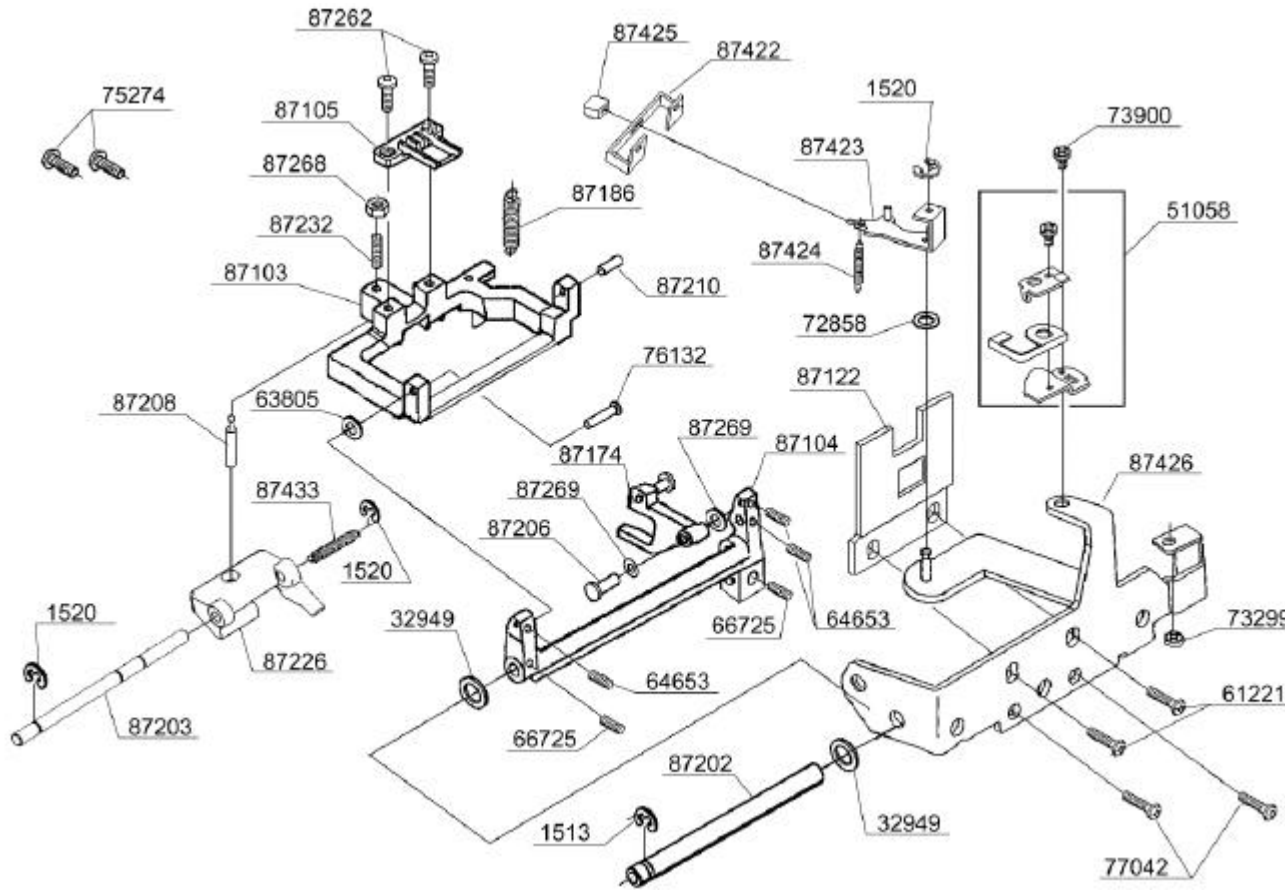
28917	HOOK FOR SPRING
31733	M3 NUT
39213	M3 SCREW
53321	THRUST WASHER
63796	M3 SCREW
63805	WASHER
64359	M4 SCREW
64653	M3 SCREW
66005	M2 PHILLIPS SCREW
66725	M4 SCREW
67232	NEEDLE
68343	PIN
72367	M4 CP SCREW
73299	M4 TORQUE NUT
73900	M3 PHILLIPS SCREW
74050	EXTENSION SPRING
75022	THREAD GUIDE
75024	STOPPER
75025	GUIDE BLOCK
75027	COMPRESSION SPRING
76163	THREADER SHAFT SET
76183	NEEDLE BAR
76317	M3 PHILLIPS SCREW
76324	M4 SCREW
77041	UNITY FASTENER
77042	M4 PHILLIPS SCREW
77043	FELT
77421	THREADER ASSEMBLY
77527	SENSOR COVER
80003	NEEDLE CLAMP SET
80073	NEEDLE BAR CRANK SET
80090	VINYL TUBE
80092	VINYL TUBE
80095	STRAIGHT PIN
87101	NEEDLE BAR SUPPORT
87108	NEEDLE BAR SUPPORT BRACKET
87109	SECURING PLATE
87110	NEEDLE BAR ADJUSTING PLATE
87111	NEEDLE BAR SWING BRACKET
87116	BELL CLANK FOR ZIGZAG
87120	THREAD GUIDE PLATE
87136	L-R LIMITER
87183	SPRING
87184	SPRING
87207	STRAIGHT PIN
87211	M3 SCREW
87225	ECCENTRIC CAM
87235	ZIGZAG CAM WITH GEAR
87236	LED LIGHT COVER
87246	PINION GEAR
87265	SPACER
87267	INSULATION SHEET
87500	STEPPING MOTOR
87502	LED LIGHT CIRCUIT BOARD
87517	SWITCH HARNESS FOR ZIGZAG
*87153	NEEDLE CLAMP SCREW
*87154	NEEDLE CLAMP SET

BUYER'S MODEL NO.	7424 , 7426	SECTION	PAGE	REVISION	REMARKS	PART NO.	DESCRIPTION
BUYER'S MODEL NAME	COSMO J-1,CB-2,3		5	August ,2005		1520	E3 CLIP-ON-WASHER
FACTORY MODEL	42460,424S0,42461,424S1 42660,426S0,42661,426S1					51046	NEEDLE PLATE SET
ORIGINAL ISSUE	AUGUST , 2005	SERIAL NO.				56858	M2 PHILLIPS SCREW
						63278	PRESSER BAR
						64051	M4 SCREW
						66005	M2 PHILLIPS SCREW
						66727	M4 SCREW
						68299	#7 SCREW FOR SHANK
						73900	M3 PHILLIPS SCREW
						76114	COVER GUIDE (R)
						76159	COMPRESSION LEVER
						76251	ZIGZAG PRESSER FOOT
						76317	M3 PHILLIPS SCREW
						76547	THREAD CONTROL PLATE
						77042	M4 PHILLIPS SCREW
						77043	FELT
						79491	SCREW
						80077	PRESSER BAR GUIDE SECURING PLATE
						80079	CORD GUIDE
						80093	M2 PHILLIPS SCREW
						80102	CONTROL PLATE
						85016	PRESSER FOOT HOLDER
						85064	EXTENSION SPRING
						85065	COMPRESSION SPRING
						85181	LEAF SPRING
						85198	BH PLATE(A)
						85262	M2 SCREW
						85332	SPACER
						86256	COVER GUIDE (L)
						87106	NEEDLE PLATE
						87107	BOBBIN CASE STOPPER
						87113	PRESSURE BAR BRACKET
						87114	PRESSURE BAR GUIDE
						87115	PRESSURE SUPPORT PLATE
						87117	BH PLATE B
						87118	BH PLATE C
						87135	BRACKET
						87155	PRESSURE BAR BRACKET SET
						87234	RELEASE LEVER
						87340	NEEDLE COVER PLATE
						87507	BH SWITCH HARNESS
						? 65710	FINGER GUARD (ITALY ONLY)
						? 80065	#7 SCREW FOR SHANK (ITALY ONLY)



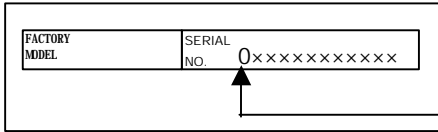
BUYER'S MODEL NO.	7424 , 7426	SECTION		PAGE		REVISION		REMARKS		PART NO.	DESCRIPTION
BUYER'S MODEL NAME	COSMO J-1,CB-2,3			7						1504	E7 CLIP-ON-WASHER
FACTORY MODEL	42460,424S0,42461,424S1									10963	E6 CLIP-ON-WASHER
	42660,426S0,46661,426S1									43390	THRUST WASHER
ORIGINAL ISSUE	AUGUST , 2005				SERIAL NO.					43392	THRUST WASHER
<p>The diagram shows an exploded view of a mechanical assembly. On the left, a vertical shaft assembly includes parts 85128, 86132, 76203, 80078, 86080, 43392, 66727, and 66725. In the center, a horizontal shaft assembly includes parts 76211, 87227, 67444, 10963, 87228, 66725, 67447, 64179, 87170, 87201, 85247, and 73434. On the right, a gear and shaft assembly includes parts 87171, 67447, 1504, 43390, 76141, 66725, and 67444.</p>										64179	SPRING PIN
										66725	M4 SCREW
										66727	M4 SCREW
										67444	COLLAR
										67447	M5 SCREW
										73434	M4 PHILLIPS SCREW
										76141	BALL METAL
										76203	OILING CORD
										76211	BEVEL GEAR
										80078	SHUTTLE RACE SHAFT
										85128	BOBBIN
										85247	SECURING PLATE
										86080	SHUTTLE RACE
										86132	BOBBIN CASE
										87170	BALL METAL
87171	TIMING BELT GEAR (LOWER)										
87201	LOWER STRAIGHT SHAFT										
87227	LIFTING CAM										
87228	FEED CAM										

BUYER'S MODEL NO.	7424 , 7426	SECTION		PAGE		REVISION		REMARKS		PART NO.	DESCRIPTION
BUYER'S MODEL NAME	COSMO J-1,CB-2,3			8		August ,2005				1513	E4 CLIP-ON-WASHER
FACTORY MODEL	42460,424S0,42461,424S1 42660,426S0,46661,426S1									1520	E3 CLIP-ON-WASHER
ORIGINAL ISSUE	AUGUST , 2005				SERIAL NO.					32949	WASHER
										51058	RETAINER SET
										61221	M4 PHILLIPS SCREW
										63805	WASHER
										64653	M3 SCREW
										66725	M4 SCREW
										72858	WASHER
										73299	M4 TORQUE NUT
										73900	M3 PHILLIPS SCREW
										75274	M4 PHILLIPS SCREW
										76132	SHAFT
										77042	M4 PHILLIPS SCREW
										87103	FEED DOG BASE
										87104	FEED DOG BASE SUPPORT
										87105	FEED DOG
										87122	SUPPORT PLATE
										87174	FORKED CRANK
										87186	TORSION SPRING
										87202	SHAFT
										87203	SHAFT
										87206	PIN
										87208	BALL HEADED PIN
										87210	PIN
										87226	VERTICAL FEED BLOCK
										87232	M6 STUD SCREW
										87262	M3 CP SCREW
										87268	M6 NUT
										87269	WASHER
										87422	DROP GUIDE
										87423	DROP LEVER
										87424	TORSION SPRING
										87425	DROP KNOB
										87426	SECURING BRACKET
										87433	TORSION SPRING

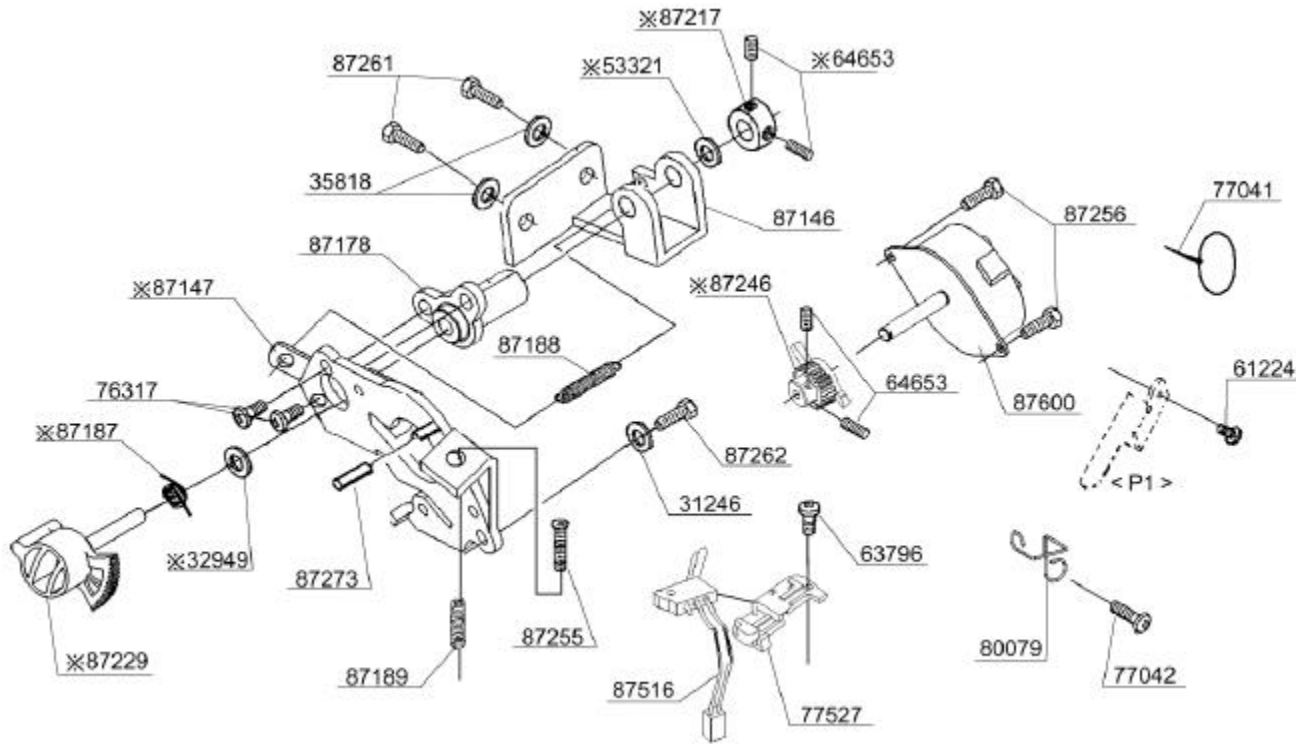


BUYER'S MODEL NO.	7424 , 7426	SECTION	PAGE	REVISION	REMARKS	PART NO.	DESCRIPTION
BUYER'S MODEL NAME	COSMO J-1,CB-2,3		9-1			31246	WASHER
FACTORY MODEL	42460,424S0					35818	WASHER
	42660,426S0					53321	THRUST WASHER
ORIGINAL ISSUE	AUGUST , 2005	SERIAL NO.				61224	M4 PHILLIPS SCREW

NOTE : PARTS NUMBER WITH ? MARKS ARE FOR MACHINES SERIAL NUMBERS WITH "0" AT FIRST DIGIT.

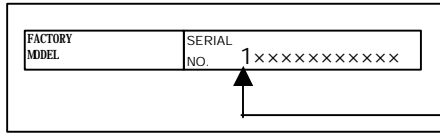


FIRST DIGIT

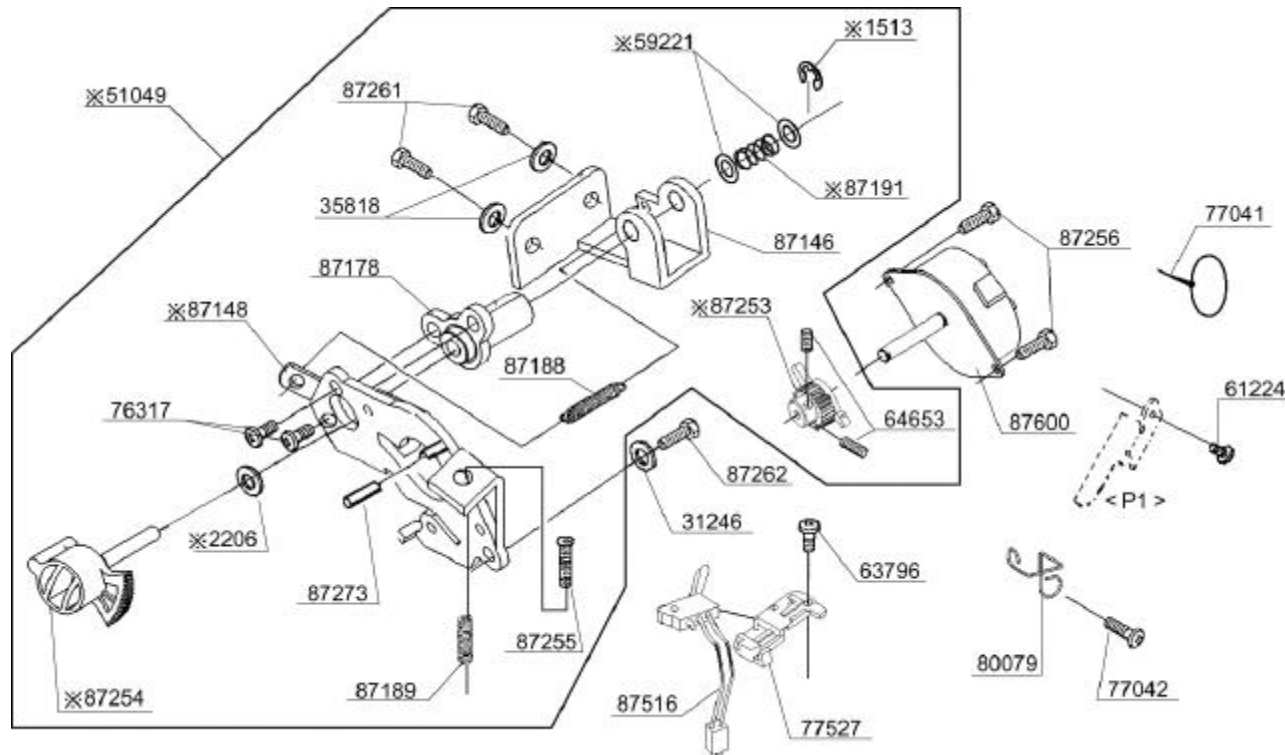


31246	WASHER
35818	WASHER
53321	THRUST WASHER
61224	M4 PHILLIPS SCREW
63796	M3 SCREW
64653	M3 SCREW
76317	M3 PHILLIPS SCREW
77041	UNITY FASTENER
77042	M4 PHILLIPS SCREW
77527	SENSOR COVER
80079	CORD GUIDE
87146	BRACKET
87178	FEED REGULATOR SHAFT METAL BUSH
87188	EXTENSION SPRING
87189	COMPRESSION SPRING
87255	M4 BOLT
87256	M3 PHILLIPS SCREW
87261	CP BOLT
87262	M3 CP SCREW
87273	PIN
87516	SWITCH HARNESS
87600	STEPPING MOTOR
? 32949	WASHER
? 87147	STEPPING MOTOR BRACKET
? 87187	TORSION SPRING
? 87217	COLLAR
? 87229	FEED REGULATOR
? 87246	PINION GEAR

BUYER'S MODEL NO.	7424 , 7426	SECTION	PAGE	REVISION	REMARKS	PART NO.	DESCRIPTION
BUYER'S MODEL NAME	COSMO J-1,CB-2,3		9-2			31246	WASHER
FACTORY MODEL	42461,424S1					35818	WASHER
	46661,426S1					53321	THRUST WASHER
ORIGINAL ISSUE	AUGUST , 2005	SERIAL NO.				61224	M4 PHILLIPS SCREW



NOTE : PARTS NUMBER WITH ? MARKS ARE FOR MACHINES SERIAL NUMBERS WITH "1" AT FIRST DIGIT.



31246	WASHER
35818	WASHER
53321	THRUST WASHER
61224	M4 PHILLIPS SCREW
63796	M3 SCREW
64653	M3 SCREW
76317	M3 PHILLIPS SCREW
77041	UNITY FASTENER
77042	M4 PHILLIPS SCREW
77527	SENSOR COVER
80079	CORD GUIDE
87146	BRACKET
87178	FEED REGULATOR SHAFT METAL BUSH
87187	TORSION SPRING
87188	EXTENSION SPRING
87189	COMPRESSION SPRING
87217	COLLAR
87255	M4 BOLT
87256	M3 PHILLIPS SCREW
87261	CP BOLT
87262	M3 CP SCREW
87273	PIN
87516	SWITCH HARNESS
87600	STEPPING MOTOR
? 1513	E4 CLIP-ON-WASHER
? 2206	WASHER
? 51049	FEED REGULATOR UNIT
? 59221	WASHER
? 87148	STEPPING MOTOR BRACKET
? 87191	COMPRESSION SPRING
? 87253	PINION GEAR
? 87254	FEED REGULATOR

BUYER'S MODEL NO.	7424 , 7426	SECTION		PAGE		REVISION		REMARKS		PART NO.	DESCRIPTION		
BUYER'S MODEL NAME	COSMO J-1,CB-2,3		10-2							1520	E3 CLIP-ON-WASHER		
FACTORY MODEL	42461,424S1									39213	M3 SCREW		
	42661,426S1									47181	TAPPING SCREW		
ORIGINAL ISSUE	AUGUST , 2005	SERIAL NO.								61222	M4 PHILLIPS SCREW		
<div style="display: flex; justify-content: space-between; align-items: center;"> <div style="border: 1px solid black; padding: 5px;"> <p>120V</p> </div> <div style="border: 1px solid black; padding: 5px;"> <table border="1" style="width: 100%; border-collapse: collapse;"> <tr> <td style="width: 50%; padding: 2px;">FACTORY MODEL</td> <td style="width: 50%; padding: 2px;">SERIAL NO. 1XXXXXXXXXX</td> </tr> </table> <p style="text-align: center; margin-top: 5px;">↑ FIRST DIGIT</p> </div> <div style="border: 1px solid black; padding: 5px; width: 60%;"> <p>NOTE : PARTS NUMBER WITH ? MARKS ARE FOR MACHINES SERIAL NUMBERS WITH "1" AT FIRST DIGIT.</p> </div> </div>										FACTORY MODEL	SERIAL NO. 1XXXXXXXXXX		
FACTORY MODEL	SERIAL NO. 1XXXXXXXXXX												
										61224	M4 PHILLIPS SCREW		
										77035	M4 PHILLIPS SCREW		
										77041	UNITY FASTENER		
										77042	M4 PHILLIPS SCREW		
										77524	GEAR CLUTCH		
										80081	SWITCH BRACKET		
										80093	VINYL TUBE		
										86945	JUMPER HARNESS		
										87126	MAIN MOTOR BRACKET		
										87237	MOTOR FAN		
										87261	CP BOLT		
										87263	DRIVING BELT		
										87291	CPU CIRCUIT BOARD BOX		
										87316	AC CIRCUIT BOARD BOX		
										87510	MAIN MOTOR		
										87513	PIN-JACK HARNESS		
										87514	TRANSFORMER		
										87522	13P CORD HARNESS		
										87523	4P CORD HARNESS		
										87524	5P CORD HARNESS		
										87529	4P CORD HARNESS		
										87530	CIRCUIT BOARD		
										87536	INLET HARNESS		
										87541	SWITCH		
										87542	INSULATION SHEET		
										? 87585	CPU CIRCUIT BOARD		

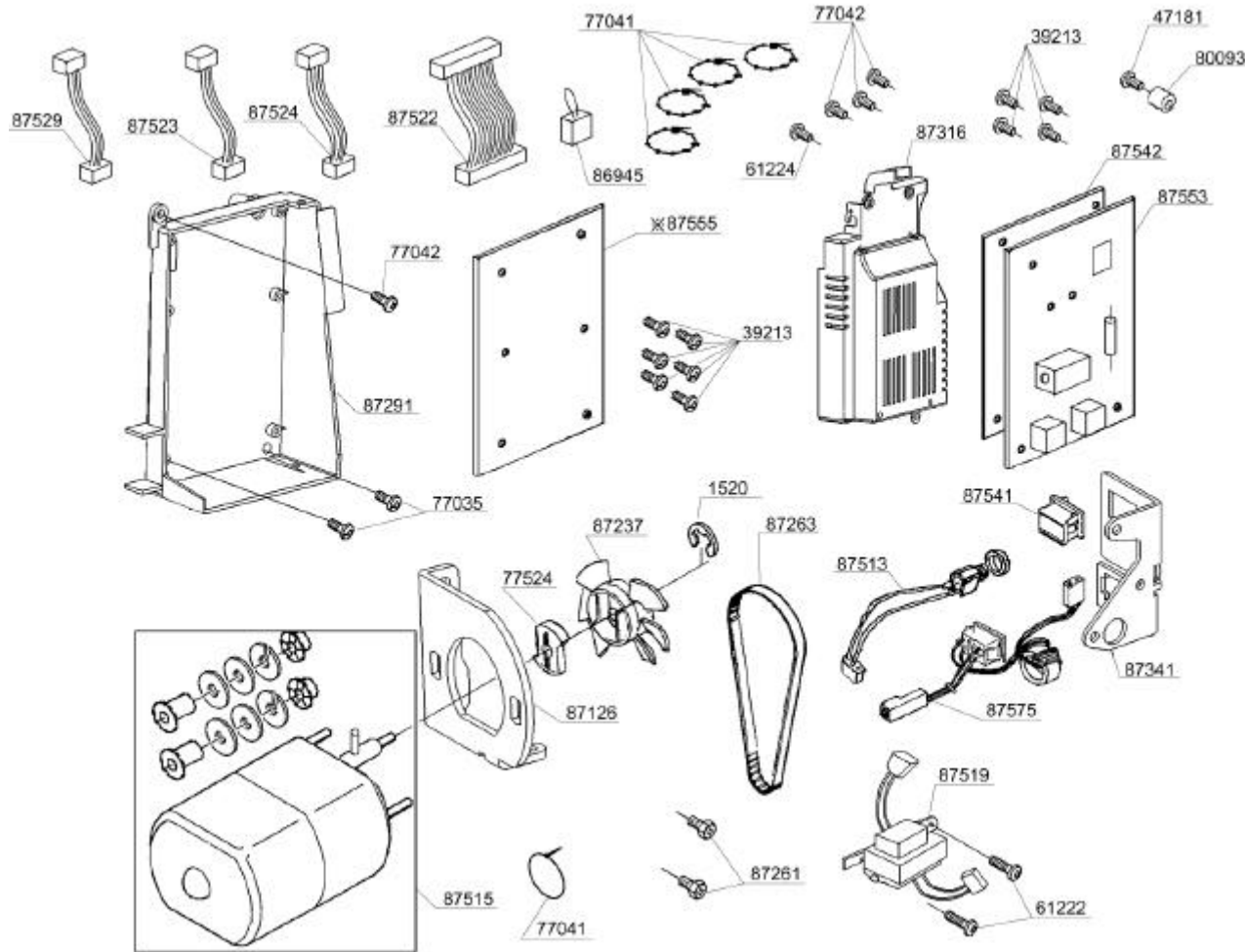
BUYER'S MODEL NO.	7424 , 7426	SECTION	PAGE	REVISION	REMARKS	PART NO.	DESCRIPTION
BUYER'S MODEL NAME	COSMO J-1,CB-2,3		10-3			1520	E3 CLIP-ON-WASHER
FACTORY MODEL	42460,424S0					39213	M3 SCREW
	42660,426S0					47181	TAPPING SCREW
ORIGINAL ISSUE	AUGUST , 2005	SERIAL NO.				61222	M4 PHILLIPS SCREW

230V

FACTORY MODEL	SERIAL NO.
	0xxxxxxxxxxx

FIRST DIGIT

NOTE : PARTS NUMBER WITH ? MARKS ARE FOR MACHINES SERIAL NUMBERS WITH "0" AT FIRST DIGIT.



1520	E3 CLIP-ON-WASHER
39213	M3 SCREW
47181	TAPPING SCREW
61222	M4 PHILLIPS SCREW
61224	M4 PHILLIPS SCREW
77035	M4 PHILLIPS SCREW
77041	UNITY FASTENER
77042	M4 PHILLIPS SCREW
77524	GEAR CLUTCH
80093	VINYL TUBE
86945	JUMPER HARNESS
87126	MAIN MOTOR BRACKET
87237	MOTOR FAN
87261	CP BOLT
87263	DRIVING BELT
87291	CPU CIRCUIT BOARD BOX
87316	AC CIRCUIT BOARD BOX
87341	SWITCH BRACKET
87513	PIN-JACK HARNESS
87515	MAIN MOTOR
87519	TRANSFORMER
87522	13P CORD HARNESS
87523	4P CORD HARNESS
87524	5P CORD HARNESS
87529	4P CORD HARNESS
87541	SWITCH
87542	INSULATION SHEET
87553	CIRCUIT BOARD
87575	INLET HARNESS
? 87555	CPU CIRCUIT BOARD

BUYER'S MODEL NO.	7424 , 7426	SECTION	PAGE	REVISION	REMARKS	PART NO.	DESCRIPTION
BUYER'S MODEL NAME	COSMO J-1,CB-2,3		11			2744	WASHER
FACTORY MODEL	42460,424S0,42461,424S1					25670	WASHER
	42660,426S0,42661,426S1					39213	M3 SCREW
ORIGINAL ISSUE	AUGUST , 2005	SERIAL NO.				44261	M4 SCREW
						58024	TAPPING SCREW
						59221	WASHER
<p>87562 ×FOR MODEL 7424 ONLY</p> <p>87563 ×FOR MODEL 7426 ONLY</p>						61222	M4 PHILLIPS SCREW
						61224	M4 PHILLIPS SCREW
<p>87459 ×FOR MODEL 7424 ONLY</p> <p>87464 ×FOR MODEL 7426 ONLY</p>						64360	TOOTHED WASHER
						64617	TAPPING SCREW
<p>87459 ×FOR MODEL 7424 ONLY</p> <p>87464 ×FOR MODEL 7426 ONLY</p>						65736	M4 PHILLIPS SCREW
						67533	RUBBER CUSHION
<p>87459 ×FOR MODEL 7424 ONLY</p> <p>87464 ×FOR MODEL 7426 ONLY</p>						73299	M4 TORQUE NUT
						74795	TAPPING SCREW
<p>87459 ×FOR MODEL 7424 ONLY</p> <p>87464 ×FOR MODEL 7426 ONLY</p>						76440	BOBBIN WINDER LATCH
						76511	SEAL
<p>87459 ×FOR MODEL 7424 ONLY</p> <p>87464 ×FOR MODEL 7426 ONLY</p>						77042	M4 PHILLIPS SCREW
						77044	M3 PHILLIPS SCREW
<p>87459 ×FOR MODEL 7424 ONLY</p> <p>87464 ×FOR MODEL 7426 ONLY</p>						86038	STUD SCREW
						86902	INDICATOR WINDOW
<p>87459 ×FOR MODEL 7424 ONLY</p> <p>87464 ×FOR MODEL 7426 ONLY</p>						87119	FACE COVER BRACKET
						87218	NUT
<p>87459 ×FOR MODEL 7424 ONLY</p> <p>87464 ×FOR MODEL 7426 ONLY</p>						87239	PATTERN DRAWER
						87270	RUBBER FOOT
<p>87459 ×FOR MODEL 7424 ONLY</p> <p>87464 ×FOR MODEL 7426 ONLY</p>						87271	RUBBER FOOT
						87272	BRUSH
<p>87459 ×FOR MODEL 7424 ONLY</p> <p>87464 ×FOR MODEL 7426 ONLY</p>						87293	SLIDE LEVER
						87344	BLADE
<p>87459 ×FOR MODEL 7424 ONLY</p> <p>87464 ×FOR MODEL 7426 ONLY</p>						87345	BLADE FIXTURE
						87376	FACE COVER
<p>87459 ×FOR MODEL 7424 ONLY</p> <p>87464 ×FOR MODEL 7426 ONLY</p>						87402	LED PANEL
						87404	KNOB
<p>87459 ×FOR MODEL 7424 ONLY</p> <p>87464 ×FOR MODEL 7426 ONLY</p>						87437	PATTERN SWITCH
						87459	PATTERN SEAL (FOR MODEL 7424 ONLY)
<p>87459 ×FOR MODEL 7424 ONLY</p> <p>87464 ×FOR MODEL 7426 ONLY</p>						87464	PATTERN SEAL (FOR MODEL 7426 ONLY)
						87475	CONTROL PANEL
<p>87459 ×FOR MODEL 7424 ONLY</p> <p>87464 ×FOR MODEL 7426 ONLY</p>						87477	BUTTON
						87481	BUTTON
<p>87459 ×FOR MODEL 7424 ONLY</p> <p>87464 ×FOR MODEL 7426 ONLY</p>						87482	BUTTON
						87562	SWITCH CIRCUIT BOARD (FOR MODEL 7424 ONLY)
<p>87459 ×FOR MODEL 7424 ONLY</p> <p>87464 ×FOR MODEL 7426 ONLY</p>						87563	SWITCH CIRCUIT BOARD (FOR MODEL 7426 ONLY)
						87590	SWITCH HARNESS

BUYER'S MODEL NO.	7424 , 7426	SECTION	PAGE	REVISION	REMARKS	PART NO.	DESCRIPTION
BUYER'S MODEL NAME	COSMO J-1,CB-2,3		13			51053	ACCESSORY SET
FACTORY MODEL	42460,424S0,42461,424S1					64083	SPOOL PIN
	42660,426S0,46661,426S1					76252	ZIPPER FOOT
ORIGINAL ISSUE	AUGUST , 2005	SERIAL NO.				76255	BLIND STITCH FOOT
<p>51053</p> <p>OPTIONAL OR STANDARD FOR LIMITED VERSION.</p> <p>87277</p> <p>85128</p> <p>87287</p> <p>87289</p> <p>87290</p> <p>64083</p> <p>77040</p> <p>85365</p> <p>79455</p> <p>77087</p> <p>77066</p> <p>76620</p> <p>76252</p> <p>76255</p> <p>85015</p> <p>87286</p> <p>INSTRUCTION BOOK</p> <p>87534 (120V)</p> <p>85339 (230V)</p> <p>87532</p>						77237	INSTRUCTION BOOK (Eng/Fre/Spa) FOR MODEL7426 ONLY
						77289	INSTRUCTION BOOK (Ita/Dut/Ger)
						77276	INSTRUCTION BOOK (Eng/Fre/Spa) FOR MODEL7424 ONLY
						77279	INSTRUCTION BOOK (Fre/Gree/Eng)
						77295	INSTRUCTION BOOK (Dan/Swe/Nor)
						77298	INSTRUCTION BOOK (Fin/Estonian/Portuqese)
						79455	LARGE SCREW DRIVER
						85015	SATIN FOOT
						85128	BOBBIN
						85339	POWER CORD (230V)
						85365	BUTTONHOLE OPENER / BRUSH
						87277	NEEDLE SET
						87286	VINYL COVER
						87287	SPOOL PIN CAP (MINI)
						87289	SPOOL PIN CAP (SMALL)
87290	SPOOL PIN CAP (LARGE)						
87332	EXTENSION TABLE						
87532	FOOT CONTROL (PIN-JACK TYPE)						
87534	POWER CORD (120V)						