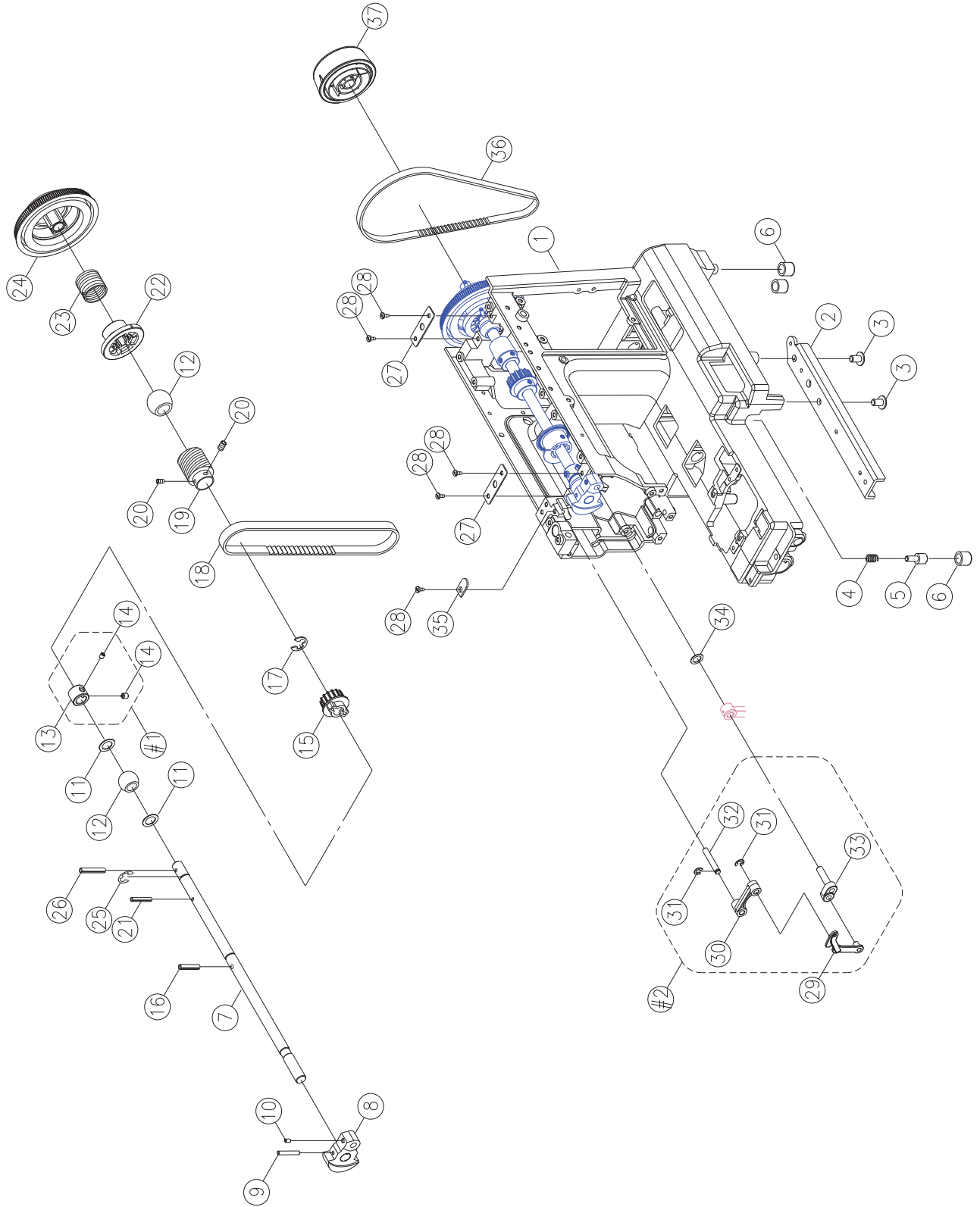




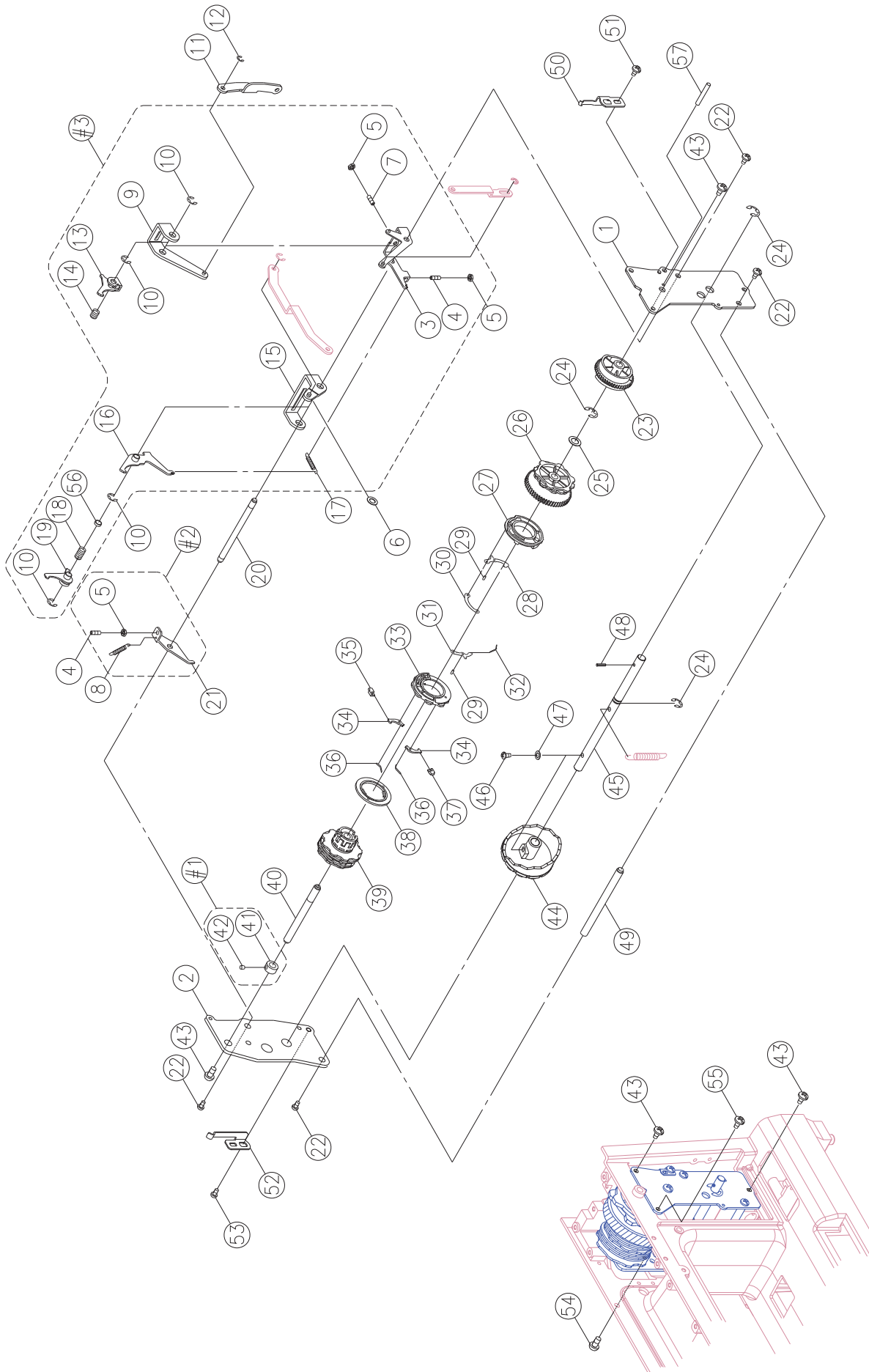
150S

Parts list

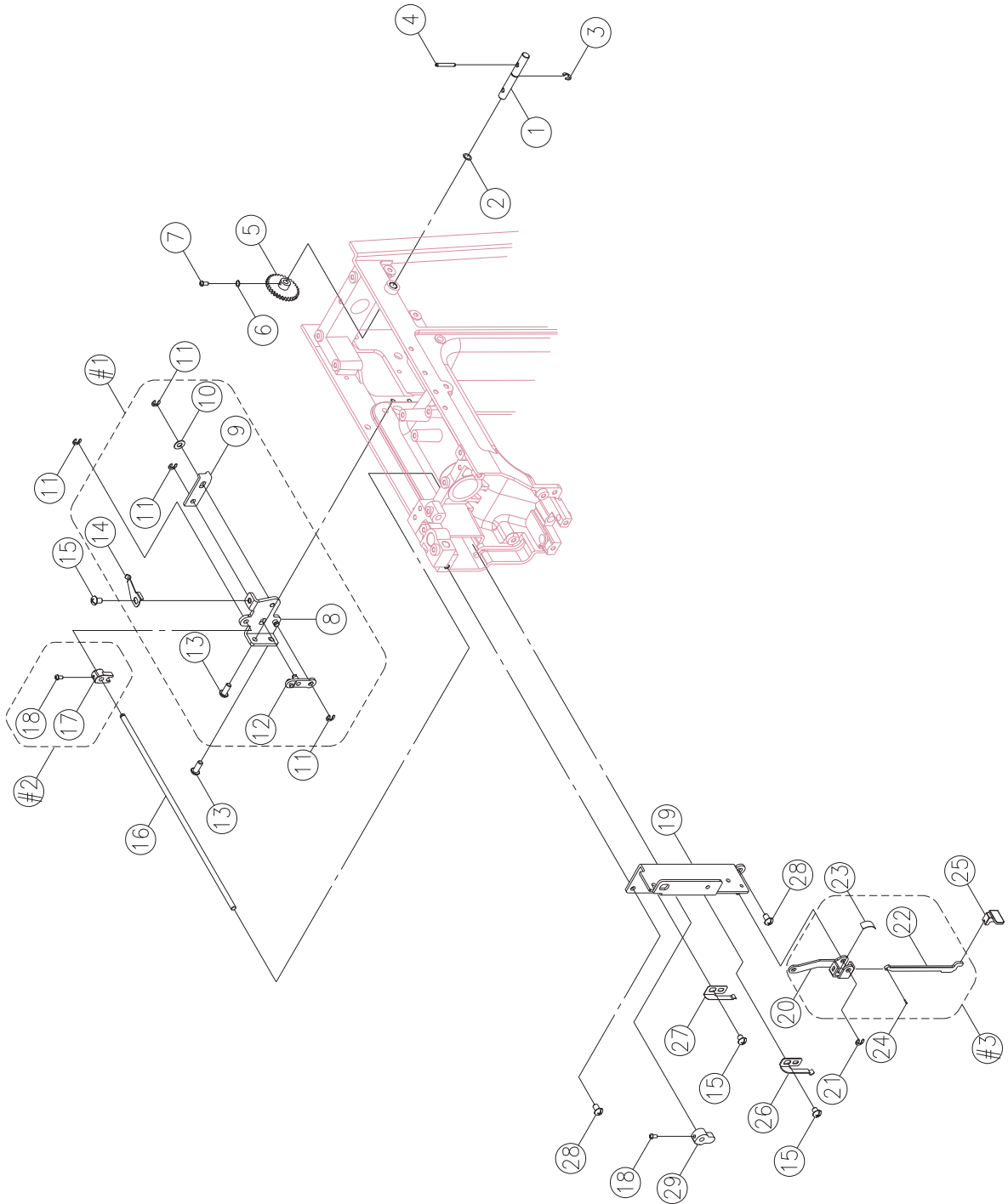
A



No.	Part No.	Description
2		FREE ARM FOOT
3		SET SCREW (M6×10)
4		SPRING
5		ADJUSTMENT SCREW
6	416526101	FREE ARM BASE CUSHION
7		ARM SHAFT
8		ARM SHAFT BALANCE
10		SCREW(M4×6 C)
12		ARM SHAFT BUSING
15	416680201	ARM SHAFT SPROCKET
16		SPRING PIN(□3×18)
17		E-RING (ETW-9)
18	416727301	MOTOR DRIVE BELT
19		ARM SHAFT WORM
20		SET SCREW(M4×4 C)
22		ARM SHAFT COLLAR
24	416680801	ARM SHAFT DRIVER BELT PULLEY
27		ARM SHAFT BUSHING HOLDER PLATE
28		SET SCREW(M4×8 A)
30	68002086	THREAD TAKE UP LEVER SUPPORTER
35		SET WASHER
36	416427701	MOTOR DRIVE BELT
37	68002877	HAND WHEEL COMPLETE FOR 150s
#1		ARM SHAFT COLLAR COMPLETE
#2	416765401	THREAD TAKE UP LEVER COMPLETE

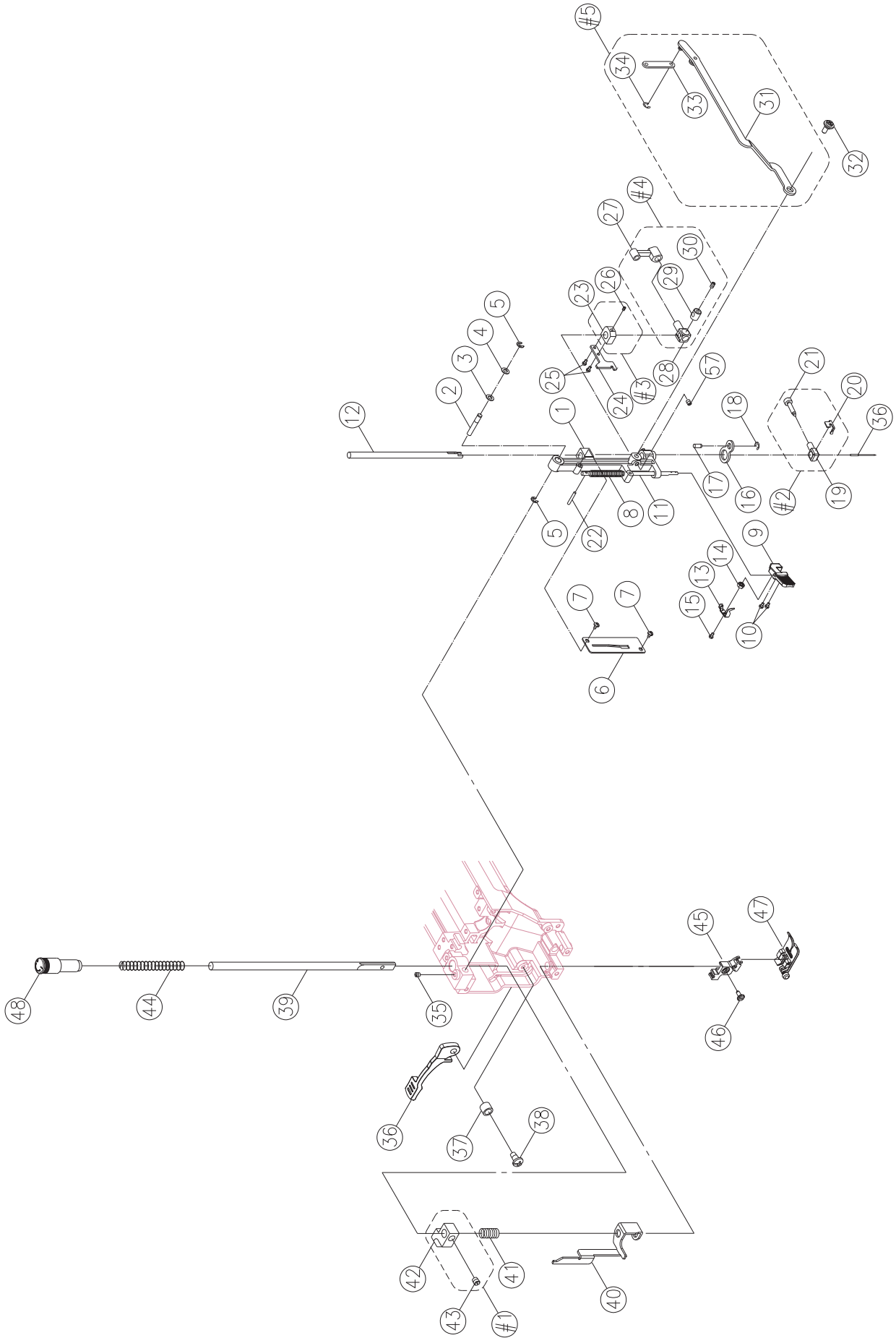


No.	Part No.	Description
12		E-RING (ETW-3)
22		SET SCREW (M3×8 B)
23	68003182	FEED REGULATOR CAM
24		E-RING□ETW-6□
25		WASHER(□8.2×□14×0.5)
26		SS CAM
29		BH CLUTCH SHAFT
32		BH CLUTCH SPRING PLATE
39	68003183	PATTERN CAM
43		SET SCREW (M4×8 A)
44		PATTERN SELECTOR CAM
45		PATTERN SELECTOR CAM SHAFT
47		WASHER (□4.2×□9×0.5)
48		SPRING PIN (□2.5×16)
53		SET SCREW(M4×5 B)
54		SET SCREW(M4×10 B)
55		SET SCREW(M4×8 B)
#1		PATTERN CAM SHAFT COLLAR COMPLETE
#2		ZIGZAG RELEASE PLATE COMPLETE
#3		BH ADJUST & ZIGZAG COMPLETE

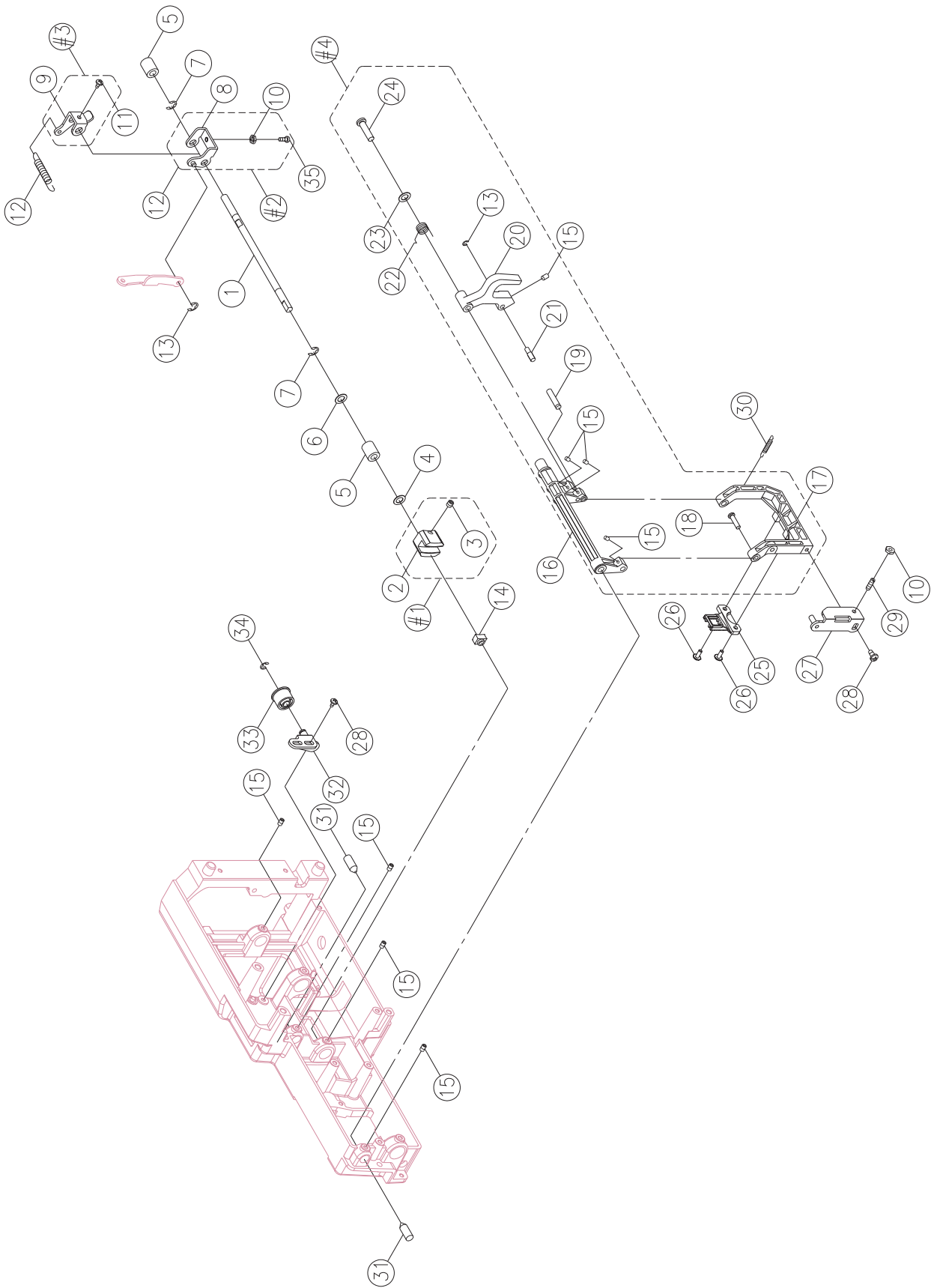


No.	Part No.	Description
1		FEED REGULATOR DIAL SHAFT
2		WASHER
3		E-RING (ETW-5)
4		SPRING PIN (?2.5×16)
5		FEED REGULATOR GEAR
6		WASHER (3.2×8×0.8)
7		SET SCREW (M3×8 B)
15		SET SCREW (M4×5 B)
16	68003185	BH SELECT CRANK SHAFT
19		BH LEVER PLATE COMPLETE
21		E-RING (ETW-3)
25		BH LEVER BUTTON
26		BH POSITIONED PLATE
28		SET SCREW(M4×8 A)
29		BH MOVEMENT CRANK
#1		BH SLIDE PLATE CPL
#2		BH SELECT CRANK COMPLETE
#3		BH LEVER CRANK COMPLETE

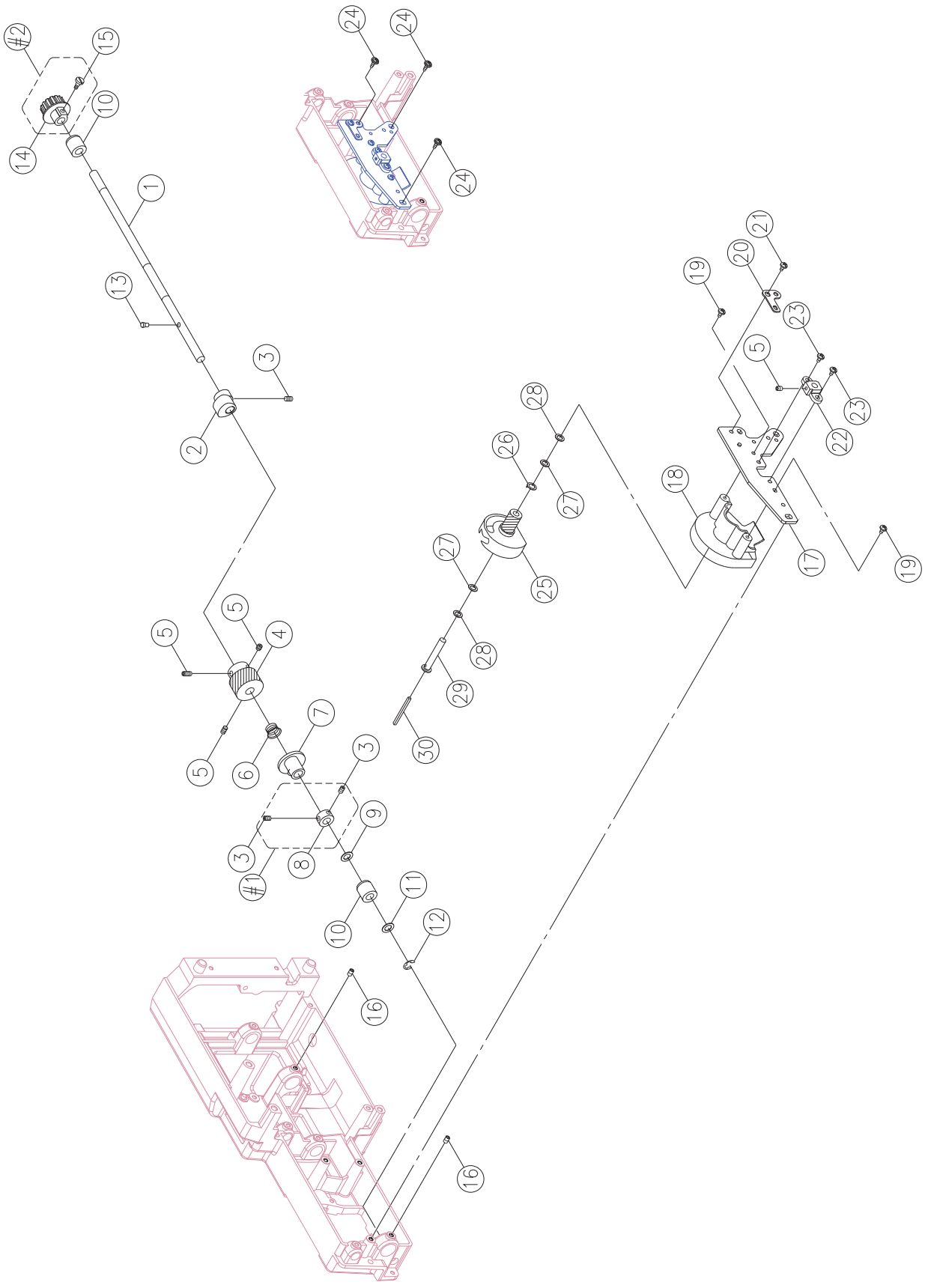
D



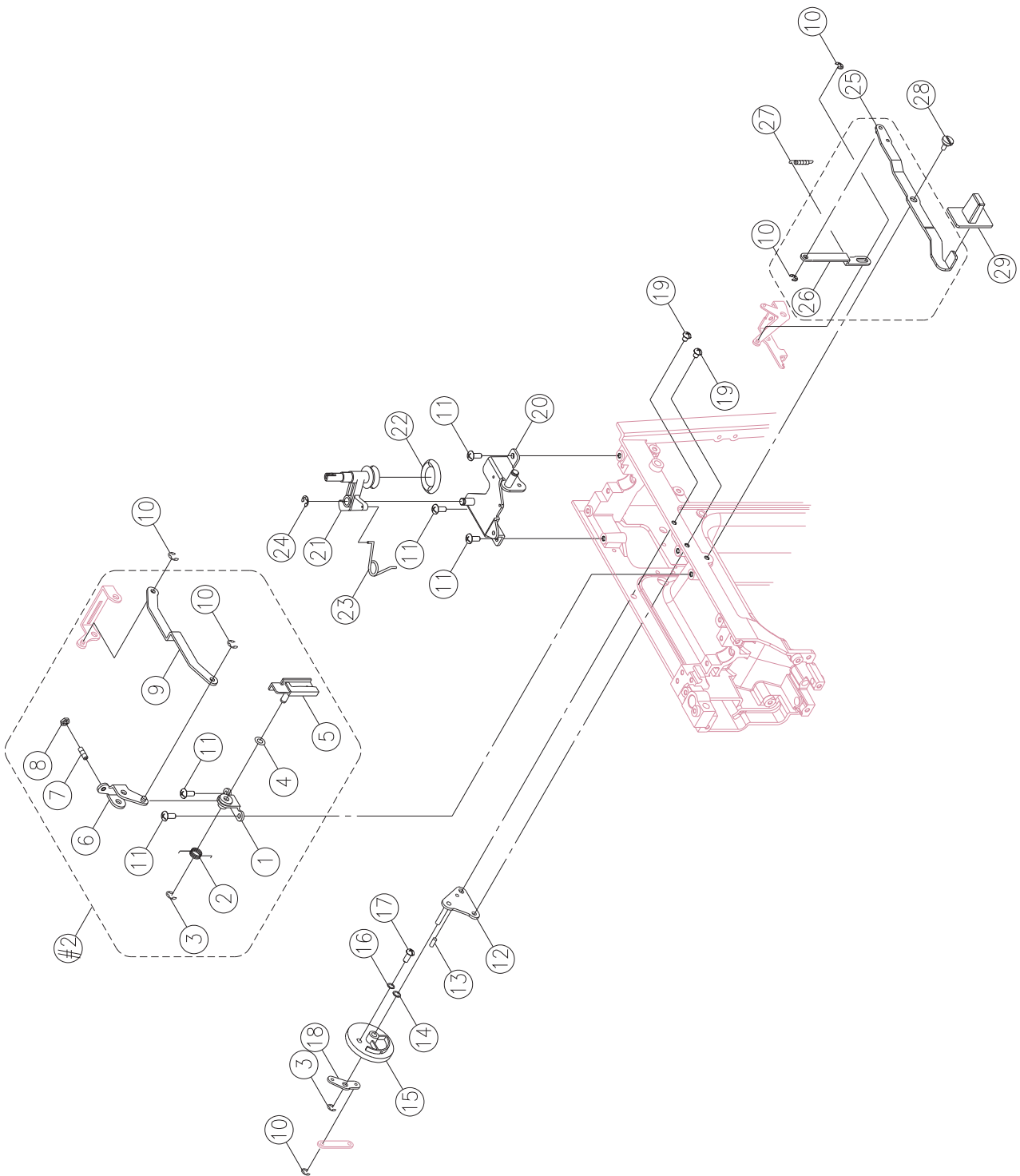
No.	Part No.	Description
1		NEEDLE BAR SUPPORTER
2		NEEDLE BAR SUPPORTER PIN
3		WASHER (WW-6)
6		THREADING GUIDE
7		SCREW (M3×6 A)
8		THREADING SHAFT SPRING
9	416580201	THREADING PLATE
10		SCREW (M2×4B)
12		NEEDLE BAR
13	416409701	NEEDLE HOOK COMPLETE
14		NUT (M2 T=1.6)
15		SCREW (M2×3.5)
16		NEEDLE BAR SUPPORTER
17		NEEDLE BAR SUPPORTER PIN
18		E-RING (ETW-4)
24		THREADING STOP HOLDER
25		SCREW (M2×4)
32		NEEDLE BAR DRIVING ROD PIN
35		SCREW(M4×5C)
36	416801301	PRESSER BAR LIFTER LEVER
37		PRESSER BAR LIFTER LEVER SCREW WASHER
38		SET SCREW (M4×10 B)
39		PRESSER BAR
44		PRESSER BAR SPRING
45	416477001	SHANK COMPLETE
46	416430601	SCREW
47	820258096	ALL PURPOSE FOOT
48		PRESSER BAR REGULATING SCREW
#1		PRESSER BAR BRACKET COMPLETE
#2	416613201	NEEDLE CLAMP COMPLETE
#3		THREADING STOPPER COMPLETE
#4	416235801	NEEDLE BAR CRANK ROD COMPLETE
#5		ZIGZAG WIDTH CRANK ROD COMPLETE



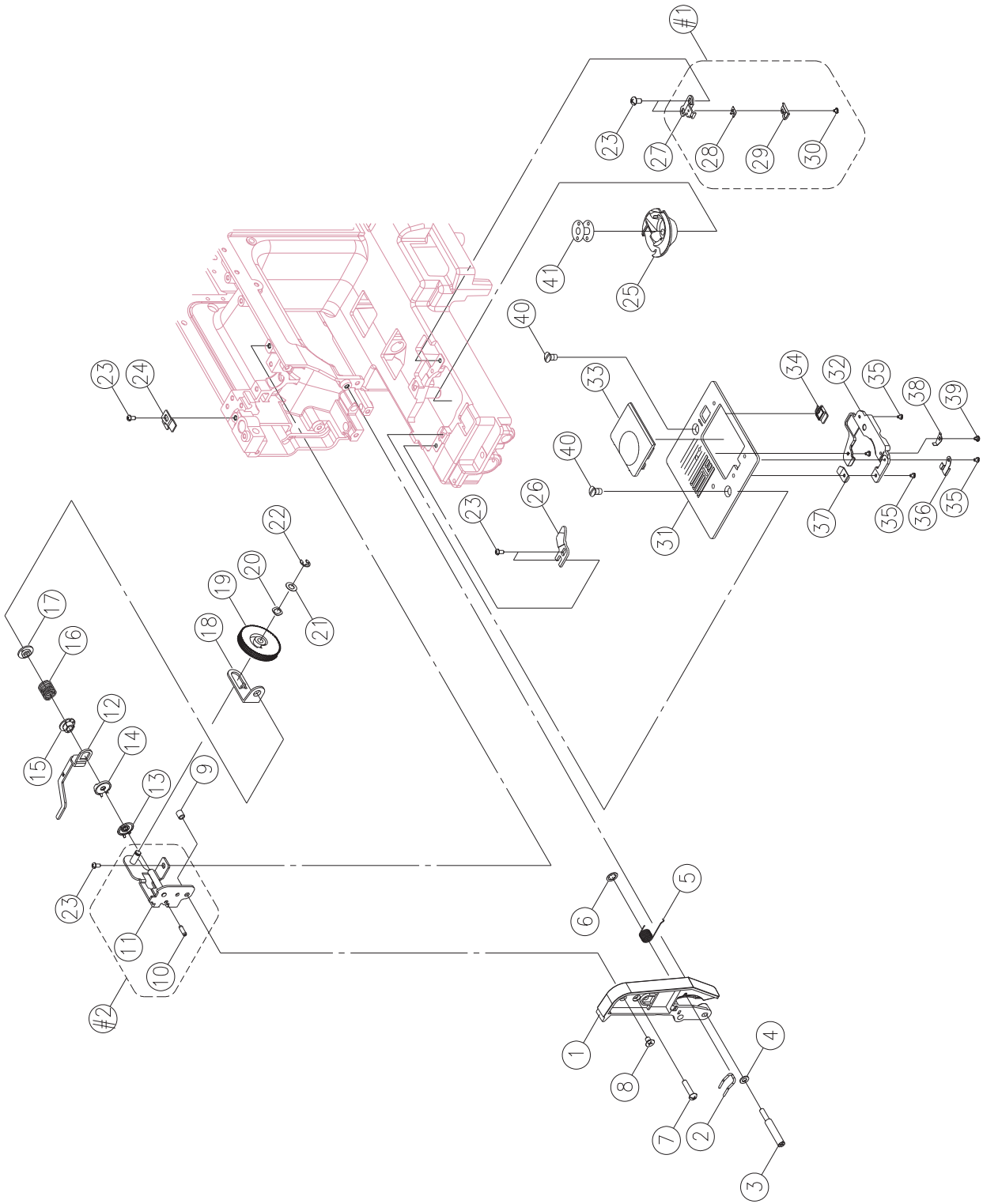
No.	Part No.	Description
2		FEED REGULATING
3		SET SCREW (M4×4 C)
4		WASHER(6.7×11.8×0.5)
5		FEED ROCK BUSHING
6		WASHER(6.7×12×1)
7		E-RING(ETW-5)
14	416149601	FEED REGULATING BLOCK
16		FEED ROCK SHAFT
25	68003195	FEED DOG
27		FEED LIFTING ROCK CRANK
28		SET SCREW(M4×8 A)
29		SET SCREW (M4×0.7 L9)
30	416631201	FEED DOG SPRING
31		FEED CRANK SHAFT
32		BELT ADJUSTING PLATE
33	416683901	BELT ADJUSTING PLATE PULLEY
34		E-RING (ETW-4)
#2		FEED REGULATING CRANK COMPLETE
#3		FEED CRANK COMPLETE
#4		FEED ROCK SHAFT COMPLETE



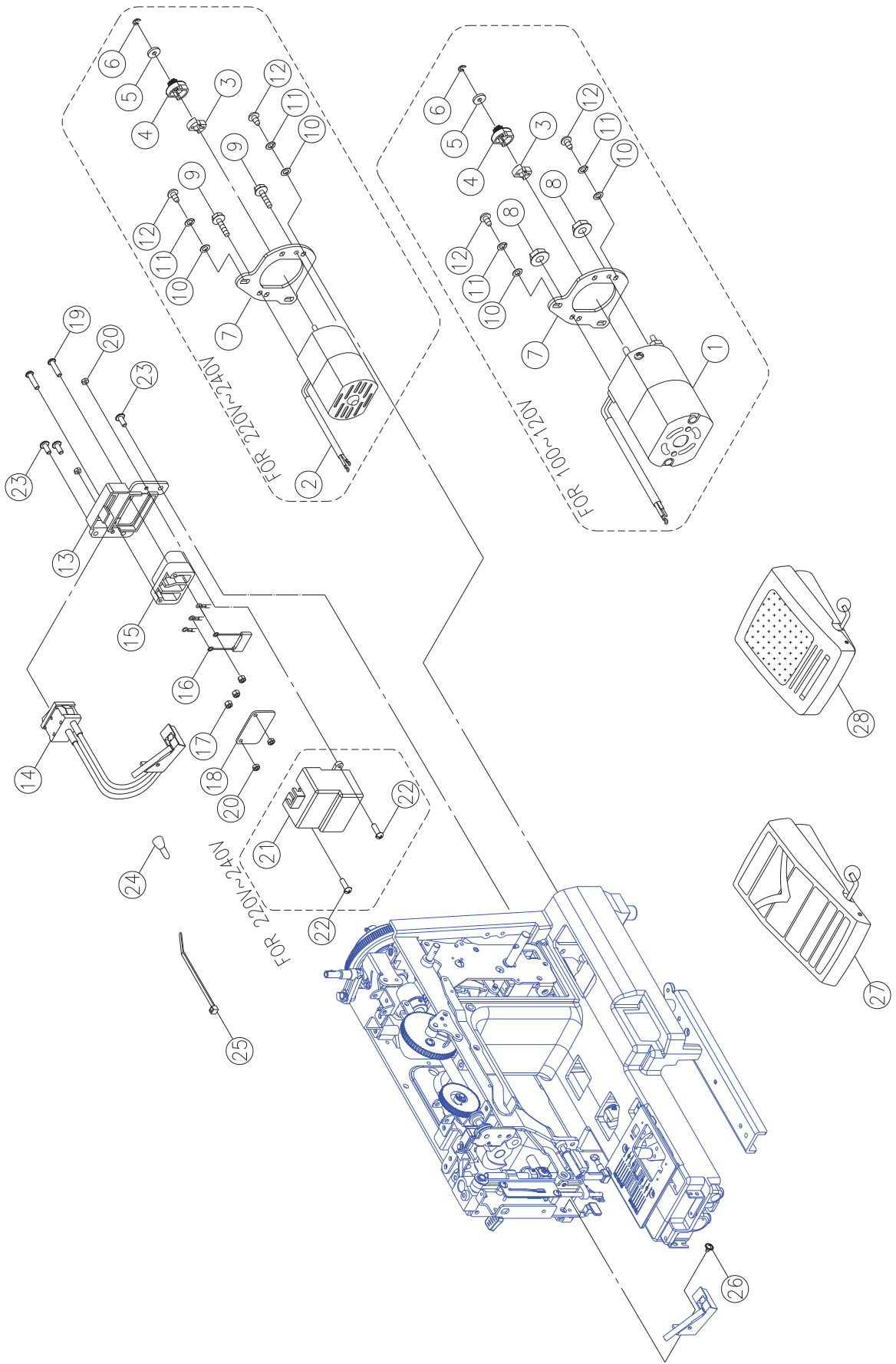
No.	Part No.	Description
2		FEED ROCK CAM
4	416197201	LOWER SHAFT GEAR
5		SET SCREW(M4×5 C)
6		LOWER SHAFT SPRING
7		FEED LIFTING ROCK CAM
9		ENDURE ATTRITION WASHER
10		LOWER SHAFT BUSHING
11		WASHER(8.2×12×0.5)
12		E-RING(ETW-6)
16		SET SCREW(M4×6 C)
18		NEEDLE PLATE COVER
19		SET SCREW(M3×12)
23		SET SCREW(M4×8 A)
25	416479801	SHUTTLE HOOK HOLDER
26		BOBBIN SHAFT WASHER (3)
27	416125901	ENDURE ATTRITION WASHER
28		BOBBIN SHAFT WASHER (2)
29	416145401	BOBBIN SHAFT
30	416155801	BOBBIN SHAFT OIL CLOTH
#1		LOWER SHAFT COLLAR COMPLETE
#2		LOWER SHAFT BELT PULLEY COMPLETE



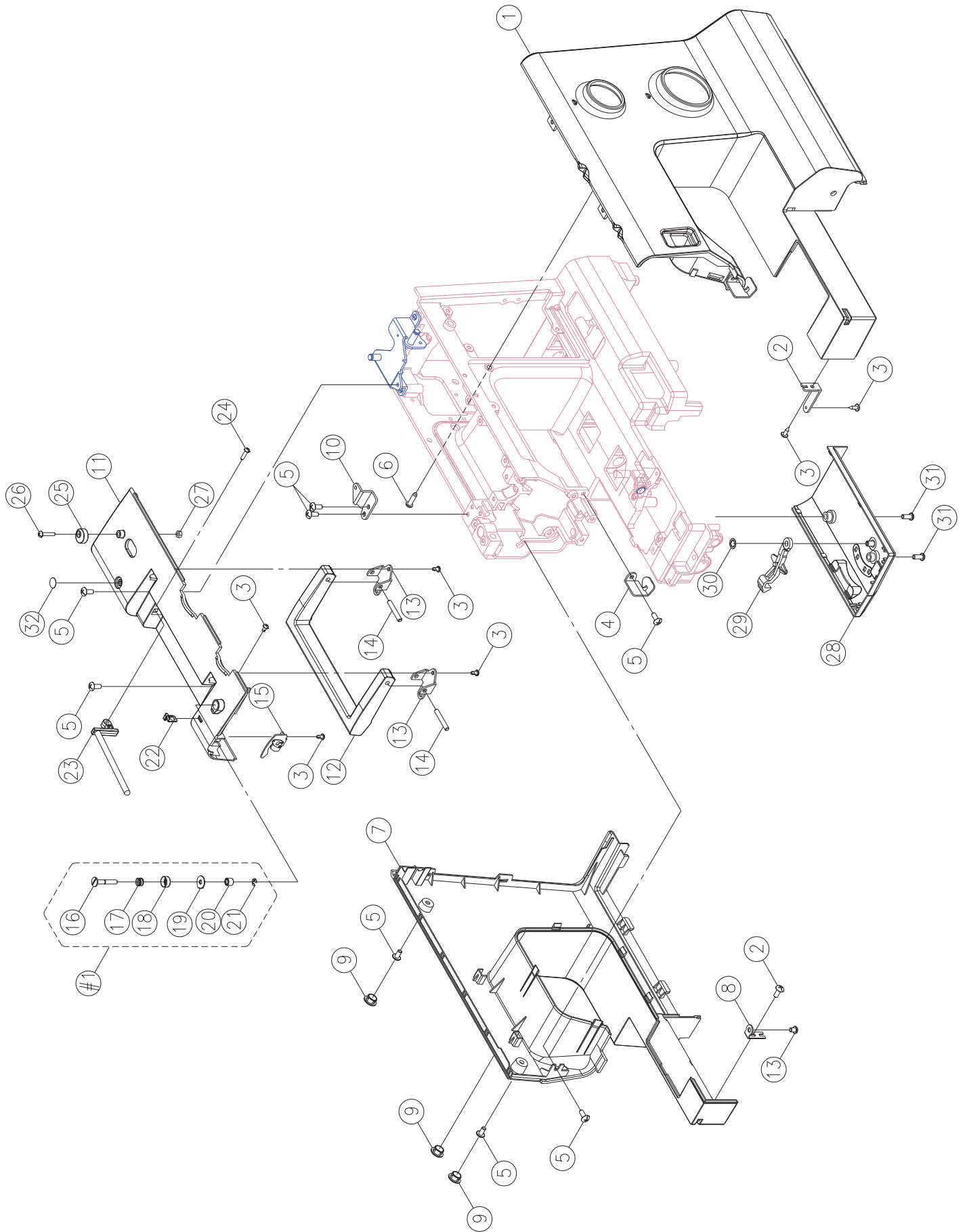
No.	Part No.	Description
14		WASHER
15		ZIGZAG WIDTH DIAL
16		WASHER (4.2×10×0.5)
17		SET SCREW (M4×10 B)
20		BOBBIN WINDER FRAME PLATE COMPLETE
21	416700601	BOBBIN WINDER CRANK COMPLETE
22	416149201	BOBBIN WINDER RUBBER PULLEY
24		E-RING (ETW-5)
27		AUTO THREADED LEVER SPRING
28		SET SCREW
29		REVERSE BUTTON
#1		REVERSE LEVER COMPLETE
#2		ZIGZAG REGULATOR CRANK COMPLETE



No.	Part No.	Description
1	68002879	DIAL TENSION SUP. PLATE COVER 150
2	416198701	THREAD GUIDE
4		WASHER (4.2×8×0.8)
5	416162601	THREAD GUIDE SPRING
6		CS-RING (CSTW-5)
8		SET SCREW (M4×6)
9		DIAL TENSION GUIDE SPRING TUBE
13	416153601	DIAL TENSION DISC (1)
14	416146301	DIAL TENSION DISC
15	416526801	DIAL TENSION SPRING REGULATOR
17	416153801	DIAL TENSION REGULATOR
19		DIAL TENSION KNOB 140/160
20		WASHER (WW-5)
22		E-RING □E-4 □
24		TENSION LEVER REGULATING PLATE
25	416827001	SHUTTLE HOOK COMPLETE
26	416144001	ROTARY HOOK PLATE
31		NEEDLE PLATE
32	416735401	NEEDLE PLATE SUPPORTER
33	416803401	NEEDLE PLATE COVER
34	416155201	NEEDLE PLATE COVER OPEN
36	416147501	NEEDLE PLATE SPRING
37		NEEDLE PLATE COVER PLATE
38	416315101	NEEDLE PLATE COVER SPRING
39		SET SCREW □M2.5×3 □
40	416122901	SET SCREW (M4×6)
41	68000175	BOBBIN
#1	416687801	ROTARY HOOK PLATE (2) COMPLETE
#2		DIAL TENSION SUP. PLATE CPL
#3	416803301	NEEDLE PLATE CPL.

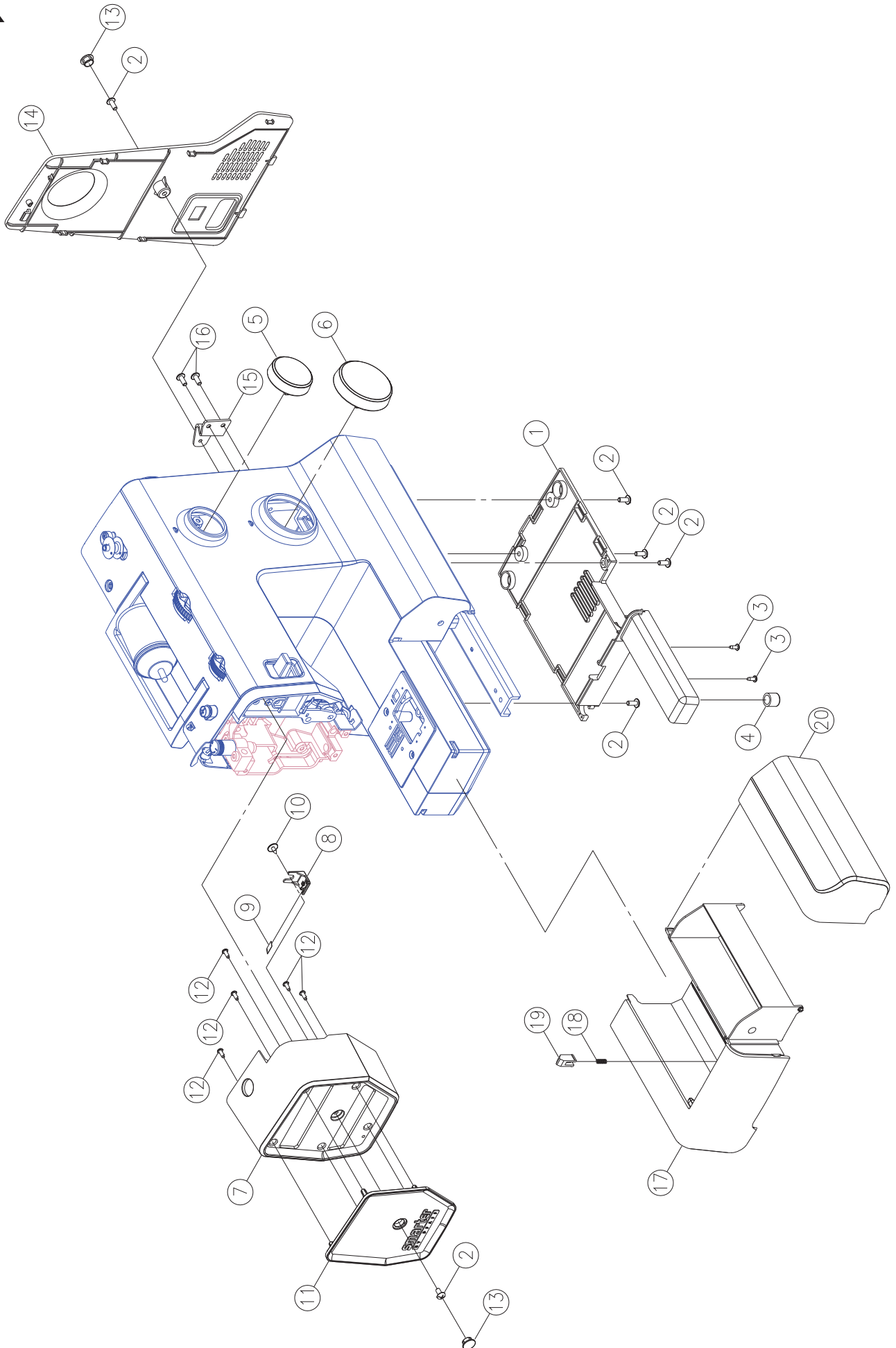


No.	Part No.	Description
1	416528001	MOTOR COMPLETE (HF-07150) US
2	416430001	MOTOR COMPLETE (HF-07250) EU
2	416528301	MOTOR COMPLETE (HF-07250) AU
3		CUSHION RUBBER
4		BELT WHEEL
5		BELT WHEEL COMPLETE
6		E-RING (ETW-3)
10		WASHER (5.4×10×0.9)
11		SPRING WASHER (5.2×9×1)
12		SET SCREW (M5×12)
14	416803501	LED HOLDER CPL 120V
14	416803601	LED HOLDER CPL 220-240V
15		RECEPTACLE
18		CONCERT INSULATION PLATE
19		SET SCREW (M3×20 B)
20		NUT (M3 T=2.3)
21		RECEPTACLE HOLDER COVER
22		SET SCREW (M3×8 B)
23		SET SCREW (M4×10 A)
25		CORD CLIP
26		SET SCREW (M3X5)
27	416183301	FOOT CONTROLLER (FC-1902A) US
28	416468201	FOOT CONTROLLER (FC-2902A) EU
28	416523901	FOOT CONTROLLER (KD-2902) AUS

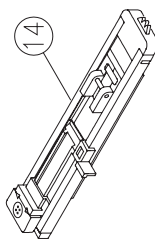
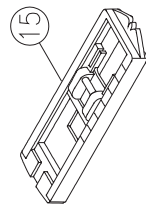
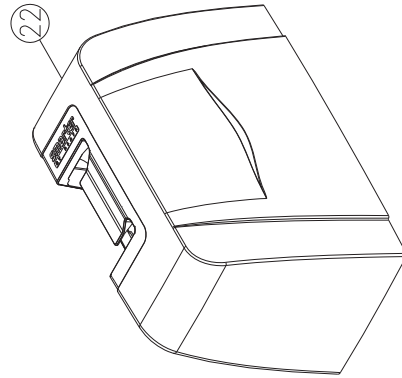
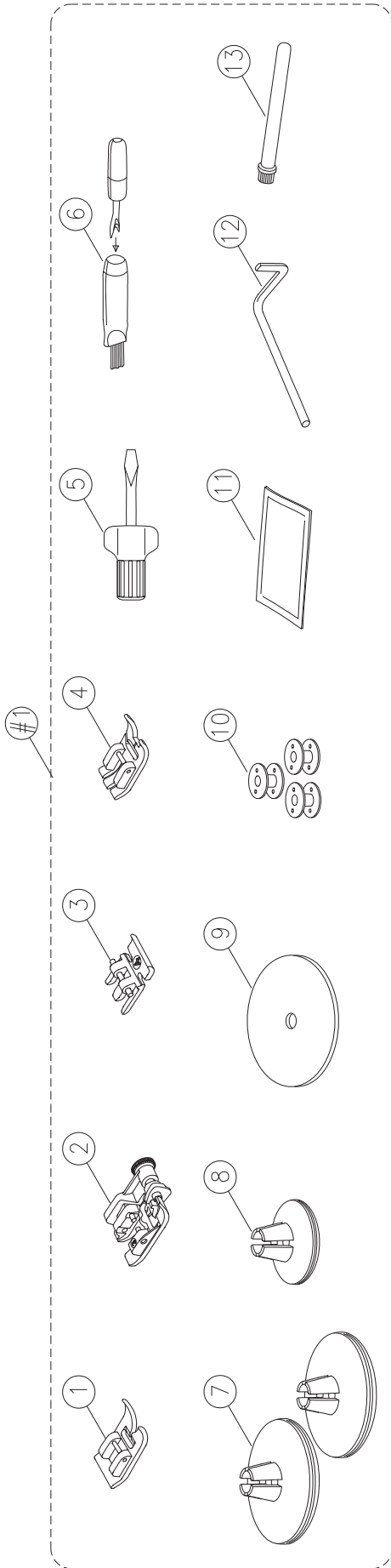


No.	Part No.	Description
1	68002881	FRONT COVER FOR 150s
2		ARM FRONT COVER SET PLATE
5		SET SCREW (M4×8 A)
7		BACK COVER
8		ARM BACK COVER SET PLATE
9	416482201	CAPS
11	68002883	ARM TOP COVER FOR 150s
12	416804401	HANDLE
13		HANDLE BRACKET
14		PIN
15	416469501	THREAD GUIDE COMPLETE
22	416804501	THREAD GUIDE
23	416804601	SPOOL PIN BASE
25	416554101	BOBBIN WINDER
26		SET SCREW (9/64×40×16)
27		NUT (9/64×40 T=3)
28		FREE ARM BASE
29		TOOTH LEVER ARM
30		CS-RING (CSTW-5)
31		SET SCREW (M4×10 B)
#1	416804901	BOBBIN WINDER THREAD GUIDE CPL

K



No.	Part No.	Description
1		FREE ARM FOOT BASE
2		SCREW (M4×8 A)
3		SCREW(M3×8)
4	416526101	FREE ARM BASE CUSHION
5	68002885	STITCH LENGTH DIAL CPL 150s
6	68002887	SELECTOR DIAL CPL150s
7	68002889	FACE PLATE 150s
8		FACE CUTTER PLATE
9	416172501	THREAD CUTTER
10		SCREW(M3×8)
11	68002891	FACE PANEL 150s
13	68002893	CAPS 150s
14	68002895	MOTOR DRIVE BELT COVER 150s
15		MOTOR DRIVE BELT COVER FRAME
16		SCREW (M4×6 D)
17		SEWING TABLE BODY
18	416424401	SEWING TABLE BODY GUIDE SPRING
19		SEWING TABLE BODY GUIDE
20		SEWING TABLE BODY COVER



No.	Part No.	Description
#1	416807101	ACCESSORY CPL PFAFF
1	820258096	ALL PURPOSE FOOT
2	820256096	BLIND HEM FOOT
3	820248096	ZIPPER FOOT
4	412850201	CLEAR VIEW FOOT
5	412381501	SCREWDRIVER
6	413190401	BRUSH/SEAM RIPPER
7	412371102	SPOOL HOLDER (LARGE)
8	412371101	SPOOL HOLDER (SMALL)
9	412610701	FELT PAD
10	68000175	BOBBIN
11	620098796	PACK OF NEEDLE
12	416483701	EDGE/QUILTING GUIDE
13	416806701	SPOOL PIN
14	416483201	BUTTONHOLE FOOT
22	68002897	HARD CASE CPL 150