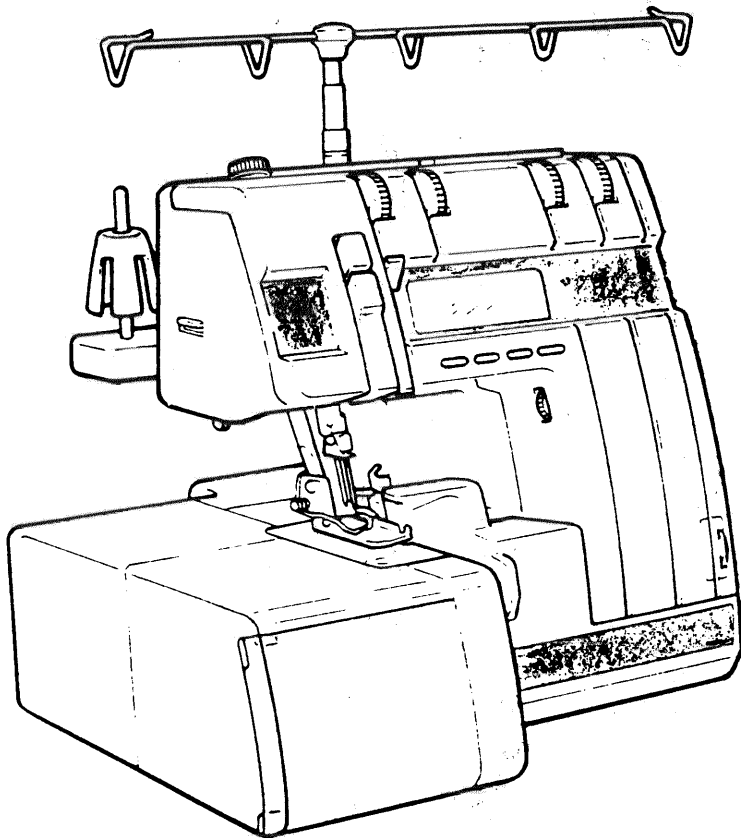
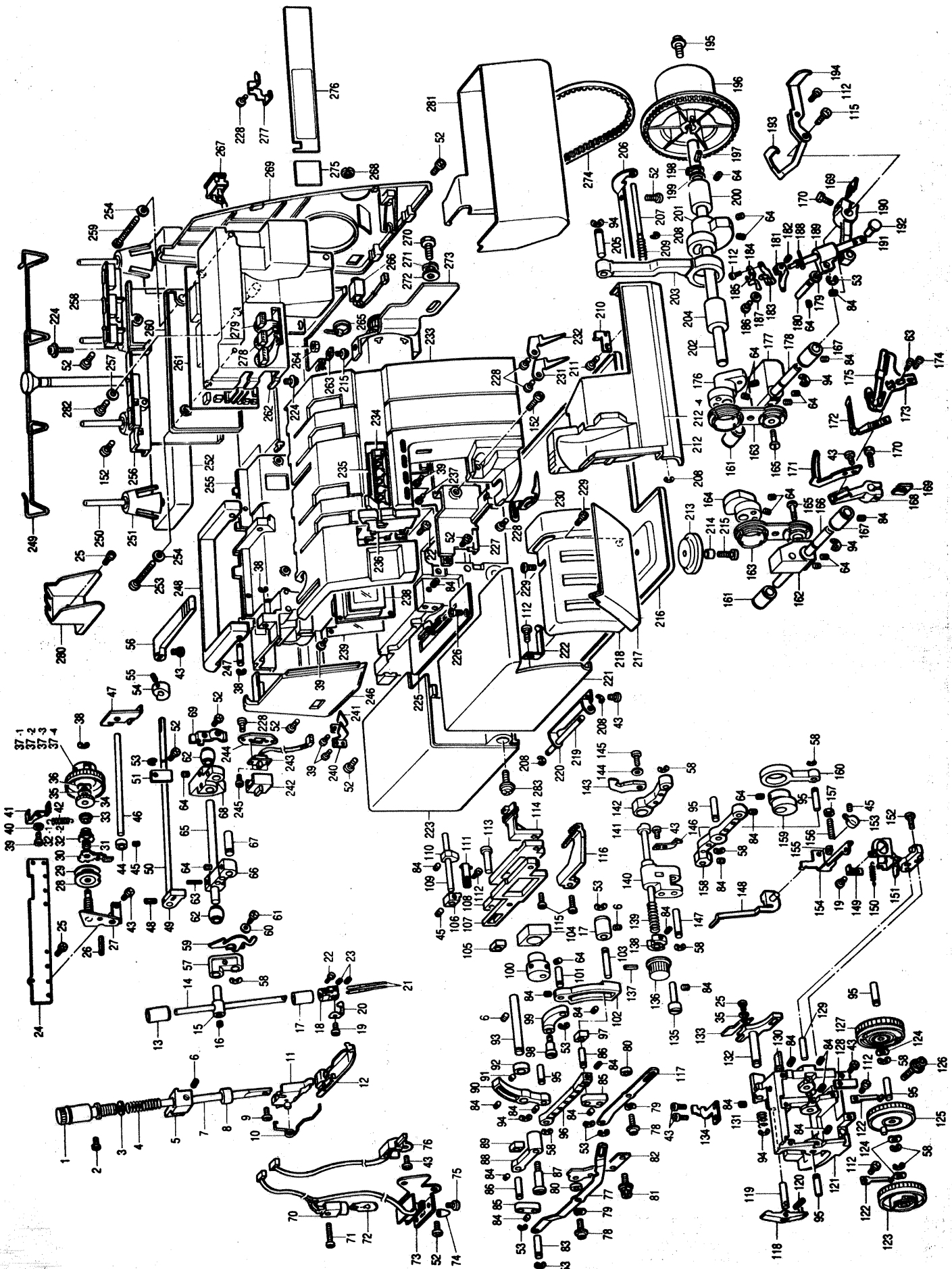


Spare parts
Ersatzteile
Pièces détachées
Reservdelar



HUSKYLOCK
660 CD

104 21 64-96



Pos	Part no	Description	Pos	Part no	Description	Pos	Part no	Description
1	415 45 68-01	Pressure adjustment dial	57	415 31 79-01	Needle bar link	117	415 46 50-01	Feed adjusting link C
2	415 45 69-01	Screw	58	415 31 87-01	Stop ring	118	415 46 51-01	Lower blade movable lever
3	415 45 70-01	Washer	59	415 46 09-01	Thread take-up	119	415 42 38-01	Lever holder shaft
4	415 45 71-01	Presser adjustment spring	60	415 30 98-01	Spring washer	120	415 42 40-01	Spring pin
5	415 41 57-01	Presser bar bracket	61	415 41 39-01	Screw	121	415 46 52-01	Needle plate base
6	415 41 58-01	Screw	62	415 41 30-01	Crank shaft bushing	122	415 46 53-01	Dial guide spring
7	415 41 56-01	Presser bar	63	415 46 10-01	Spring pin	123	415 46 54-01	Differential feed dial
8	415 41 59-01	Presser bar felt	64	415 32 03-01	Screw	124	415 46 55-01	Wave washer
9	415 30 34-01	Screw	65	415 46 11-01	Needle bar crank shaft	125	415 46 56-01	Feed dial
10	415 45 72-01	Presser foot spring	66	415 46 12-01	Needle bar crank	126	415 46 57-01	Screw
11	415 45 73-01	Presser foot holder assembly	67	415 41 36-01	Needle bar link shaft A	127	415 46 58-01	Lower blade dial assembly
12	415 45 74-01	Presser foot assembly	68	415 46 13-01	Needle bar driving lever	128	415 46 59-01	Control front cover spring
13	415 31 81-01	Needle bar bushing	69	415 41 34-01	Upper shaft bushing presser	129	415 46 60-01	Stud shaft
14	415 45 75-01	Needle bar	70	415 46 14-01	Sew-light assembly	130	415 46 61-01	Lower blade guide shaft
15	415 31 80-01	Needle bar connecting stud	71	415 46 15-01	Screw	131	415 42 42-01	Lower blade spring
16	415 45 76-01	Screw	72	415 34 39-01	Sew-light bulb	132	415 46 62-01	Lower blade holder
17	415 45 77-01	Needle bar bushing, lower	73	415 46 16-01	Sew-light plate	133	415 46 63-01	Lower blade
18	415 45 78-01	Needle clamp	74	415 41 72-01	Sew-light switch cap	134	415 46 64-01	Fixed needle guard
19	415 45 79-01	Screw	75	415 41 73-01	Screw	135	415 46 65-01	Upper blade holder guide shaft
20	415 45 80-01	Needle bar thread guide	76	415 47 64-01	Sensor assembly	136	415 46 66-01	Upper blade knob
21	401 60 92-01	Needles 5xNM80	77	415 46 17-01	Differential adjusting link C	137	415 46 67-01	Spring pin
22	415 42 69-01	Screw	78	415 44 39-01	Screw	138	415 46 68-01	Upper blade holder guide
23	415 45 81-01	Screw	79	415 45 12-01	Wave washer	139	415 46 69-01	Upper blade presser spring
24	415 45 82-01	Thread tension bracket	80	415 46 19-01	Spacer	140	415 46 70-01	Upper blade driving plate
25	415 30 99-01	Screw	81	415 46 20-01	Set screw	141	415 46 71-01	Upper blade holder
26	415 45 83-01	Spring pin	82	415 46 21-01	Material plate cover bracket	142	415 46 72-01	Upper blade arm
27	415 45 84-01	Thread tension base assembly	83	415 46 22-01	Adjusting link shaft	143	415 46 73-01	Upper blade
28	415 45 85-01	Thread tension disc A	84	415 32 14-01	Screw	144	415 33 05-01	Washer
29	415 43 52-01	Tension disc	85	415 46 23-01	Adjusting link	145	415 30 38-01	Screw
30	415 45 86-01	Thread tension releaser	86	415 46 24-01	Adjusting block shaft	146	415 46 74-01	Safety mechanism
31	415 45 87-01	Thread tension spring SL	87	415 46 25-01	Differential link shaft	147	415 46 75-01	Upper blade driving arm shaft
32.1	415 45 88-01	Thread tension spring	88	415 46 26-01	Differential adjusting link	148	415 46 76-01	Stitch assembly
32.2	415 45 89-01	Thread tension spring	89	415 46 27-01	Differential feed adjust. block	149	415 46 77-01	Stitch presser
33	415 45 90-01	Thread tension spring washer	90	415 46 28-01	Feed bar lever	150	415 46 78-01	Stitch spring
34	415 45 91-01	Thread tension nut	91	415 31 50-01	Screw	151	415 46 79-01	Stitch tongue holder assembly
35	415 45 92-01	Washer	92	415 41 31-01	Stop ring	152	415 45 04-01	Screw
36	415 45 93-01	Wave washer	93	415 46 29-01	Feed bar lever shaft	153	415 46 80-01	Stitch changing knob
37.1	415 45 94-01	Thread tension dial (yellow)	94	415 32 59-01	Stop ring	154	415 46 81-01	Stitch plate
37.2	415 45 95-01	Thread tension dial (red)	95	415 46 30-01	Feed bar link shaft	155	415 46 82-01	Stop ring
37.3	415 45 96-01	Thread tension dial (green)	96	415 46 31-01	Feed bar link	156	415 46 83-01	Screw
37.4	415 45 97-01	Thread tension dial (blue)	97	415 46 32-01	Feed adjusting block	157	415 42 09-01	N.L.C.
38	415 33 97-01	Stop ring	98	415 46 33-01	Feed eccentric wheel shaft	158	415 46 84-01	Upper blade driving arm
39	415 45 98-01	Tapping screw	99	415 46 34-01	Feed link	159	415 46 85-01	Upper blade eccentric wheel
40	415 45 99-01	Washer	100	415 46 35-01	Feed eccentric wheel	160	415 43 00-01	Upper blade link
41	415 46 00-01	Dial clutch	101	415 46 36-01	Feed link shaft	161	415 32 56-01	Looper lever shaft bush.
42	415 46 01-01	Clutch spring	102	415 46 37-01	Feed adjusting lever	162	415 46 86-01	Underlooper balance
43	415 41 49-01	Screw	103	415 46 38-01	Feed adjusting lever shaft	163	415 42 76-01	UL rod assembly
44	415 46 02-01	Thread tension release block	104	415 46 39-01	Vertical feed block	164	415 46 87-01	Underlooper rod eccentric wheel
45	728 52 17-05	Screw	105	415 46 40-01	Differential feed bar block	165	415 44 27-01	Looper rod stud shaft
46	415 46 03-01	Thread tension release shaft C	106	415 46 43-01	Feed bar guide, left	166	415 46 88-01	Underlooper lever shaft
47	415 46 04-01	Thread tension release plate	107	415 46 41-01	Differential feed bar	167	415 42 81-01	Looper lever shaft bush., front
48	415 46 05-01	Spring pin	108	415 46 42-01	Main feed bar	168	415 46 89-01	Underlooper lever
49	415 41 24-01	Presser lifter cam	109	415 46 44-01	Feed bar guide shaft	169	415 42 88-01	Washer
50	415 46 06-01	Presser lifter shaft	110	415 46 45-01	Needle plate supporting collar	170	415 46 90-01	Looper lever fixing screw
51	415 41 26-01	Shaft presser	111	415 46 46-01	Feed bar guide, right	171	415 46 91-01	Needle guard plate
52	415 45 09-01	Screw	112	415 34 73-01	Screw	172	415 46 92-01	Underlooper
53	415 32 64-01	Stop ring	113	415 46 47-01	Feed bar shaft	173	415 46 93-01	Underlooper thread guide base
54	415 46 07-01	Tension release cam	114	415 46 48-01	Main feed dog	174	415 42 83-01	Screw
55	415 41 22-01	Screw	115	415 31 23-01	Screw	175	415 46 94-01	UL thread guide slide assembly
56	415 46 08-01	Presser foot lever	116	415 46 49-01	Differential feed dog	176	415 46 95-01	Overlooper rod eccentric wheel

Pos	Part no	Description	Pos	Part no	Description
177	415 46 96-01	Overlooper balance	233	415 47 68-01	Panel assembly (230-232,240,277)
178	415 46 97-01	Overlooper lever shaft	234	415 47 69-01	LCD switch
179	415 45 16-01	Washer	235	415 47 70-01	Key base assembly
180	415 32 63-01	OL guide shaft	236	415 47 32-01	Take-up lever cover
181	415 34 28-01	Over looper	237	415 47 71-01	Tapping screw
182	415 46 98-01	Screw	238	415 47 72-01	LCD base assembly
183	415 46 99-01	Looper change base	239	415 47 73-01	Insulation sheet
184	415 47 00-01	Looper change spring	240	415 47 33-01	Needle thread guide, left
185	415 47 01-01	Looper change cam	241	415 47 34-01	Needle thread guide, right
186	415 47 02-01	Screw	242	415 47 74-01	Switch knob
187	415 47 03-01	Washer	243	415 47 75-01	Speed control switch assembly
188	415 34 82-01	Over looper thread guide	244	415 47 76-01	Switch holder
189	415 47 04-01	Overlooper shaft guide	245	415 41 73-01	Screw
190	415 31 04-01	Overlooper shaft lever	246	415 47 77-01	Sew-light cover assembly
191	415 47 05-01	Overlooper shaft	247	415 43 65-01	Handle shaft
192	415 30 56-01	Overlooper lower shaft	248	415 47 36-01	Handle
193	415 47 06-01	Looper thread take-up lever	249	415 34 36-01	Spool stand assembly
194	415 47 07-01	UL thread take-up lever	250	415 33 23-01	Spool pin
195	415 47 08-01	Screw	251	415 30 17-01	Spool cushion
196	415 43 09-01	Handwheel	252	415 34 37-01	Spool stand base
197	415 43 08-01	Spring pin	253	415 43 94-01	Screw
198	415 32 72-01	Stop ring	254	415 43 95-01	Washer
199	415 32 71-01	Washer	255	415 47 38-01	Rear cover assembly
200	415 32 70-01	Driving shaft bushing, right	257	415 43 91-01	Insulation washer
201	415 47 09-01	Needle bar eccentric wheel	258	415 47 39-01	Thread rectifier body assembly
202	415 47 10-01	Driving shaft	259	415 43 93-01	Screw
203	415 43 02-01	Needle bar rod	260	415 47 78-01	Insulation cover plate
204	415 43 01-01	Driving shaft bushing, left	261	415 47 79-01	PC-board
205	415 43 03-01	Needle bar rod shaft	262	415 47 80-01	Insulation cover
206	415 47 11-01	Front cover hinge	263	415 33 15-01	Nut
207	415 44 63-01	Front cover guide shaft	264	415 43 89-01	Nut
208	415 32 98-01	Stop ring	265	415 43 78-01	Band
209	415 32 96-01	Spring	266	415 47 81-01	Jack assembly
210	415 44 68-01	Front cover hook	267	415 47 82-01	Jack assembly (Germany)
211	415 44 59-01	Screw	268	415 47 83-01	Inlet switch assembly
212	415 47 12-01	Front cover assembly (206-212)	268	415 43 80-01	Jack nut
212.1	415 47 13-01	Front cover	269	415 47 84-01	Belt cover E
212.2	415 47 14-01	Blade cover	270	415 33 28-01	Screw
212.3	415 47 15-01	Thread guide control plate	271	415 43 83-01	Spring washer
212.4	415 47 65-01	Front cover plate	272	415 33 26-01	Washer
213	415 34 33-01	Cushion A	273	415 48 68-01	Motor (230 V)
214	415 44 02-01	Spacer	274	415 47 50-01	Timing belt
215	415 45 06-01	Screw	275	415 47 51-01	Panel plate sheet, left
216	415 47 17-01	Oil pan	276	415 47 89-01	LCD sheet
217	415 47 66-01	Control front cover	277	415 47 53-01	Needle thread guide H
218	415 47 67-01	Control cover plate	278	415 47 90-01	Lead wire assembly #1
219	415 47 20-01	Material pl. cover hinge shaft	279	415 47 91-01	Lead wire assembly #2
220	415 47 21-01	Material plate cover hinge	280	415 47 92-01	Cord cover
221	415 47 22-01	Material plate front cover	281	415 47 49-01	Dust box
222	415 47 23-01	Material plate cover spring	282	415 41 67-01	Screw
223	415 47 24-01	Material plate cover B	283	415 47 54-01	Screw
224	415 45 08-01	Screw	415 34 44-01	Foot control	
225	415 47 25-01	Needle plate assembly	415 48 66-01	Power cord Europe	
226	415 30 37-01	Screw	415 48 67-01	Power cord U.K.	
227	415 47 26-01	Inner cover assembly			
228	415 47 27-01	Tapping screw			
229	415 44 21-01	Screw			
230	415 47 28-01	Panel looper thread guide			
231	415 47 29-01	Overlooper thread guide			
232	415 47 30-01	Underlooper thread guide			

ACCESSORIES

- 415 47 55-01 Accessory box without access.
- 415 44 06-01 Screwdriver
- 412 28 90-01 Screwdriver small
- 415 44 07-01 Pincette
- 415 30 13-01 Machine brush
- 415 44 10-01 Spool cap
- 415 30 15-01 Spool net
- 415 44 12-01 Oiler

OPTIONAL PRESSER FEET

- 415 47 60-01 Blind stitch presser foot
- 415 47 61-01 Pearl sequence presser foot
- 415 47 62-01 Piping presser foot
- 415 47 63-01 Elastic presser foot

OPERATING MANUALS

- 412 39 98-05 Operating manual SWE/FIN
- 412 39 98-15 Operating manual DAN/NOR
- 412 39 98-25 Operating manual FRENCH/DUTCH
- 412 39 98-26 Operating manual English
- 412 39 98-35 Operating manual GER/ITA

SERVICE TOOL

- 415 48 65-01 Service gauge