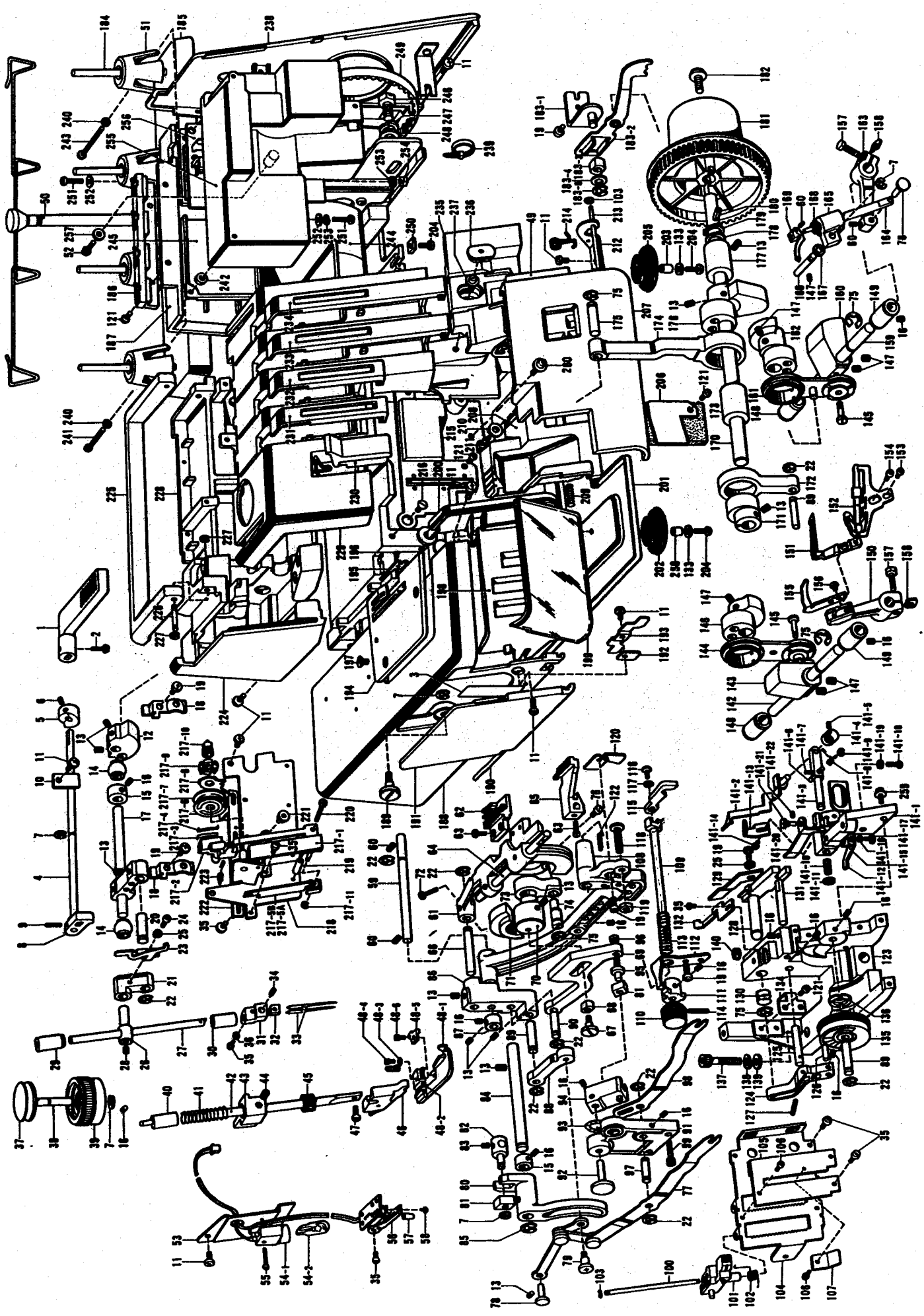


RESERVDELAR

HUSKYLOCK M560 D

*W4*



POS	NR	BENAMING	POS	NR	BENAMING	POS	NR	BENAMING
2	415 44 21-01	Presser foot lever	89	415 42 02-01	Link shaft	136	415 42 47-01	Spring
3	415 44 22-01	Set screw	90	415 42 03-01	Horizontal feed	137	415 42 48-01	Set screw
4	415 41 20-01	Sticker	91	415 42 04-01	Feed change lever	138	415 42 49-01	Spring washer
5	415 41 21-01	Presser bar lifter	92	415 42 05-01	Feed change lever bracket	139	415 42 50-01	Washer
6	415 41 22-01	shaft	93	415 42 06-01	Stud shaft	140	415 42 51-01	Cap
7	415 41 23-01	Tension release cam	94	415 42 07-01	Slide block guide			
8	415 41 24-01	Set screw	95	415 42 08-01	Slide block stud			
9	415 41 25-01	Stop ring	96	415 42 09-01	Nut			
10	415 41 26-01	Presser lift cam	97	415 42 10-01	Feed change lever shaft			
11	415 41 27-01	Spring pin	98	415 42 11-01	Feed change lever shaft			
12	415 41 28-01	Set screw	99	415 42 12-01	Feed change lever shaft			
13	415 41 29-01	Needle bar driving lever	100	415 42 13-01	Feed adjusting knob shaft			
14	415 41 30-01	Set screw	101	415 42 14-01	Control lever			
15	415 41 31-01	Crank shaft bushing	102	415 42 15-01	Control lever shaft			
16	415 41 32-01	Collar	103	415 42 16-01	Spring			
17	415 41 33-01	Set screw	104	415 42 17-01	Stop ring			
18	415 41 34-01	Needle bar crank shaft assembly	105	415 42 18-01	Control panel base plate			
19	415 41 35-01	Shaft	106	415 42 19-01	Control panel base cover			
20	415 41 36-01	Set screw	107	415 42 20-01	Set screw			
21	415 41 37-01	Needle bar link A shaft	108	415 42 21-01	Set screw			
22	415 41 38-01	Needle bar link A stop ring	109	415 42 22-01	Upper blade holder			
23	415 41 39-01	Thread take-up	110	415 42 23-01	Upper blade knob			
24	415 41 40-01	Set screw	111	415 42 24-01	Upper blade holder guide			
25	415 41 41-01	Washer	112	415 42 25-01	Guide plate			
26	415 41 42-01	Needle bar connecting stud	113	415 42 26-01	Spring			
27	415 41 43-01	Needle bar bushing, upper	114	415 42 27-01	Spring pin			
28	415 41 44-01	Needle bar bushing, lower	115	415 42 28-01	Upper blade shaft			
29	415 41 45-01	Needle clamp	116	415 42 29-01	Set screw			
30	415 41 46-01	Nut	117	415 42 30-01	Washer			
31	415 41 47-01	Needle 14	118	415 42 31-01	Set screw			
32	415 41 48-01	Set screw	119	415 42 32-01	Nut			
33	415 41 49-01	Spring washer	120	415 42 33-01	Stitch stopper			
34	415 41 50-01	Pressure adjustment dial plate	121	415 42 34-01	Set screw			
35	415 41 51-01	Pressure adjustment stud	122	415 42 35-01	Spring pin			
36	415 41 52-01	Pressure adjustment dial	123	415 42 36-01	Needle plate base			
37	415 41 53-01	Pressure adjustment bush	124	415 42 37-01	Lower blade movable lever			
38	415 41 54-01	Presser bar spring	125	415 42 38-01	Lever shaft			
39	415 41 55-01	Presser bar	126	415 42 39-01	Pin			
40	415 41 56-01	Presser bar bracket	127	415 42 40-01	Spring pin			
41	415 41 57-01	Set screw	128	415 42 41-01	Lower blade holder			
42	415 41 58-01	Felt	129	415 42 42-01	Lower blade			
43	415 41 59-01	Presser foot holder assembly	130	415 42 43-01	Lower blade guide shaft			
44	415 42 00-01		131	415 42 44-01	Needle guard			
45	415 42 01-01		132	415 44 26-01	Washer			
46	415 42 02-01		133	415 42 45-01	Feed bar guide			
47	415 42 03-01		134	415 42 46-01	Stitch width control dial			
48	415 42 04-01		135	415 42 47-01				
49	415 42 05-01							
50	415 44 24-01	Spool stand asse.						
51	415 44 25-01	Spool cushion						
52	415 41 67-01	Set screw						
53	415 41 68-01	Saw-light plate						
54-1	415 41 69-01	Light holder assembly						
55	415 41 70-01	Saw-light bulb						
56	415 41 71-01	Saw-light switch holder						
57	415 41 72-01	Saw-light switch cap						
58	415 41 73-01	Set screw						
59	415 41 74-01	Feed shaft						
60	415 41 75-01	Set screw						
61	415 41 76-01	Feed bar						
62	415 41 77-01	Main feed dog						
63	415 41 78-01	Set screw						
64	415 41 79-01	Differential feed lever shaft						
65	415 41 80-01	Differential feeddog						
66	415 41 81-01	Feed bar shaft						
67	415 41 82-01	Stud screw						
68	415 41 83-01	Slide block						
69	415 41 84-01	Horizontal feedlever						
70	415 41 85-01	Feed eccentric wheel						
71	415 41 86-01	Feed eccentric wheel balance						
72	415 41 87-01	Set screw						
73	415 41 88-01	Vertical feed lever						
74	415 41 89-01	Vertical adjusting shaft						
75	415 41 90-01	Stop ring						
76	415 41 91-01	Set screw						
77	415 41 92-01	Differential feed change lever assembly						
78	415 41 93-01	Stud shaft						
79	415 41 94-01	Stud screw						
80	415 41 95-01	Differential feed lever						
81	415 41 96-01	Slide block						
82	415 41 97-01	Slide block stud						
83	415 41 98-01	Set screw						
84	415 41 99-01	Differential feed lever shaft						
85	415 41 00-01	Stop ring						
86	415 42 01-01	Feed bar lever						
87	415 42 02-01	Collar						
88	415 42 03-01	Differential feed link						

POS	NR	BENAMING	POS	NR	BENAMING	POS	NR	BENAMING
163	415 42 93-01	Over looper shaft lever	206	415 43 34-01	Dust cover	239	415 43 78-01	Band
164	415 42 94-01	Over looper shaft	207	415 43 35-01	Front cover	240	415 44 32-01	Washer
165	425 42 95-01	Over looper shaft guide	208	415 43 36-01	Front cover guide	241	415 44 33-01	Set screw
166	415 42 96-01	Guide shaft	209	415 43 37-01	Spring	242	415 44 34-01	Washer
167	415 42 97-01	Washer	210	415 43 38-01	Washer	243	415 44 35-01	Set screw
168	415 42 98-01	Over looper thread guide	211	415 43 39-01	Set screw	244	415 44 36-01	Insulation cover plate
169	415 42 99-01	Over looper	212	415 43 40-01	Front cover hinge	245	415 44 37-01	Set screw
170	415 42 98-01	Driving shaft	213	415 43 41-01	Hinge shaft	246	415 43 82-01	Set screw
171	415 42 99-01	Upper blade eccentric wheel	214	415 43 42-01	Spring	247	415 43 83-01	Spring washer
172	415 43 00-01	Upper blade link	215	415 43 43-01	Thread take-up lever cover	248	415 43 84-01	Washer
173	415 43 01-01	Driving shaft bushing, left	216	415 43 44-01	Set screw	249	415 43 85-01	Timing belt
174	415 43 02-01	Needle bad rod	217-1	415 43 45-01	Thread tension plate	250	415 43 85-01	Nut
175	415 43 03-01	Rod shaft	217-2	415 43 46-01	Thread tension lever	251	415 43 86-01	Set screw
176	415 43 04-01	Needle bar connecting wheel assembly	217-3	415 43 47-01	Spring	252	415 43 87-01	Washer
177	415 43 05-01	Driving shaft bushing, right	217-4	415 43 48-01	Lever slide plate	253	415 43 88-01	Spring washer
178	415 43 06-01	Washer	217-5-A	415 43 49-01	Tension spring	254	415 43 89-01	Nut
179	415 43 07-01	Stop ring	217-5-B	415 43 50-01	Tension spring	255	415 43 90-01	Insulation cover assembly
180	415 43 08-01	Spring pin	217-6	415 43 51-01	Tension disc, A	257	415 43 91-01	Insulation washer
181	415 43 09-01	Handwheel	217-7	415 43 52-01	Tension disc	258	415 44 37-01	Spacer collar
182	415 43 10-01	Set screw	217-8	415 43 53-01	Tension releaser	259	415 44 38-01	Set screw
183-1	415 43 11-01	Thread take-up lever bracket	217-9	415 43 54-01	Nut	260	415 44 39-01	Set screw
183-2	415 43 12-01	Looper thread take-up lever	217-10	415 43 55-01	Tension presser bolt	-	415 44 05-01	Vinyl bag for accessories
183-3	415 43 13-01	Slide block	217-11	415 43 56-01	Stop ring	-	415 44 06-01	Screw driver
183-4	415 43 14-01	Washer	218	415 43 57-01	Thread tension bracket	-	415 44 07-01	Needle case
183-5	415 43 15-01	Stop ring	219	415 43 58-01	Spacer collar	-	415 44 09-01	Machine brush
184	415 44 28-01	Spool pin	220	415 43 59-01	Set screw	-	415 44 10-01	Spool cap
185	415 44 29-01	Spool stand base	221	415 43 60-01	Nut	-	415 44 11-01	Wrench
186	415 44 30-01	Thread rectifier body	222	415 43 61-01	Tension release	-	415 44 12-01	Oiler
187	415 44 31-01	Rear cover	223	415 43 62-01	Spring	-	415 44 13-01	Thread net
188	415 43 19-01	Material plate cover	224	415 43 63-01	Sew-light cover	-	415 44 14-01	Instruction sheet
189	415 43 20-01	Material plate cover set screw	225	415 43 64-01	Handle	-	415 44 15-01	Machine cover
190	415 43 21-01	Side cover shaft	226	415 43 65-01	Handle shaft	-	415 44 16-01	Machine cover
191	415 43 22-01	Side cover	227	415 43 66-01	Stop ring	-	415 44 17-01	Controller
192	415 43 23-01	Shaft presser	228	415 43 67-01	Machine body	-	415 44 18-01	Instruction book
193	415 43 24-01	Spring	229	415 43 68-01	Panel assembly	-	415 44 19-01	Machine cover
194	415 43 25-01	Needle plate	230	415 43 69-01	Thread take-up lever cover	-	415 44 20-01	Machine cover
195	415 43 26-01	Needle plate tongue	231	415 43 70-01	Needle thread tension cover	-	415 44 21-01	Machine cover
196	415 43 27-01	Set screw	232	415 43 71-01	Needle thread tension cover	-	415 44 22-01	Machine cover
197	415 43 28-01	Set screw	233	415 43 72-01	Thread tension cover	-	415 44 23-01	Machine cover
198	415 43 29-01	Control cover plate	234	415 43 73-01	UL thread tension cover	-	415 44 24-01	Machine cover
199	415 43 30-01	Control cover	235	415 43 74-01	Thread guide panel	-	415 44 25-01	Machine cover
200	415 43 31-01	Material plate R cover	236	415 43 75-01	Cap	-	415 44 26-01	Machine cover
201	415 43 32-01	Spacer collar	237	415 43 76-01	Set screw	-	415 44 27-01	Machine cover
202	415 43 33-01	Set screw	238	415 43 77-01	Belt cover asse.	-	415 44 28-01	Machine cover

**OPTIONAL PARTS**

- 415 44 29-01 Colled hammer
- 415 44 30-01 prasser foot
- 415 44 31-01 Blind hem foot
- 415 44 32-01 Elastic taping foot
- 415 44 33-01 Gauge set
- 415 44 34-01 Stitch tong needle plate
- 415 44 35-01 Foot control 560 D

*anded*