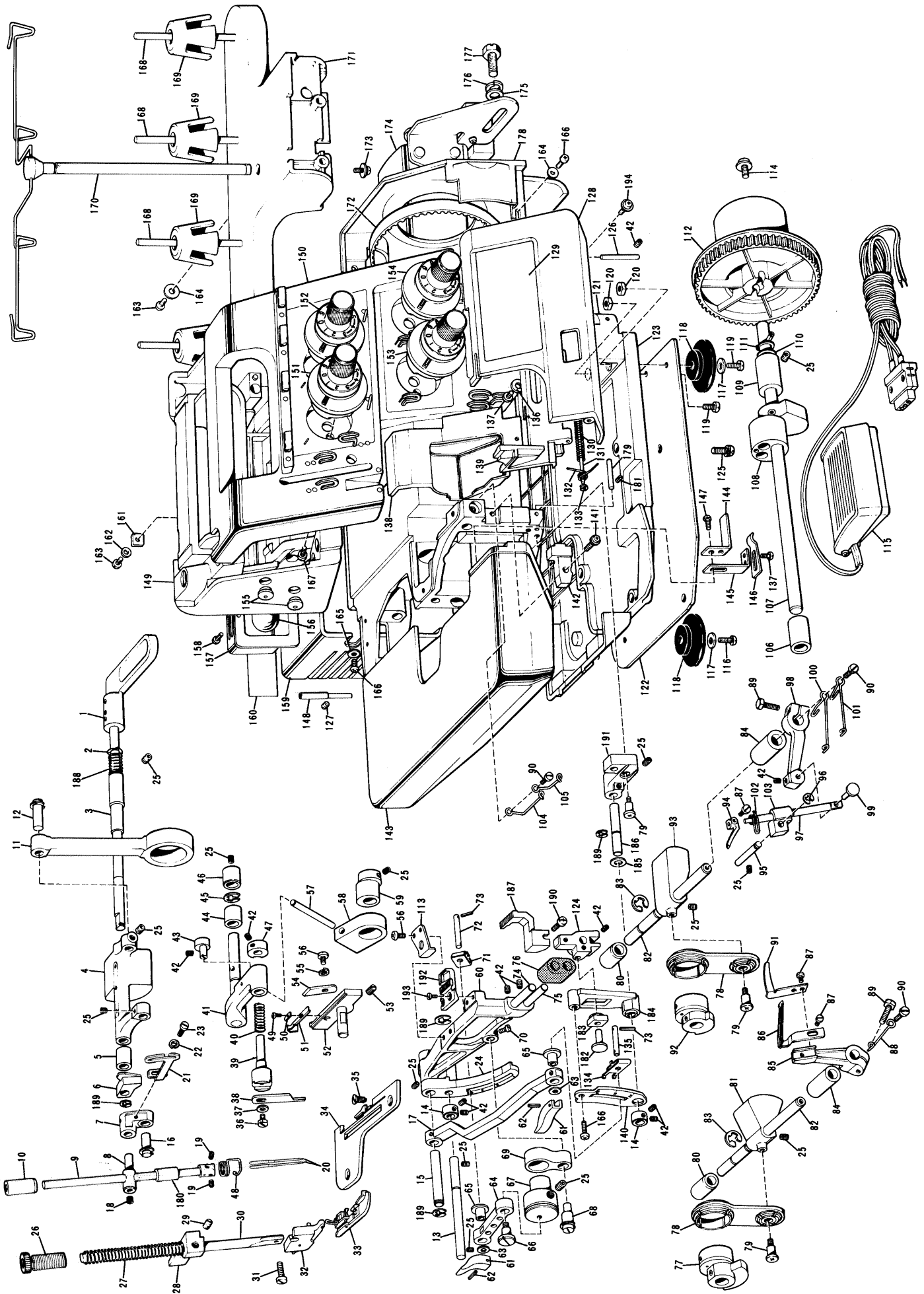




Husqvarna
Sewing machines
Huskylock M535D

HUSQVARNA AB · HUSKVARNA · SWEDEN

535 D



Ref. No.	Parts No.	Parts Name	Ref. No.	Parts No.	Parts Name	Ref. No.	Parts No.	Parts Name	Ref. No.	Parts No.	Parts Name	Ref. No.	Parts No.	Parts Name
1	138877002	Presser bar lifter	61	127559000	Feed adjusting cam	121	127477005	Front cover hinge body	181	151602001	Set screw			
2	120265001	Spring washer	62	047200842	Spring pin	122	127390001	Base plate	182	138867001	Guide shaft			
3	147085000	Driving shaft bushing, right	63	025040232	Washer	123	127334002	Oil pan	183	100066001	Slide block			
4	126566000	Needle bar driving lever	64	127776000	Feed link	124	138873001	Differential feed bar	184	X05009001	Differential feed lever			
5	142822000	Driving shaft bushing, left	65	X05008001	Feed link bushing	125	138850001	Set screw	185	127125001	Washer			
6	138879000	Presser lifter cam	66	126582001	Stud screw	126	126524001	Front cover pin	186	138872001	Differential feed lever shaft			
7	126782001	Needle bar connecting link	67	X05002001	Feed eccentric wheel	127	013679312	Set screw	187	138895001	Differential feed dog			
8	126656001	Needle bar connecting stud	68	127859001	Vertical adjusting shaft	128	127613002	Front cover	188	138880001	Presser lifter cam spring			
9	127866001	Needle bar	69	126872000	Vertical feed lever	129	X05088001	Name plate	189	048050346	Stop ring			
10	126702000	Needle bar bushing, upper	70	104908002	Set screw	130	126519000	Spring	190	06040812	Set screw			
11	126564000	Needle bar rod	71	127558001	Spring	131	126518001	Front cover guide shaft	191	138896000	Differential feed lever base			
12	127186001	Feed shaft	72	X05001001	Feed adjusting shaft	132	126520001	Front cover stopper spring	192	138897001	Main feed dog			
13	138870001	Feed shaft	73	047201442	Spring pin	133	048020346	Stop ring	193	100080004	Set screw			
14	138888001	Set collar	74	138889001	Main feed bar shaft	134	138899001	Spring plate	194	138853001	Set screw			
15	138874001	Feed bar shaft	75	138889001	Differential feed guide shaft	135	138871001	Differential feed link shaft	122991002	Vinyl bag for accessories				
16	127189001	Needle bar link shaft	76	X05041000	Sponge	136	025350332	Washer	122739001	Screw driver				
17	138898000	Differential feed link	77	127839001	Double chain looper eccentric wheel	137	062670402	Set screw	117466000	Pincette				
18	014060622	Set screw	78	127821001	Double chain looper rod	138	127790006	Cloth guide plate	127679003	Needle set				
19	014300322	Set screw	79	127965001	Stud screw	139	127677002	Front cover guide	523603001	Machine brush				
20	142935014	Thread TEx1	80	126611000	Looper shaft bushing, rear	140	X05010001	Differential feed adjusting lever	142603001	Spool cap				
21	028040242	Spring washer	81	127802000	Under looper joint	141	126855001	Front cover block	503161001	Wrench 1.5				
22	009670512	Set screw	82	127820000	Double chain looper shaft	142	127004008	Front cover cover assembly	127610000	Thread net				
23	X05003000	Feed bar lever	83	048060342	Stop ring	143	127863008	Cloth plate cover assembly	193566011	Instruction book (English)				
24	012500632	Set screw	84	126610000	Looper shaft bushing, front	144	126839001	Spring fixing plate, B	126736001	Machine cover				
25	142860001	Presser adjusting screw	85	X0507001	Under looper lever	145	126837001	Spring fixing plate, A	X05072001	Curling stitch attachment				
26	126662001	Presser bar spring	86	127840001	Double chain looper assembly	146	126530001	Cloth plate cover spring plate						
27	127198000	Presser bar bracket	87	009670512	Set screw	147	009670712	Set screw						
28	100058003	Presser bar	88	127685001	Looper thread take-up	148	126791001	Hinge pin						
29	126660001	Presser bar	89	017501415	Set screw	149		Machine body						
30	126851001	Set screw	90	105123003	Set screw	150	X05065001	Panel assembly						
31	138881001	Presser holder assembly	91	127813001	Needle guard plate	151	X05066001	Needle tension dial assembly, L						
32	127887001	Presser foot assembly	92	127144001	Looper rod eccentric wheel	152	X05067001	Needle tension dial assembly, R						
33	X05060001	Needle plate	93	127822000	Looper joint	153	X05088001	Over looper thread tension dial assembly						
34	100032001	Set screw	94	127814001	Over looper	154	X05089001	Under looper thread tension dial assembly						
35	125176001	Washer	95	127784001	Guide shaft	155	114255001	Cap						
36	105161003	Upper knife	96	048040342	Stop ring	156		Sew-light assembly						
37	127734001	Upper knife holder	97	127786001	Over looper shaft	157	127264004	Rear cover						
38	126772001	Upper knife presser spring	98	X05076001	Over looper shaft lever	158	002300603	Set screw						
39	127792001	Upper knife driving arm	99	127856001	Over looper stud shaft	159	126536003	Motor cover						
40	127792001	Upper knife driving arm	100	127856001	Looper thread take-up, B	160		Model mark						
41	014400422	Set screw	101	127855001	Looper thread take-up, A	161	127254001	Nut						
42	127656001	Driving arm bushing, left	102	127817001	Over looper thread guide	162	126850000	Washer						
43	126595000	Stop ring	103	127828000	Over looper thread guide	163	062401206	Set screw						
44	048070342	Driving arm bushing, right	104	127818001	Looper thread guide, A	164	025040332	Washer						
45	126594000	Upper knife holder guide	105	127854001	Looper thread guide, B	165	127753001	Washer						
46	127669001	Upper knife holder guide	106	142818000	Driving shaft bushing, left	166	062400804	Set screw						
47	127869001	Needle bar thread guide	107	127788001	Driving shaft	167	037401014	Set screw						
48	112397001	Set screw	108	127833001	Needle bar eccentric wheel assembly	168	142914001	Spool pin						
49	138860001	Washer	109	126558000	Driving shaft bushing, right	169	126863001	Spool cushion						
50	138810001	Needle guard	110	127797000	Washer	170	127108903	Spool stand assembly						
51	X05019001	Lower knife holder	111	048100142	Stop ring	171	127056001	Spool stand base						
52	151605002	Set screw	112	127830004	Timing pulley	172	126533000	Timing belt						
53	X05007001	Lower knife	113	138900001	Feed guide plate	173	138851001	Set screw						
54	028040242	Spring washer	114	138849001	Set screw	174		Motor complete						
55	060400612	Set screw	115	142957001	Controller complete	175	100197004	Set screw						
56	1278905001	Upper knife driving lever	116	025710232	Washer	176	129107001	Spring washer						
57	127795000	Upper knife driving lever guide	117	126540000	Cushion	177	103741001	Set screw						
58	127783000	Upper knife eccentric wheel	118	107423001	Set screw	178	12678002	Belt cover						
59	138832001	Main feed bar	119	105367002	Nut	179	126526001	Front cover stopper shaft						
60			120			180	126703000	Needle bar bushing, lower						