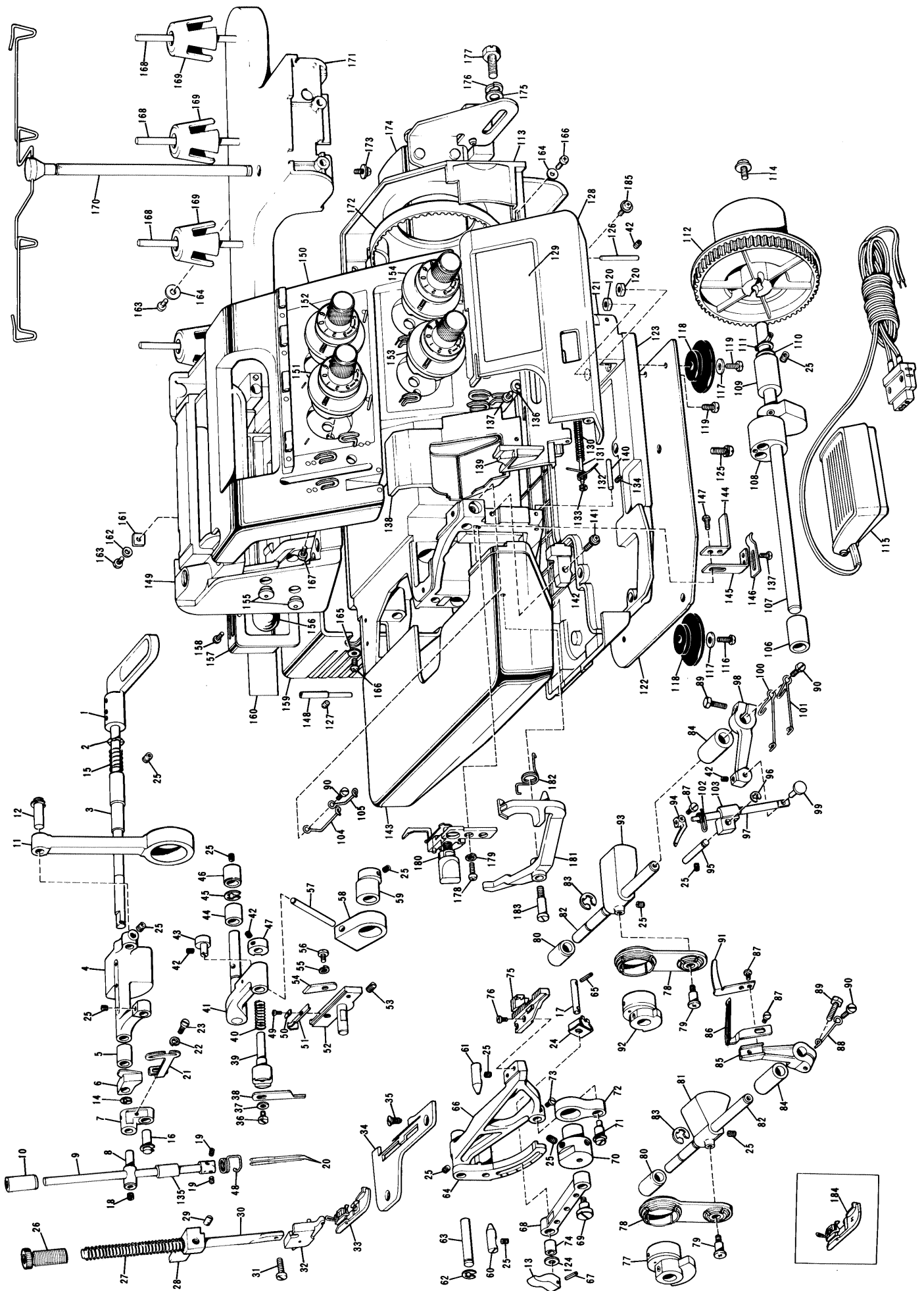


Husqvarna
Sewing machines
Huskylock M535C

535 C



Ref. No.	Parts No.	Parts Name	Ref. No.	Parts No.	Parts Name	Ref. No.	Parts No.	Parts Name	Ref. No.	Parts No.	Parts Name	Ref. No.	Parts No.	Parts Name	Ref. No.	Parts No.	Parts Name
1	138877002	Presser bar lifter	61	116605001	Center pin	121	127477005	Front cover hinge body	181	X05004001	Stitch change lever						
2	120265001	Spring washer	62	048050346	Stop ring	122	127390001	Base plate	182	127567001	Spring						
3	147085000	Driving shaft bushing, right	63	126584000	Feed bar shaft	123	127334002	Oil pan	183	128897001	Stud plate						
4	126566000	Needle bar driving lever	64	127348000	Feed bar lever	124	025040232	Washer	184	127917001	Presser foot assembly M						
5	142822000	Driving shaft bushing, left	65	047201442	Spring pin	125	138850001	Set screw	185	138853001	Set screw						
6	138879000	Presser lifter cam	66	127609000	Feed Bar	126	126524001	Front cover pin	122991002	122739001	Vinyl bag for accessories						
7	126782001	Needle bar connecting link	67	047200842	Spring pin	127	013679312	Set screw	122739001	122739001	Screw driver						
8	126656001	Needle bar connecting stud	68	127776000	Feen link	128	127613002	Front cover	117466000	117466000	Pincette						
9	127866001	Needle bar	69	126582001	Feed link stud screw	129	X05191001	Name plate	127679003	127679003	Needle set						
10	126702000	Needle bar bushing, upper	70	127485001	Feed eccentric wheel	130	126519000	Spring	523603001	523603001	Machine brush						
11	126564000	Needle bar rod	71	127859001	Vertical adjusting shaft	131	126518001	Front cover guide shaft	142603001	142603001	Spool cap						
12	127186001	Rod shaft	72	126872000	Vertical feed lever	132	126520001	Front cover stopper spring	S03161001	S03161001	Wrench 1.5						
13	127559001	Feed adjusting cam	73	104908002	Set screw	133	048020346	Stop ring	127610000	127610000	Thread net						
14	048050346	Stop ring	74	127561000	Feed link bush	134	151602001	Set screw	193566011	193566011	Instruction book (English)						
15	138880001	Presser lifter cam spring	75	127812001	Feed dog	135	126703000	Needle bar bushing, lower	126736001	126736001	Machine cover						
16	127189001	Needle bar link shaft	76	100080004	Set screw	136	025350332	Washer									
17	127560001	Feed adjusting shaft	77	127839001	Double chain looper eccentric wheel	137	062670402	Set screw									
18	014060622	Set screw	78	127821001	Double chain looper rod	138	127790103	Cloth guide plate									
19	014300322	Set screw	79	127965001	Stud screw	139	127677002	Front cover guide									
20	142935014	Needle TEX1	80	126611000	Looper shaft bushing, rear	140	126526001	Front cover stopper shaft									
21	127800001	Thread take-up	81	127824000	Under looper joint	141	126855001	Set screw									
22	028040242	Spring washer	82	127782000	Double chain looper shaft	142	127004008	Front cover block									
23	009670512	Set screw	83	048060342	Stop ring	143	127863008	Cloth plate cover assembly									
24	127558001	Spring plate	84	126610000	Looper shaft bushing, front	144	126839001	Spring fixing plate, B									
25	012500632	Set screw	85	X05077001	Under looper lever	145	126837001	Spring fixing plate, A									
26	142860001	Presser adjusting screw	86	127840001	Double chain looper assembly	146	126530001	Cloth plate cover spring plate									
27	126662001	Presser bar spring	87	009670512	Set screw	147	009670712	Set screw									
28	127198000	Presser bar bracket	88	127685001	Looper thread take-up	148	126791001	Hinge pin									
29	100058003	Set screw	89	017501415	Set screw	149		Machine body									
30	126660001	Presser bar	90	105123003	Set screw	150	X05065001	Panel assembly									
31	126851001	Set screw	91	127813001	Needle guard plate	151	X05066001	Needle tension dial assembly, L									
32	138881001	Presser holder assembly	92	127144001	Looper rod eccentric wheel	152	X05067001	Needle tension dial assembly, R									
33	127887001	Presser foot assembly	93	127822000	Looper joint	153	X05068001	Over looper thread tension dial assembly									
34	138756001	Needle plate	94	127814001	Over looper	154	X05069001	Under looper thread tension dial assembly									
35	100032001	Set screw	95	127784001	Guide shaft	155	114255001	Cap									
36	125176001	Set screw	96	048040342	Stop ring	156		Sew-light assembly									
37	105161003	Washer	97	127786001	Over looper shaft	157	127264004	Rear cover									
38	127734001	Upper knife	98	X05076001	Over looper shaft lever	158	002300603	Set screw									
39	126769001	Upper knife holder	99	127785001	Over looper stud shaft	159	126536003	Motor cover									
40	126772001	Upper knife presser spring	100	127856001	Looper thread take-up, B	160		Model mark									
41	127792001	Upper knife driving arm	101	127855001	Looper thread take-up, A	161	127254001	Nut									
42	014400422	Set screw	102	127817001	Over looper thread guide	162	126850000	Washer									
43	127656001	Upper knife holder guide shaft	103	127828000	Over looper shaft guide	163	062401206	Set screw									
44	126595000	Driving arm bushing, left	104	127818001	Looper thread guide, A	164	025040332	Washer									
45	048070342	Stop ring	105	127854001	Looper thread guide, B	165	127753001	Washer									
46	126594000	Driving arm bushing, right	106	142818000	Driving shaft bushing, left	166	062400804	Set screw									
47	127669001	Upper knife holder guide	107	127788001	Driving shaft	167	037401014	Set screw									
48	127869001	Needle bar thread guide	108	127833001	Needle bar eccentric wheel assembly	168	142914001	Spool pin									
49	112397001	Set screw	109	126558000	Driving shaft bushing, right	169	126863001	Spool cushion									
50	138860001	Washer	110	127797000	Washer	170	127108003	Spool stand assembly									
51	127603001	Needle guard	111	048100142	Stop ring	171	127056001	Spool stand base									
52	X05019001	Lower knife holder	112	127830004	Timing pulley	172	126533000	Timing belt									
53	151605002	Set screw	113	127678002	Belt cover	173	138851001	Set screw									
54	X05007001	Lower knife	114	138849001	Set screw	174		Motor complete									
55	028040242	Spring washer	115		Controller complete	175	100197004	Set screw									
56	060400612	Set screw	116	142957001	Set screw	176	129107001	Spring washer									
57	127805001	Upper knife driving lever	117	025710232	Washer	177	103741001	Set screw									
58	127795000	Upper knife driving lever guide	118	126540000	Cushion	178	062400804	Set screw									
59	127783000	Upper knife eccentric wheel	119	107423001	Set screw	179	028040242	Spring Washer									
60	127346001	Center pin	120	105367002	Nut	180	X05099001	Stitch change knob assembly									