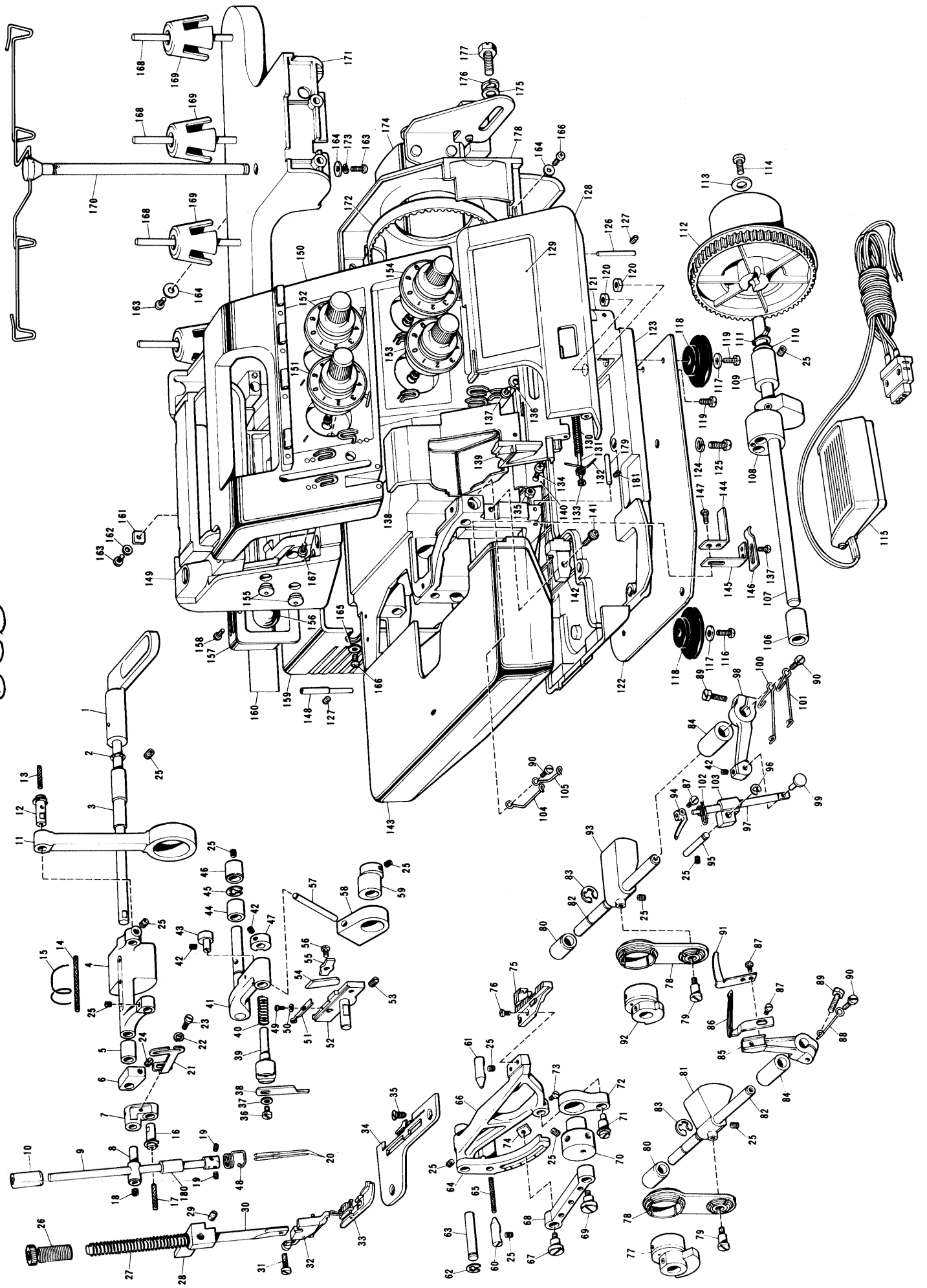


Husqvarna
Sewing machines
Huskylock M530

530



| Ref. No. | Parts No. | Parts Name | Ref. No. | Parts No. | Parts Name | Ref. No. | Parts No. | Parts Name | Ref. No. | Parts No. | Parts Name | Ref. No. | Parts No. | Parts Name |
|----------|-----------|---------------------------------|----------|-----------|-------------------------------------|----------|-----------|---|----------|-----------|----------------------------|----------|-----------|------------|
| 1 | 126794002 | Presser bar lifter | 61 | 116605001 | Center pin | 121 | 127477002 | Front cover hinge body | 181 | 013660612 | Set screw | | | |
| 2 | 120265001 | Spring washer | 62 | 048050346 | Stop ring | 122 | 127390001 | Base plate | | 122991002 | Vinyl bag for accessories | | | |
| 3 | 147085000 | Driving shaft bushing, right | 63 | 126584000 | Feed bar shaft | 123 | 127394000 | Oil pan | | 122739001 | Screw driver | | | |
| 4 | 126566000 | Needle bar driving lever | 64 | 127348000 | Feed bar lever | 124 | 028770242 | Spring washer | | 117466000 | Pincette | | | |
| 5 | 142822000 | Driving shaft bushing, left | 65 | 142869000 | Feed lever wick | 125 | 009781812 | Set screw | | 127679003 | Needle set | | | |
| 6 | 126661001 | Presser lifter cam | 66 | 127609000 | Feed bar | 126 | 126524001 | Front cover pin | | 523603001 | Machine brush | | | |
| 7 | 126782001 | Needle bar connecting link | 67 | 127787001 | Feed adjusting screw | 127 | 013679312 | Set screw | | 142603001 | Spool cap | | | |
| 8 | 126656001 | Needle bar connecting stud | 68 | 127776000 | Feed link | 128 | 127613001 | Front cover | | S03161001 | Wrench 1.5 | | | |
| 9 | 127866001 | Needle bar | 69 | 126582001 | Feed link stud screw | 129 | 127985001 | Name plate | | 127610000 | Thread net | | | |
| 10 | 126702000 | Needle bar bushing, upper | 70 | 127485001 | Feed eccentric wheel | 130 | 126519000 | Spring | | 193541025 | Instruction book (English) | | | |
| 11 | 126564000 | Needle bar rod | 71 | 127859001 | Vertical adjusting shaft | 131 | 126518001 | Front cover guide shaft | | 126736001 | Machine cover | | | |
| 12 | 127186001 | Rod shaft | 72 | 126872000 | Vertical feed lever | 132 | 126520001 | Front cover stopper spring | | 127898001 | Curling stitch attachment | | | |
| 13 | 126592000 | Wick | 73 | 104908002 | Set screw | 133 | 048020346 | Stop ring | | | | | | |
| 14 | 126796000 | Wick | 74 | 127799001 | Nut | 134 | 002309402 | Set screw | | | | | | |
| 15 | 126795001 | Wick spring | 75 | 127812001 | Feed dog | 135 | 021300302 | Nut | | | | | | |
| 16 | 127189001 | Needle bar link shaft | 76 | 100800004 | Set screw | 136 | 025350332 | Washer | | | | | | |
| 17 | 117429001 | Wick | 77 | 127839001 | Double chain looper eccentric wheel | 137 | 007679302 | Set screw | | | | | | |
| 18 | 100289002 | Set screw | 78 | 127821001 | Double chain looper rod | 138 | 127790004 | Cloth guide plate | | | | | | |
| 19 | 014300322 | Set screw | 79 | 127965001 | Stud screw | 139 | 127677001 | Front cover guide | | | | | | |
| 20 | 142935014 | Needle TEX1 | 80 | 126611000 | Looper shaft bushing, rear | 140 | 126521001 | Front cover spring plate | | | | | | |
| 21 | 127800001 | Thread take-up | 81 | 127824000 | Upper looper joint | 141 | 126855001 | Set screw | | | | | | |
| 22 | 028040242 | Spring washer | 82 | 127782000 | Double chain looper shaft | 142 | 127004004 | Front cover block | | | | | | |
| 23 | 009670512 | Set screw | 83 | 048060342 | Stop ring | 143 | 127863002 | Cloth plate cover assembly | | | | | | |
| 24 | 151603001 | Set screw | 84 | 126610000 | Looper shaft bushing, front | 144 | 126839001 | Spring fixing plate, B | | | | | | |
| 25 | 012500632 | Set screw | 85 | 127777001 | Under looper lever | 145 | 126837001 | Spring fixing plate, A | | | | | | |
| 26 | 142860001 | Presser adjusting screw | 86 | 127840001 | Double chain looper assembly | 146 | 126530001 | Cloth plate cover spring plate | | | | | | |
| 27 | 126662001 | Presser bar spring | 87 | 009670512 | Set screw | 147 | 009670712 | Set screw | | | | | | |
| 28 | 127773001 | Presser bar bracket | 88 | 127685001 | Looper thread take-up | 148 | 126791001 | Hinge pin | | | | | | |
| 29 | 100058003 | Set screw | 89 | 142936001 | Set screw | 149 | | Machine body | | | | | | |
| 30 | 126660001 | Presser bar | 90 | 105123003 | Set screw | 150 | 138707001 | Panel assembly | | | | | | |
| 31 | 126851001 | Set screw | 91 | 127813001 | Needle guard plate | 151 | 138710001 | Needle tension dial assembly, L | | | | | | |
| 32 | 127535001 | Presser holder assembly | 92 | 127144001 | Looper rod eccentric wheel | 152 | 138709001 | Needle tension dial assembly, R | | | | | | |
| 33 | 127887001 | Presser foot assembly | 93 | 127822000 | Looper joint | 153 | 138711001 | Double chain thread tension dial assembly | | | | | | |
| 34 | 127889001 | Needle plate | 94 | 127814001 | Over looper | 154 | 138712001 | Looper thread tension dial assembly | | | | | | |
| 35 | 100032001 | Set screw | 95 | 12784001 | Guide shaft | 155 | 114255001 | Cap | | | | | | |
| 36 | 125176001 | Set screw | 96 | 048040342 | Stop ring | 156 | | Sew-light assembly | | | | | | |
| 37 | 105161003 | Washer | 97 | 127786001 | Over looper shaft | 157 | 127264001 | Rear cover | | | | | | |
| 38 | 127734001 | Upper knife | 98 | 127791001 | Over looper shaft lever | 158 | 002300603 | Set screw | | | | | | |
| 39 | 126769001 | Upper knife holder | 99 | 127785001 | Over looper stud shaft | 159 | 126536000 | Motor cover | | | | | | |
| 40 | 126772001 | Upper knife presser spring | 100 | 127866001 | Looper thread take-up, B | 160 | | Model mark | | | | | | |
| 41 | 127792001 | Upper knife driving arm | 101 | 127855001 | Looper thread take-up, A | 161 | 127254001 | Nut | | | | | | |
| 42 | 014400522 | Set screw | 102 | 127817001 | Over looper thread guide | 162 | 126850000 | Washer | | | | | | |
| 43 | 127666001 | Upper knife holder guide shaft | 103 | 127828000 | Over looper shaft guide | 163 | 002401204 | Set screw | | | | | | |
| 44 | 126595000 | Driving arm bushing, left | 104 | 127818001 | Looper thread guide, A | 164 | 025040332 | Washer | | | | | | |
| 45 | 048070342 | Stop ring | 105 | 127854001 | Looper thread guide, B | 165 | 127753001 | Washer | | | | | | |
| 46 | 126594000 | Driving arm bushing, right | 106 | 142818000 | Driving shaft bushing, left | 166 | 002400804 | Set screw | | | | | | |
| 47 | 127669001 | Upper knife holder guide | 107 | 127788001 | Driving shaft | 167 | 009681212 | Set screw | | | | | | |
| 48 | 127869001 | Needle bar thread guide | 108 | 127833001 | Needle bar eccentric wheel assembly | 168 | 142914001 | Spool pin | | | | | | |
| 49 | 112397001 | Set screw | 109 | 126558000 | Driving shaft bushing, right | 169 | 126863000 | Spool cushion | | | | | | |
| 50 | 025630132 | Washer | 110 | 127797000 | Washer | 170 | 127108001 | Spool stand assembly | | | | | | |
| 51 | 127603001 | Needle guard | 111 | 048100142 | Stop ring | 171 | 127056000 | Spool stand base | | | | | | |
| 52 | 138701001 | Lower knife holder | 112 | 127830003 | Timing pulley | 172 | 126633000 | Timing belt | | | | | | |
| 53 | 151605002 | Set screw | 113 | 025770232 | Washer | 173 | 028040242 | Spring washer | | | | | | |
| 54 | 127134001 | Lower knife | 114 | 009781412 | Set screw | 174 | | Motor complete | | | | | | |
| 55 | 117515001 | Lower knife presser plate | 115 | | Controller complete | 175 | 100197004 | Set screw | | | | | | |
| 56 | 062680812 | Set screw | 116 | 142957001 | Set screw | 176 | 129107001 | Spring washer | | | | | | |
| 57 | 127805001 | Upper knife driving lever | 117 | 025710232 | Washer | 177 | 103741001 | Set screw | | | | | | |
| 58 | 127795000 | Upper knife driving lever guide | 118 | 126540000 | Cushion | 178 | 127678001 | Belt cover | | | | | | |
| 59 | 127783001 | Upper knife eccentric wheel | 119 | 107423001 | Set screw | 179 | 126526001 | Front cover stopper shaft | | | | | | |
| 60 | 127349001 | Center pin | 120 | 105367002 | Nut | 180 | 126703000 | Needle bar bushing, lower | | | | | | |