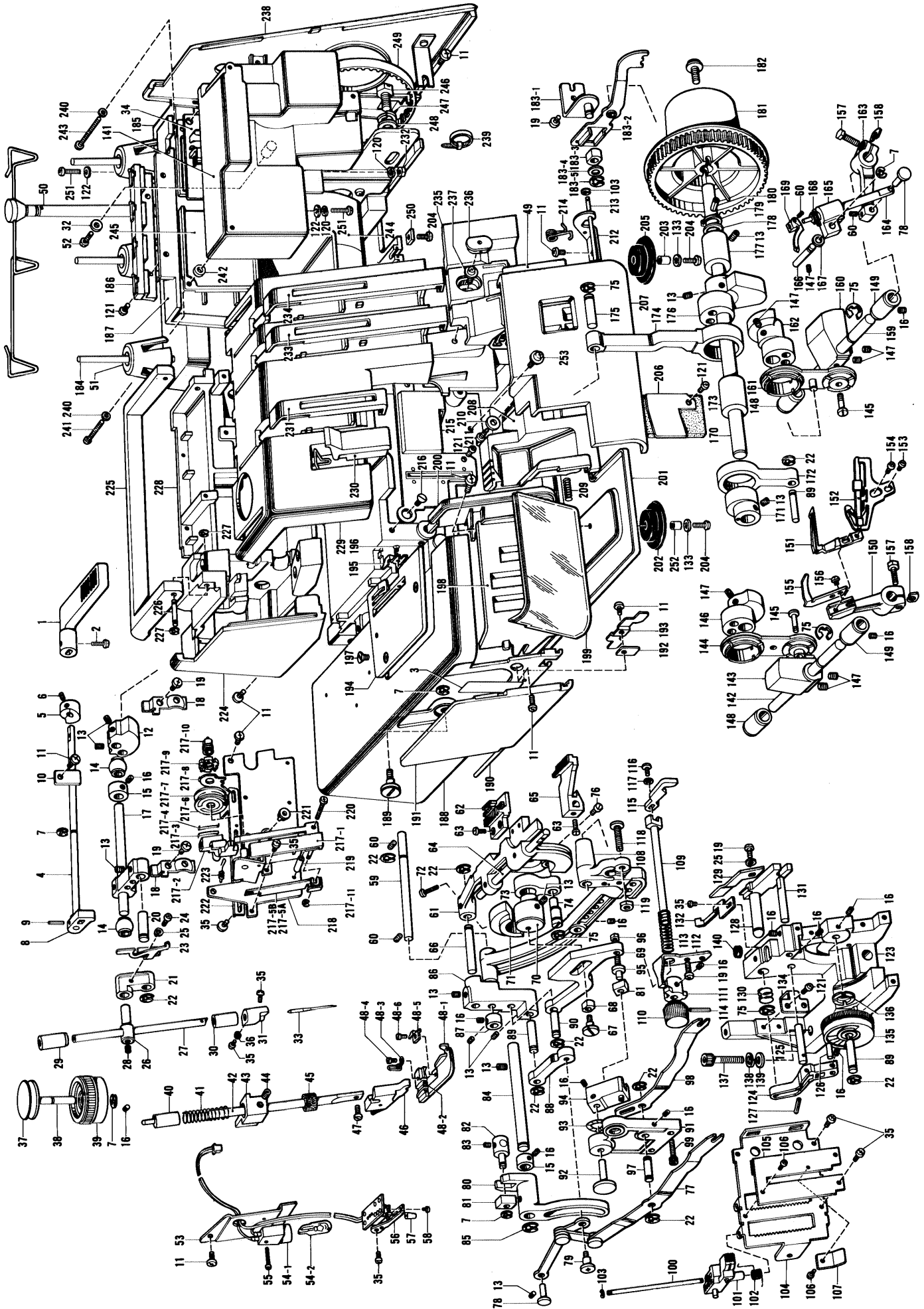


**Husqvarna**  
**Sewing machines**  
**Huskylock M460D**

# M 460 D



Ref. No.	Parts No.	Parts Name	Ref. No.	Parts No.	Parts Name	Ref. No.	Parts No.	Parts Name	Ref. No.	Parts No.	Parts Name
1	X75108001	Presser foot lever	54-1	X53086001	Light holder assembly	113	X75231001	Spring	173	127690000	Driving shaft bushing, left
2	060300806	Set screw	54-2	X50228001	Sew-light bulb	114	047201242	Spring pin	174	138839000	Needle bar rod
3	125876001	Sticker	55	002261605	Set screw	115	X75059001	Upper blade	175	X75065001	Rod shaft
4	X75107000	Presser bar lifter shaft	56	X75152001	Sew-light switch holder	116	060670812	Set screw	176	X75137000	Needle bar connecting wheel assembly
5	X75158000	Tension release cam	57	X75461001	Sew-light switch cap	117	105161003	Washer	177	126558000	Driving shaft bushing, right
6	014300632	Set screw	58	002020416	Set screw	118	X75314001	Set screw	178	127797000	Washer
7	048040342	Stop ring	59	X75079001	Feed shaft	119	021060312	Nut	179	048100142	Stop ring
8	X75118000	Presser lifter cam	60	014400422	Set screw	120	028040245	Spring washer	180	047402542	Spring pin
9	047161042	Spring pin	61	X75237001	Feed bar	121	062400804	Set screw	181	X75202001	Handwheel
10	X75308001	Shaft presser	62	X75226001	Main feed dog	122	026040235	Washer	182	138849001	Set screw
11	060400612	Set screw	63	100080003	Set screw	123	X75192000	Needle plate base	183	X75367001	Looper thread take-up lever assembly
12	X75138000	Needle bar driving lever	64	X75081001	Differential feed lever shaft	124	X75123000	Lower blade movable lever	183-1	X75153001	Thread take-up lever bracket
13	012500632	Set screw	65	X75228001	Differential feed dog	125	X75090001	Lever shaft	183-2	X75132001	Looper thread take-up lever
14	X75071000	Crank shaft bushing	66	X75075001	Feed bar shaft	126	X75091001	Pin	183-3	X75076000	Slide block
15	X75150001	Collar	67	X75076000	Slide block	127	047301442	Spring pin	183-4	025770232	Washer
16	014400532	Set screw	68	X75076000	Horizontal feed lever	128	X75103000	Lower blade holder	183-5	048050346	Stop ring
17	X75557001	Needle bar crank shaft assembly	69	X75127000	Feed eccentric wheel	129	X75233001	Lower blade	184	142914001	Spool pin
18	X75058001	Bushing presser	70	X75167000	Feed eccentric wheel	130	X75234001	Spring	185	X75253001	Spool stand base
19	060400812	Set screw	71	X75536000	Feed eccentric wheel balance	131	X75262001	Lower blade guide shaft	186	X75404002	Thread rectifier body
20	X75217001	Needle bar link shaft	72	062301206	Set screw	132	X75184001	Needle guard	187	X75197001	Rear cover
21	126782001	Needle bar link A	73	126872000	Vertical feed lever	133	026040332	Washer	188	X75193001	Material plate cover
22	048050346	Stop ring	74	127801001	Vertical adjusting shaft	134	X75229001	Feed bar guide	189	X75284001	Material plate cover set screw
23	X75062001	Thread take-up	75	048060342	Stop ring	135	X75507002	Stitch width control dial	190	X75283000	Slide cover shaft
24	062670612	Set screw	76	104908002	Set screw	136	X75224000	Spring	191	X75278001	Slide cover
25	028040242	Washer	77	X75350001	Differential feed change lever asse.	137	018062522	Set screw	192	X75285001	Shaft presser
26	126866001	Needle bar connecting stud	78	127785001	Stud shaft	138	028060242	Spring washer	193	X75279001	Spring
27	X75136001	Needle bar	79	X75222001	Stud screw	139	026060232	Washer	194	X75210001	Needle plate
28	014060622	Set screw	80	X75061000	Differential feed lever	140	127025000	Cap	195	X75216001	Needle plate stitch
29	126702000	Needle bar bushing, upper	81	X75083000	Slide block	141	X52516001	Insulation cover	196	141542001	Set screw
30	126703000	Needle bar bushing, lower	82	X75082001	Slide block stud	142	X75207000	UL lever shaft	197	100032003	Set screw
31	X75471001	Needle clamp	83	524713001	Set screw	143	X75142000	UL balance	198	X75297002	Control cover plate
32	554166000	Insulation washer	84	X75080001	Differential feed lever shaft	144	X75391001	UL rod assembly	199	X75392001	Control cover
33	117914014	Needle #14	85	048070342	Stop ring	145	X75317001	Stud shaft	200	X75187001	Material plate R cover
34	060300616	Power supply unit assembly	86	X75221000	Feed bar lever	146	X75105000	UL rod eccentric wheel	201	X75131001	Oil pan
35	028030246	Spring washer	87	X75100001	Collar	147	014500632	Set screw	202	X75545000	Cushion A
36	X75406001	Pressure adjustment dial plate	88	X75116000	Differential feed link	148	126611000	Looper shaft bushing, rear	203	X75329000	Spacer collar
37	X75535001	Pressure adjustment stud	89	X75130001	Link shaft	149	X75251000	Looper shaft bushing, front	204	060401012	Set screw
38	X75126002	Pressure adjustment dial	90	X75078001	Horizontal feed lever shaft	150	X05077001	Under looper lever	205	X75271000	Cushion
39	X75117000	Pressure adjustment bush	91	X75110000	Feed change lever bracket	151	X75208001	Under looper	206	X75394001	Front cover
40	X75218001	Presser bar spring	92	X75084001	Stud shaft	152	X75414001	Under looper thread guide assembly	207	X75040001	Front cover
41	X75134000	Presser bar	93	X75397001	Washer	153	062670312	Set screw	208	X75195001	Front cover guide
42	X75099000	Presser bar bracket	94	X75101000	Slide block guide	154	062670512	Set screw	209	X75281001	Spring
43	014500622	Set screw	95	X75122001	Slide block stud	155	X75388001	Needle guard plate	210	102707001	Washer
44	X75542000	Felt	96	021400312	Nut	156	062670402	Set screw	211	037401014	Set screw
45	138881001	Presser foot holder assembly	97	X75085001	Feed change lever shaft	157	017501415	Looper lever fixing screw	212	X75161001	Front cover hinge
46	126851001	Set screw	98	018401632	Set screw	158	X05281001	Washer	213	X75066001	Hinge shaft
47	X75505001	Presser foot assembly	99	X75155001	Feed adjusting knob shaft	159	X75256000	OL lever shaft	214	X75282001	Spring
48-1	X75309001	Presser foot	100	X75155001	Control lever	160	X75141000	Looper joint	215	X75368001	Thread take-up lever cover
48-2	127554001	Pin	101	X75074001	Spring	161	X75323001	Over looper rod	216	062400804	Set screw
48-3	138820001	Spring	102	048020346	Stop ring	162	X75104000	Looper rod connecting wheel	217-A	X75549002	UL & needle thread, tension assembly
48-4	127397001	Set screw	103	X75168001	Control panel base plate	163	X05076001	Over looper shaft lever	217-B	X75550002	OL thread tension assembly
48-5	127342001	Sitch tongue	104	X75154002	Control panel base cover	164	127786001	Over looper shaft	217-1	X75143002	Thread tension plate
48-6	126680001	Set screw	105	062300415	Set screw	165	X75093000	Over looper shaft guide	217-2	X75261002	Thread tension lever
49	X75405001	Thread indication sheel	106	X75201001	Spring plate	166	127784001	Guide shaft	217-3	X75252001	Spring
50	X75513001	Spool stand assembly	107	X75147001	Upper blade driving arm	167	025710232	Washer	217-4	X75257001	Lever slide plate
51	126863001	Spool cushion	108	X75139001	Upper blade holder	168	X75070001	Over looper thread guide	217-5-A	X75272001	Tension spring
52	037310612	Set screw	109	X75088001	Upper blade knob	169	X75209001	Over looper	217-5-B	X75393001	Tension spring
53	X75073001	Sew-light plate	110	X75191000	Upper blade holder guide	170	X75156000	Driving shaft	217-6	X75238001	Tension disc, A
54	X52498001	Sew-light assembly	111	X75198001	Guide plate	171	X75169000	Upper blade eccentric wheel	217-7	X75121001	Tension disc
			112	X75198001	Guide plate	172	X75140000	Upper blade link	217-8	X75106001	Tension releaser

