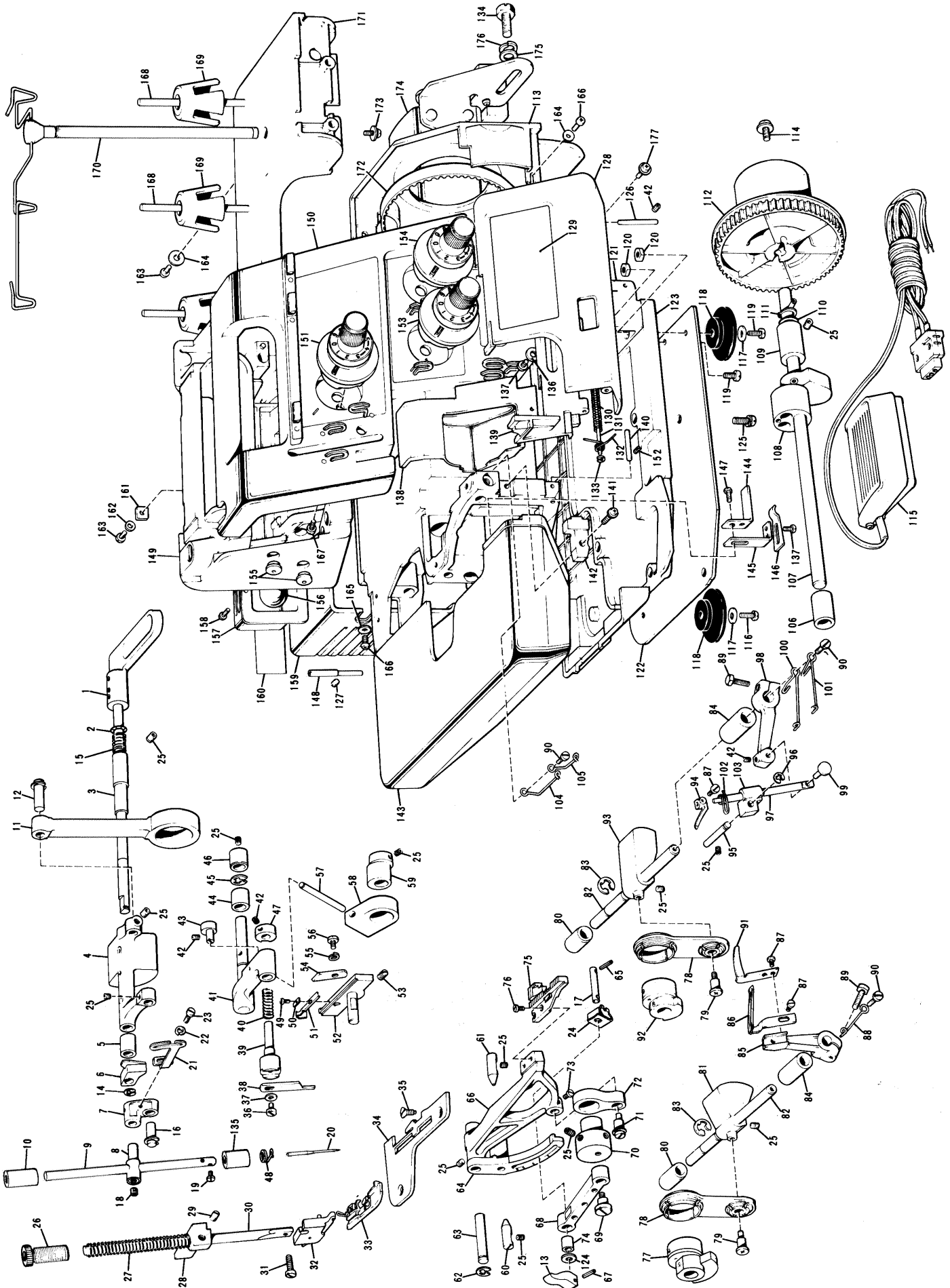


Husqvarna
Sewing machines
Huskylock M435



Ref. No.	Parts No.	Parts Name	Ref. No.	Parts No.	Parts Name	Ref. No.	Parts No.	Parts Name	Ref. No.	Parts No.	Parts Name	Ref. No.	Parts No.	Parts Name
1	138877002	Presser bar lifter	61	116605001	Center pin	121	127477005	Front cover hinge body						
2	120265001	Spring washer	62	048050346	Stop ring	122	127390001	Base plate					523603001	Needle set
3	147085000	Driving shaft bushing, right	63	126584000	Feed bar shaft	123	127334002	Oil pan					142603001	Machine brush
4	126566000	Needle bar driving lever	64	127348000	Feed bar lever	124	025040232	Washer					193566011	Instruction book (English)
5	142822000	Driving shaft bushing, left	65	047201442	Spring pin	125	138850001	Set screw					126736001	Machine cover
6	138879000	Presser lifter cam	66	127609000	Feed bar	126	126524001	Front cover pin					X05092001	Curving stitch attachment
7	126782001	Needle bar connecting link	67	047200842	Spring pin	127	013679312	Set screw						
8	126656001	Needle bar connecting stud	68	127716000	Feen link	128	127613002	Front cover						
9	126568001	Needle bar	69	126582001	Feed link stud screw	129	X05085001	Name plate						
10	126702000	Needle bar bushing, upper	70	127485001	Feed eccentric wheel	130	126519000	Spring						
11	126564000	Needle bar rod	71	127859001	Vertical adjusting shaft	131	126518001	Front cover guide shaft						
12	127186001	Rod shaft	72	126872000	Vertical feed lever	132	126520001	Front cover stopper spring						
13	127559001	Feed adjusting cam	73	104908002	Set screw	133	048020346	Stop ring						
14	048050346	Stop ring	74	127561000	Feed link bush	134	103741001	Set screw						
15	138880001	Presser lifter cam spring	75	127812001	Feed dog	135	126703000	Needle bar bushing, lower						
16	127189001	Needle bar link shaft	76	100080004	Set screw	136	025350332	Washer						
17	127560001	Feed adjusting shaft	77	127839001	Double chain looper eccentric wheel	137	062670402	Set screw						
18	014060622	Set screw	78	127821001	Double chain looper rod	138	127790006	Cloth guide plate						
19	009660414	Set screw	79	127965001	Stud screw	139	127677002	Front cover guide						
20	142935014	Needle TEX1	80	126611000	Looper shaft bushing, rear	140	126526001	Front cover stopper shaft						
21	127800001	Thread take-up	81	127824000	Under looper joint	141	126855001	Set screw						
22	028040242	Spring washer	82	127782000	Double chain looper shaft	142	127004008	Front cover block						
23	009670512	Set screw	83	048060342	Stop ring	143	127863008	Cloth plate cover assembly						
24	127558001	Spring plate	84	126610000	Looper shaft bushing, front	144	126839001	Spring fixing plate, B						
25	012500632	Set screw	85	X05077001	Under looper lever	145	126837001	Spring fixing plate, A						
26	142860001	Presser adjusting screw	86	127840001	Double chain looper assembly	146	126530001	Cloth plate cover spring plate						
27	126662001	Presser bar spring	87	009670512	Set screw	147	009670712	Set screw						
28	127198000	Presser bar bracket	88	127685001	Looper thread take-up	148	126791001	Hinge pin						
29	100058003	Set screw	89	017501415	Set screw	149		Machine body						
30	126660001	Presser bar	90	105123003	Set screw	150	X05090001	Panel assembly						
31	126851001	Set screw	91	127813001	Needle guard plate	151	X05066001	Needle tension dial assembly, L						
32	138881001	Presser holder assembly	92	127144001	Looper rod eccentric wheel	152	151602001	Set screw						
33	127882001	Presser foot assembly	93	127822000	Looper joint	153	X05068001	Over looper thread tesion dial assembly						
34	127802001	Needle plate	94	127814001	Over looper	154	X05069001	Under looper thread tension dial assembly						
35	100032001	Set screw	95	127784001	Guide shaft	155	114255001	Cap						
36	125176001	Set screw	96	048040342	Stop ring	156		Sew-light assembly						
37	105161003	Washer	97	127786001	Over looper shaft	157	127264004	Rear cover						
38	127734001	Upper knife	98	X05076001	Over looper shaft lever	158	002300603	Set screw						
39	126769001	Upper knife holder	99	127785001	Over looper stud shaft	159	126536003	Motor cover						
40	126772001	Upper knife presser spring	100	127856001	Looper thread take-up, B	160		Model mark						
41	127792001	Upper knife driving arm	101	127855001	Looper thread take-up, A	161	127254001	Nut						
42	014400422	Set screw	102	127817001	Over looper thread guide	162	126850000	Washer						
43	127656001	Upper knife holder guide shaft	103	127828000	Over looper shaft guide	163	062401206	Set screw						
44	126595000	Driving arm bushing, left	104	127818001	Looper thread guide, A	164	025040332	Washer						
45	048070342	Stop ring	105	127854001	Looper thread guide, B	165	127753001	Washer						
46	126594000	Driving arm bushing, right	106	142818000	Driving shaft bushing, left	166	062400804	Set screw						
47	127669001	Upper knife holder guide	107	127788001	Driving shaft	167	037401014	Set screw						
48	126704001	Needle bar thread guide	108	127833001	Needle bar eccentric wheel assembly	168	142914001	Spool pin						
49	112397001	Set screw	109	126588000	Driving shaft bushing, right	169	126863001	Spool cushion						
50	138860001	Washer	110	127797000	Washer	170	127103003	Spool stand assembly						
51	138810001	Needle guard	111	048100142	Stop ring	171	127079003	Spool stand base						
52	X05019001	Lower knife holder	112	127830004	Timing pulley	172	126533000	Timing belt						
53	151605002	Set screw	113	127678002	Belt cover	173	138851001	Set screw						
54	X05007001	Lower knife	114	138849001	Set screw	174		Motor complete						
55	028040242	Spring washer	115		Controller complete	175	100197004	Set screw						
56	060400612	Set screw	116	142957001	Set screw	176	129107001	Spring washer						
57	127805001	Upper knife driving lever	117	025710232	Washer	177	138853001	Set screw						
58	127795000	Upper knife driving lever guide	118	126540000	Cushion		122991002	Vinyl bag for accessories						
59	127783000	Upper knife eccentric wheel	119	107423001	Set screw		122739001	Screw driver						
60	127349001	Center pin	120	105367002	Nut		117466000	Pincette						