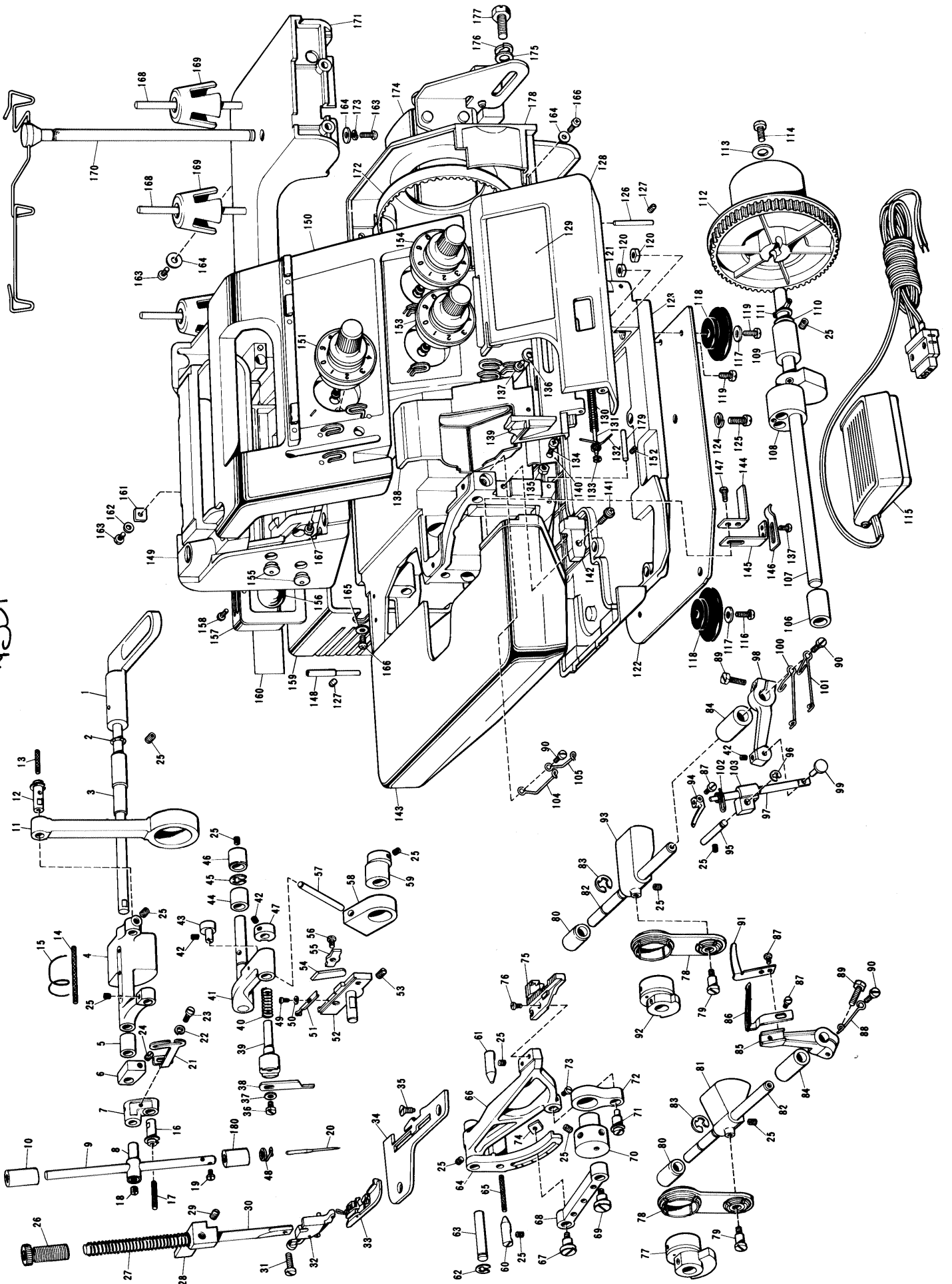


**Husqvarna**  
**Sewing machines**  
**Huskylock M431**

431



Ref. No.	Parts No.	Parts Name	Ref. No.	Parts No.	Parts Name	Ref. No.	Parts No.	Parts Name	Ref. No.	Parts No.	Parts Name	Ref. No.	Parts No.	Parts Name	Ref. No.	Parts No.	Parts Name	
1	126794002	Presser bar lifter	61	116605001	Center pin	121	127477002	Front cover hinge body										
2	120265001	Spring washer	62	048050346	Stop ring	122	127390001	Base plate									122891002	Vinyl bag for accessories
3	147085000	Driving shaft bushing, right	63	126584000	Feed bar shaft	123	127334000	Oil pan									127390001	Screw driver
4	126566000	Needle bar driving lever	64	127348000	Feed bar lever	124	028770242	Spring washer									117466000	Pincette
5	142822000	Driving shaft bushing, left	65	142869000	Feed lever wick	125	009781812	Set screw									127679003	Needle set
6	126661001	Presser lifter cam	66	127609000	Feed bar	126	126524001	Front cover pin									523603001	Machine brush
7	126782001	Needle bar connecting link	67	127787001	Feed adjusting screw	127	013679312	Front cover									142603001	Spool cap
8	126656001	Needle bar connecting stud	68	127776000	Feed link	128	127613001	Front cover									193541025	Instruction book (English)
9	126568001	Needle bar	69	126582001	Feed link stud screw	129	127954001	Name plate									126736001	Machine cover
10	126702000	Needle bar bushing, upper	70	127485001	Feed eccentric wheel	130	126519000	Spring									127898001	Curving stitch attachment
11	126564000	Needle bar rod	71	127859001	Vertical adjusting shaft	131	126518001	Front cover guide shaft										
12	127186001	Rod shaft	72	126872000	Vertical feed lever	132	126520001	Front cover stopper spring										
13	126592000	Wick	73	104908000	Set screw	133	048020346	Stop ring										
14	126796000	Wick	74	127799001	Nut	134	002309402	Set screw										
15	126795001	Wick spring	75	127812001	Feed dog	135	021300302	Nut										
16	127189001	Needle bar link shaft	76	100080004	Set screw	136	025350332	Washer										
17	117429001	Wick	77	127839001	Double chain looper eccentric wheel	137	007679302	Set screw										
18	100289002	Set screw	78	127821001	Double chain looper rod	138	127790004	Cloth guide plate										
19	009660414	Set screw	79	127965001	Stud screw	139	127677001	Front cover guide										
20	142935014	Needle Tex1	80	126611000	Looper shaft bushing, rear	140	126521001	Front cover spring plate										
21	127800001	Thread take-up	81	127824000	Under looper joint	141	126855001	Set screw										
22	028040242	Spring washer	82	127782000	Double chain looper shaft	142	127004004	Front cover block										
23	009670512	Set screw	83	048060342	Stop ring	143	127863002	Cloth plate cover assembly										
24	151603001	Set screw	84	126610000	Looper shaft bushing, front	144	126839001	Spring fixing plate, B										
25	012500632	Set screw	85	127777001	Under looper lever	145	126837001	Spring fixing plate, A										
26	142860001	Presser adjusting screw	86	127840001	Double chain looper assembly	146	126530001	Cloth plate cover spring plate										
27	126662001	Presser bar spring	87	009670512	Set screw	147	009670712	Set screw										
28	127773001	Presser bar bracket	88	127885001	Looper thread take-up	148	126791001	Hinge pin										
29	100058003	Set screw	89	142936001	Set screw	149		Machine body										
30	126660001	Presser bar	90	105123003	Set screw	150	127957001	Panel assembly										
31	126851001	Set screw	91	127813001	Needle guard plate	151	138710001	Needle tension dial assembly										
32	127535001	Presser holder assembly	92	127144001	Looper rod eccentric wheel	152	013660612	Set screw										
33	127882001	Presser foot assembly	93	127822000	Looper joint	153	138711001	Double chain thread tension dial assembly										
34	127802001	Needle plate	94	127814001	Over looper	154	138712001	Looper thread tension dial assembly										
35	100032001	Set screw	95	127784001	Guide shaft	155	114255001	Cap										
36	125176001	Set screw	96	048040342	Stop ring	156		Sew-light assembly										
37	105161003	Washer	97	127786001	Over looper shaft	157	127264001	Rear cover										
38	127734001	Upper knife	98	127791001	Over looper shaft lever	158	002300603	Set screw										
39	126769001	Upper knife holder	99	127785001	Over looper stud shaft	159	126536000	Motor cover										
40	126772001	Upper knife presser spring	100	127856001	Looper thread take-up, B	160		Model mark										
41	127792001	Upper knife driving arm	101	127855001	Looper thread take-up, A	161	127254001	Nut										
42	014400522	Set screw	102	127817001	Over looper thread guide	162	126850000	Washer										
43	127656001	Upper knife holder guide shaft	103	127828000	Over looper shaft guide	163	002401204	Set screw										
44	126595000	Driving arm bushing, left	104	127818001	Looper thread guide, A	164	025040332	Washer										
45	048070342	Stop ring	105	127854001	Looper thread guide, B	165	127753001	Washer										
46	126594000	Driving arm bushing, right	106	142818000	Driving shaft bushing, left	166	002400804	Set screw										
47	127669001	Upper knife holder guide	107	127788001	Driving shaft	167	009681212	Set screw										
48	126704001	Needle bar thread guide	108	127833001	Needle bar eccentric wheel assembly	168	142914001	Spool pin										
49	112397001	Set screw	109	126580000	Driving shaft bushing, right	169	126863000	Spool cushion										
50	026630132	Washer	110	127797000	Washer	170	127103001	Spool stand assembly										
51	127603001	Needle guard	111	048100142	Stop ring	171	127079000	Spool stand base										
52	138701001	Lower knife holder	112	127830003	Timing pulley	172	126533000	Timing belt										
53	151605002	Set screw	113	025770232	Washer	173	028040242	Spring washer										
54	127134001	Lower knife	114	009781412	Set screw	174		Motor complete										
55	117515001	Lower knife presser plate	115		Set screw	175	100197004	Washer										
56	062680812	Set screw	116	142957001	Controller complete	176	129107001	Spring washer										
57	127805001	Upper knife driving lever	117	025710232	Washer	177	103741001	Set screw										
58	127795000	Upper knife driving lever guide	118	126540000	Cushion	178	126780001	Belt cover										
59	127783000	Upper knife eccentric wheel	119	107423001	Set screw	179	126526001	Front cover stopper shaft										
60	127349001	Center pin	120	105367002	Nut	180	126703000	Needle bar bushing, lower										

187