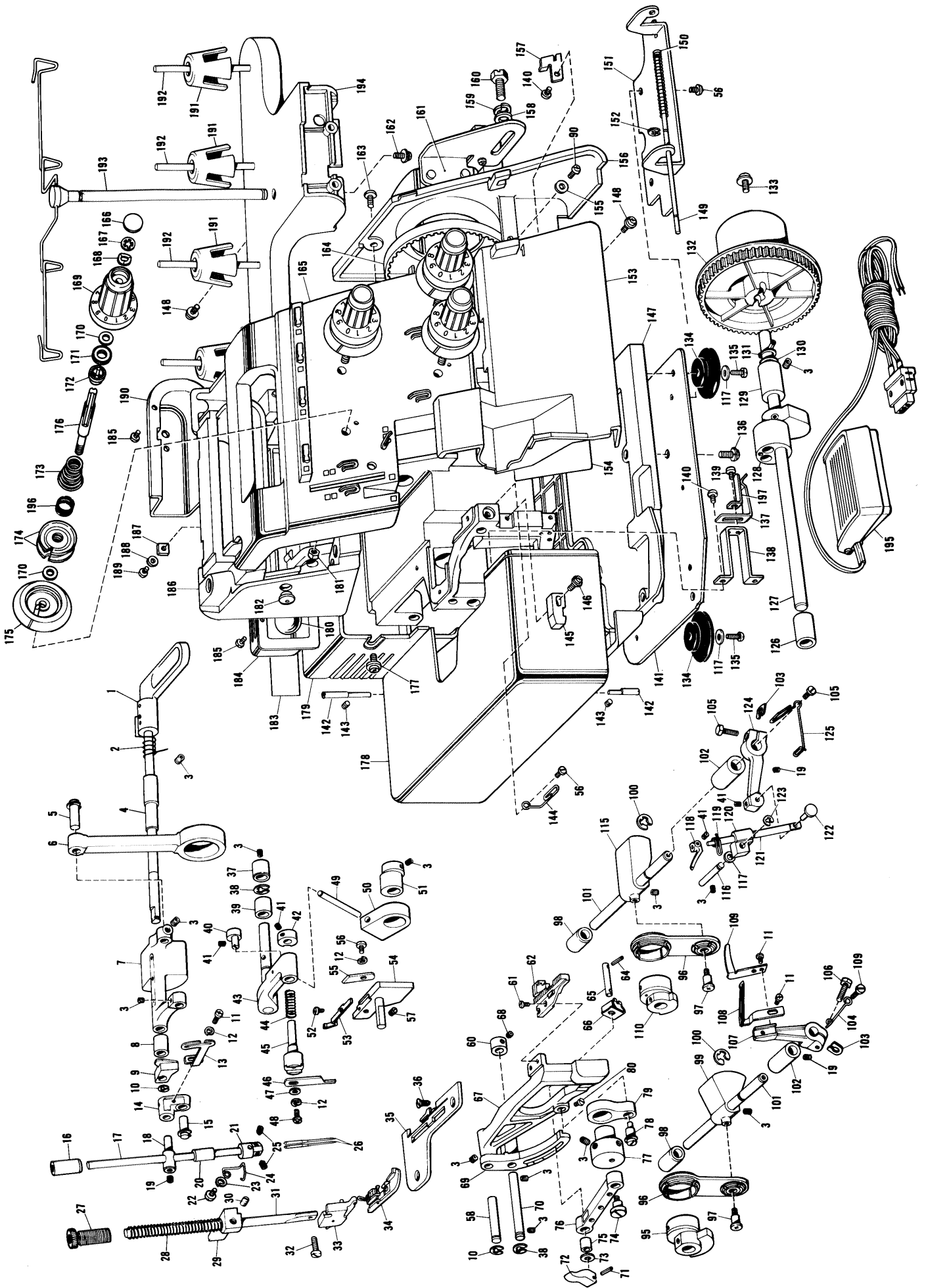




Husqvarna
Sewing machines
Huskylock M360

HUSQVARNA AB · HUSKVARNA · SWEDEN



Ref. No.	Parts No.	Parts Name	Ref. No.	Parts No.	Parts Name	Ref. No.	Parts No.	Parts Name	Ref. No.	Parts No.	Parts Name	Ref. No.	Parts No.	Parts Name
1	138877006	Presser bar lifter	62	047201442	Feed dog	140	037300815	Set screw	195		Set screw	195		Control complete
2	138877001	Spring	64	047201442	Spring pin	141		Base plate	196	X75883001	Under looper tension spring	196	X75883001	Under looper tension spring
3	012500632	Set screw	65	127560001	Feed adjusting shaft	142	126791001	Hinge pin	197	X75921001	Spring fixing plate	197	X75921001	Spring fixing plate
4	147085000	Driving shaft bushing, right	66	127560001	Spring	143	127560001	Set screw		014300332	Set screw		122991002	Vinyl bag for accessories
5	127189001	Rod shaft	67	075786001	Feed bar	144	X75635000	Looper thread guide		X75901001	Screw driver		X75901001	Screw driver
6	138839000	Needle bar rod	68	014400532	Set screw	145	X75619001	Spring stopper		X75902001	Pincette		X75902001	Pincette
7	126566000	Needle bar driving lever	69	X75723000	Feed bar lever	146	060401206	Set screw		127679003	Needle set		127679003	Needle set
8	142822000	Driving shaft bushing, left	70	X75080001	Feed shaft	147	X75894001	Oil pan		X75906001	Machine brush		X75906001	Machine brush
9	138879000	Presser lifter cam	71	047200842	Spring pin	148	X75720001	Set screw		X75399000	Spool cap		X75399000	Spool cap
10	048050346	Stop ring	72	127559000	Feed adjusting cam	149	X75629001	Front cover guide shaft		X75903001	Wrench 1.5		X75903001	Wrench 1.5
11	062670612	Set screw	73	025040232	Washer	150	126519000	Spring		X75904000	Thread net		X75904000	Thread net
12	028040242	Spring washer	74	126582001	Stud screw	151	X75628001	Front cover hinge plate		193365011	Instruction book (English)		193365011	Instruction book (English)
13	127800001	Thread take up	75	127561000	Feed link bushing	152	048020346	Stop ring		126736001	Machine cover		126736001	Machine cover
14	126782001	Needle bar connecting link	76	127776000	Feed link	153	X76163001	Font cover						
15	127186001	Needle bar link shaft	77	X05002000	Feed eccentric wheel	154	X75774002	Threading sticker						
16	126702000	Needle bar bushing, upper	78	127859001	Vertical adjusting shaft	155	025040332	Washer						
17	X75650001	Needle bar	79	126872000	Vertical feed lever	156	X75615001	Belt cover						
18	126656001	Needle bar connecting stud	80	104908002	Set screw	157	X75632001	Front cover hook						
19	014060622	Set screw	90	062400804	Set screw	158	100197004	Washer						
20	126703000	Needle bar bushing, lower	95	127839001	Double chain looper eccentric wheel	159	203735001	Spring washer						
21	X75673001	Needle clamp	96	X75391001	Double chain looper rod	160	103741001	Set screw						
22	060300616	Set screw	97	X75317001	Stud screw	161		Motor complete						
24	X75674000	Needle bar thread guide	98	126661000	Looper shaft bushing, rear	162	X75770001	Set screw						
25	016300422	Set screw	100	048060342	Stop ring	163	060400606	Set screw						
26	142935014	Needle #14	101	X75679000	Doubly chain looper shaft	164	126653001	Timing belt						
27	142860001	Presser adjusting screw	102	126610000	Looper shaft bushing, front	165	X76144001	Panel assembly						
28	126662001	Presser bar spring	103	X05281001	Washer	166	X75627001	Tension dial plate						
29	127198000	Presser bar guide bracket	104	127685001	Looper thread take up	167	138384001	Stop ring						
30	100058003	Set screw	105	105123003	Set screw	168	X75729001	Spring washer						
31	126660001	Presser bar	106	017501415	Set screw	169	X76146001	Needle tension dial, l						
32	126851001	Set screw	107	X05077001	Under looper lever		X76146002	Needle tension dial, r						
33	138881001	Presser holder assembly	108	127840001	Double chain looper assembly		X76146003	Over looper tension dial						
34	127887001	Presser foot assembly	109	127813001	Needle guard plate	170	025050132	Washer						
35	X75694001	Needle plate	110	138792001	Looper rod eccentric wheel	171	X05015000	Dial ratchet						
36	100032003	Set screw	115	127822000	Looper joint	172	X75051000	Tension spring washer						
37	126594000	Driving arm bushing, right	116	127784001	Guide shaft	173	127848001	Needle tension spring						
38	048070342	Stop ring	117	025710232	Washer		127849001	Over looper tension spring						
39	126595000	Driving arm bushing, left	118	127814001	Over looper		127850001	Under looper tension spring						
40	127658001	Upper knife holder guide shaft	119	127817001	Over looper thread guide	174	X75717001	Tension disc						
41	014400422	Set screw	120	127828000	Over looper shaft guide	175	X75618001	Tension bracket						
42	127669001	Upper knife holder guide	121	127786001	Over looper shaft		X05012000	Tension control stud						
43	127792001	Upper knife driving arm	122	127785001	Over looper stud shaft	177	X75721001	Set screw						
44	126772001	Upper knife presser spring	123	048040342	Stop ring	178	X76143001	Cloth plate cover assembly						
45	126769001	Upper knife holder	124	X05076001	Over looper shaft lever	179	126536004	Motor cover						
46	127734001	Upper knife	125	127690000	Looper thread take up	180		Sew light assembly						
47	025350332	Washer	126	127690000	Driving shaft bushing, left	181	021500106	Nut						
48	060670812	Set screw	127	127788001	Driving shaft	182	114255001	Cap						
49	127805001	Upper knife driving lever	128	127833001	Needle bar eccentric wheel assembly	183		Model mark						
50	127795000	Upper knife driving lever guide	129	126588000	Driving shaft bushing, right	184	127742003	Rear cover, r						
51	127783000	Upper knife eccentric wheel	130	127797000	Washer	185	062300604	Set screw						
52	000020412	Set screw	131	048100142	Stop ring	186	X75622001	Machine body						
53	X75668001	Needle guard	132	127830005	Timing pulley	187	127254001	Nut						
54	X75675001	Lower knife holder	133	138849001	Set screw	188	126850000	Washer						
55	X05007001	Lower knife	134	126540000	Cushion	189	062401206	Set screw						
56	060400612	Set screw	135	142957001	Set screw	190	X75633001	Rear cover, a						
57	151605002	Set screw	136	138850001	Set screw	191	126863001	Spool cushion						
58	126584000	Feed bar shaft	137	X76300001	Cloth plate cover spring plate	192	142914001	Spool pin						
60	X75150001	Set collar	138	X75639001	Spring plate base	193	X75695001	Spool stand assembly						
61	100080003	Set screw	139	060300616	Set screw	194	127056002	Spool stand base						