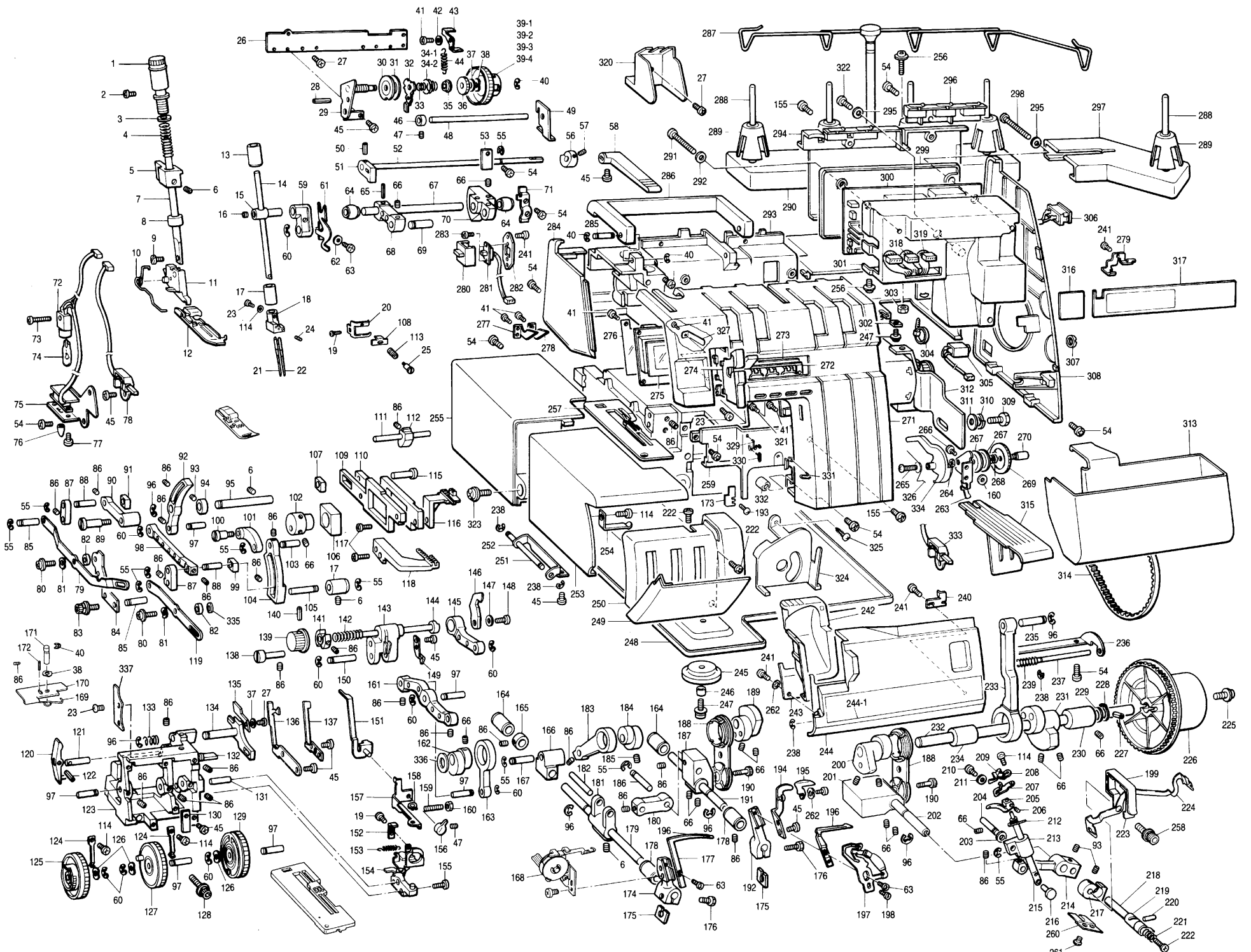


Husqvarna Sewing Machines
Huskylock 1002



Ref. No.	Parts No.	Parts Name	Ref. No.	Parts No.	Parts Name	Ref. No.	Parts No.	Parts Name	Ref. No.	Parts No.	Parts Name
1	X76593001	Pressure adjustment dial	57	014300532	Screw	117	060400812	Screw	177	X76806001	Double chain looper
2	062300506	Screw	58	X76597001	Presser foot lever	118	XB0062001	Differential feed dog	178		Looper lever shaft bushing, front
3	X76531001	Washer	59	126782001	Needle bar link A	119	X76690001	Feed adjusting link C	179	X76819000	Double chain looper shaft
4	X77025001	Presser adjustment spring	60	048050346	Stop ring	120	X76734000	Lower blade movable lever	180	X76797000	Double chain link
5	X75099000	Presser bar bracket	61	XB0143001	Thread take-up	121	X75090001	Lever holder shaft	181	XB0076000	Double chain driving arm
6	014500522	Screw	62	028040242	Spring washer	122	047301442	Spring pin	182	X76798001	Double chain link shaft A
7	X75134000	Presser bar	63	062670612	Screw	123	XB0002000	Needle plate base	183	X76787001	Double chain rod
8	X75542000	Presser bar felt	64	X75071000	Crankshaft bushing	124	X76688001	Dial guide spring	184	X77946000	Double chain eccentric wheel
9	126851001	Screw	65	047301842	Spring pin	125	XB0121001	Differential feed dial	185	012400532	Screw
10	X76602101	Presser foot spring	66	012500632	Screw	126	X76687000	Wave washer	186	X76802001	Double chain link shaft B
11	X77862001	Presser foot holder assembly	67	X76504001	Needle bar crankshaft	127	XB0120001	Feed dial	187	X77943000	Under looper balance
12	XB0070001	Presser foot assembly standard	68	X75063000	Needle bar crank	128	X76677001	Set screw	188	X75391001	Looper rod assembly
13	126702000	Needle bar bushing, upper	69	X75217001	Needle bar rod shaft A	129	XB0085001	Lower blade dial assembly	189	X76167001	Under looper rod eccentric wheel
14	X76510001	Needle bar	70	X76505000	Needle bar driving lever	130	X76496001	Control front cover spring	190	018401432	Set screw
15	126656001	Needle bar connecting stud	71	X75058001	Upper shaft bushing presser	131	X76552000	Stud shaft	191	X76751000	Under looper lever shaft
16	014060632	Screw	72	X53086101	Sew-light assembly	132	X76737001	Lower blade guide shaft	192	X77945001	Under looper lever
17	X76518000	Needle bar bushing, lower	73	002261405	Screw	133	X75234001	Lower blade spring	193	062400804	Screw
18	X77983001	Needle clamp	74	X50228001	Sew-light bulb	134	XB0056000	Lower blade holder	194	X76779001	Needle guard plate A
19	062300406	Screw	75	X76912001	Sew-light plate	135	X76728001	Lower blade	195	X76780001	Needle guard plate B
20	X77991001	Needle bar thread guide	76	X75461001	Sew-light switch cap	136	X77989001	Fixed needle guard A	196	X76771001	Under looper
21	X75577014	Needle #90	77	002020416	Screw	137	X77990001	Fixed needle guard B	197	XB0019001	Under looper thread guide assembly
22	X75577012	Needle #80	78	X58432001	Senser assembly	138	X76703001	Upper blade holder guide shaft	198	062670312	Screw
23	062300806	Screw	79	X76092001	Differential adjusting link C	139	X75088002	Upper blade knob	199	X77954001	Looper thread take-up lever A
24	XB0038001	Screw	80	138853001	Set screw	140	047201642	Spring pin	200	X77941001	Overlooper rod eccentric wheel
25	X77993001	Screw	81	X75729001	Wave washer	141	X76708000	Upper blade holder guide	201	X77942000	Overlooper balance
26	X76871001	Thread tension bracket	82	X76423000	Spacer	142	X76706001	Upper blade presser spring	202	X76749000	Overlooper lever shaft
27	060400612	Screw	83	X76678001	Set screw	143	XB0058000	Upper blade driving plate	203	025050132	Washer
28	047251042	Spring pin	84	X76420001	Material plate cover bracket	144	XB0074001	Upper blade holder	204	127784001	Overlooper shaft guide shaft
29	X76873001	Thread tension base assembly	85	X76686001	Adjusting link shaft	145	X76720000	Upper blade arm	205	X75094001	Overlooper M
30	X75981001	Thread tension disc A	86	014400422	Screw	146	X76723001	Upper blade	206	014400332	Screw
31	X75121001	Thread tension disc	87	X76639000	Adjusting link	147	025350332	Washer	207	X76762001	Looper change base
32	X76877001	Thread tension releaser	88	X76647001	Adjusting block shaft	148	060670812	Screw	208	X76763001	Looper change spring
33	X76460001	Thread tension spring SL	89	X76620001	Differential link shaft	149	X76704001	Safety mechanism	209	X76764001	Looper change cam
34-1	X76015001	Thread tension spring	90	X76619000	Differential adjusting link	150	X76711001	Upper blade driving arm shaft	210	060400416	Screw
34-2	X76023001	Thread tension spring	91	X76645000	Differential feed adjusting block	151	XB0171001	Movable stitch tongue assembly	211	X05282001	Washer
35	X75992001	Thread tension spring washer, upper	92	X76631000	Feed bar lever	152	X76542001	Stitch presser	212	X77994001	Overlooper thread guide
36	X76878000	Thread tension nut	93	014400532	Screw	153	X76545001	Stitch spring	213	X76766001	Overlooper shaft guide
37	025040232	Washer	94	X75150001	Collar	154	XB0023001	Stitch tongue holder assembly	214	X76756000	Looper change lever
38	X76879000	Wave washer	95	X76633001	Feed bar lever shaft	155	060401206	Screw	215	X75982001	Overlooper shaft
39-1	X76893001	Thread tension dial (Yellow)	96	048060342	Stop ring	156	X76544001	Stitch changing knob	216	127785001	Overlooper lower shaft
39-2	X76893002	Thread tension dial (Red)	97	X76637001	Feed bar link shaft	157	X76543001	Stitch plate	217	X76758000	Looper change base
39-3	X76893003	Thread tension dial (Green)	98	X76635001	Feed bar link	158	048050142	Stop ring	218	X76924001	Looper change shaft
39-4	X76893004	Thread tension dial (Blue)	99	X76644000	Feed adjusting block	159	012401632	Screw	219	X76923001	Looper change knob
40	048030342	Stop ring	100	X76643001	Feed eccentric wheel shaft	160	021400312	Nut	220	X76925001	Change guide shaft
41	037200615	Tapping screw	101	X76624000	Feed link	161	X76698000	Upper blade driving arm	221	126808001	Tension spring
42	026020235	Washer	102	X76641000	Feed eccentric wheel	162	X77939000	Upper blade eccentric wheel	222	060300806	Screw
43	X76882001	Dial clutch	103	X76626001	Feed link shaft	163	X75140000	Upper blade link	223	X77955001	Looper thread take-up lever B
44	X76883001	Clutch spring	104	X76623000	Feed adjusting lever	164	126611000	Looper lever shaft bushing, rear	224	X77961001	Double chain looper thread take-up lever
45	060300616	Screw	105	X76628001	Feed adjusting lever shaft	165	X76800001	Horizontal lever collar	225	X76398001	Set screw
46	X76230001	Thread tension release block	106	X76642000	Vertical feed block	166	X76790000	Horizontal lever	226	X75202001	Handwheel
47	014300332	Screw	107	X76648000	Differential feed bar block	167	X76792001	Horizontal lever shaft	227	047402542	Spring pin
48	X76887001	Thread tension release shaft C	108	X77994001	Pre-tension plate	168	XB0028001	Double chain looper thread guide assembly	228	048100142	Stop ring
49	X76888001	Thread tension release plate	109	XB0063000	Differential feed bar C	169	X77934001	Needle plate fixing spring	229	127797000	Thrust washer
50	047160842	Spring pin	110	X76614000	Main feed bar	170	X77932001	Needle plate fixing lever	230	126558000	Driving shaft bushing, right
51	X75118000	Presser lifter cam	111	X76684001	Feed bar guide shaft	171	X77933001	Needle plate fixing shaft	231	X77930000	Needle bar eccentric wheel
52	X76596001	Presser lifter shaft	112	X77937000	Needle plate supporting collar	172	047200842	Spring pin	232	X76501001	Driving shaft
53	X75308001	Shaft presser	113	X77992001	Pre-tension spring	173	X77935001	Needle plate holding plate	233	138839000	Needle bar rod
54	060400606	Screw	114	028030246	Spring washer	174	X76805001	Double chain lever	234	XB0068000	Driving shaft bushing, left
55	048040342	Stop ring	115	X76649000	Feed bar shaft	175	X05281001	Square washer	235	X75065001	Needle bar rod shaft
56	X75158001	Tension release cam	116	XB0060001	Main feed dog	176	017501615	Looper lever fixing screw	236	X76459001	Front cover hinge

Ref. No.	Parts No.	Parts Name	Ref. No.	Parts No.	Parts Name	Ref. No.	Parts No.	Parts Name
237	X75629001	Front cover hinge shaft	292	130971000	Polyethylene washer		X76435000	Accessory box
238	048020346	Stop ring	293	XB0001001	Machine body		X75437001	Screwdriver
239	126519000	Front cover coil spring	294	XB0035001	Rearcover assembly		XB0126000	Screwdriver
240	X75632991	Front cover hook	295	554166000	Insulation washer		X75433001	Tweezers
241	037300815	Tapping screw	296	XB0037001	Thread rectifier body assembly		523603001	Brush assembly
242	X76457001	Blade cover 1	297	X76905001	Spool stand base		X75399000	Spool cap N
243	X76458001	Blade cover bracket	298	002304005	Screw		127610000	Net
244	XB0066001	Front cover	299	X76916001	Insulation cover plate		127912001	Oiler assembly
244-1	X77976001	Front cover plate (VIKING)	300	XA2836001	Base plate assembly 120ET		123440000	Sewing sample bag
	X77981001	Front cover plate (HUSQ)		XA2833001	Base plate assembly 230ET		X75377003	Needle set assembly
245	X75545000	Cushion A	301	X76915001	Insulation cover		X77016001	Needle set assembly (#70, #80, #90)
246	X75546000	Spacer	302	127254001	Nut		X77018001	Needle set assembly (#80, #90)
247	X75720001	Set screw	303	021400215	Nut		XB0135001	Video tape
248	X76445001	Oil pan	304	122772000	Band		234522001	Controller FC-301-81
249	X76480000	Control front cover	305	X58428001	Jack assembly		X59326001	Power cord SAA
250	XB0102001	Control cover plate		X59346001	Jack assembly (Germany)		X00181001	Power cord BS (without plug)
251	X76473001	Material plate cover hinge shaft	306	X58908001	Inlet switch assembly E		131430001	Power cord
252	X76449001	Material plate cover hinge		X58909001	Inlet switch assembly UI		X50018001	Power cord CSA
253	X76447001	Material plate front cover		X58910001	Inlet switch assembly CSA		X57079001	Power cord BS (without plug)
254	X76448001	Material plate cover spring	307	X51271001	Jack nut		X76661001	Blind stitch presser foot set
255	X76474001	Material p late cover B	308	XB0067001	Belt cover E		X76670002	Pearl sequence presser foot set
256	X75770001	Set screw	309	103741001	Screw		X76668002	Piping presser foot set
257	XB0020001	Needle plate assembly, standard	310	203735001	Spring washer		X76663001	Elastic taping presser foot set
258	XB0148001	Set screw	311	100197004	Washer		X77963001	Needle plate C
259	X77986001	Inner cover	312	J01659001	Motor MM-351-23 (120V)		XB0072001	Presser foot assembly C
260	X77553001	Looper change lever guide plate		J01660001	Motor MM-351-57 (220V, Germany)			
261	062300412	Screw		J01661001	Motor MM-351-58 (220V, Switzerland)			
262	026030232	Washer		J01662001	Motor MM-351-59 (230V)			
263	X76839001	Double chain looper thread tension base		J01663001	Motor MM-351-60 (240V)			
264	021300102	Nut	313	XB0103001	Dust box (VIKING)			
265	026031832	Screw		XB0104001	Dust box (HUSQ)			
266	108263001	Thread tension disc	314	X76413000	Timing belt			
267	125269001	Thread tension disc	315	X76919001	Blade cover 2			
268	XB0032001	Double chain spring	316	X77977001	Panel plate sheet, left (VIKING)			
269	X76842001	Double chain looper thread tension dial		X77999001	Panel plate sheet, left (HUSQ)			
270	X76840001	Double chain looper thread tension shaft	317	X77975001	LCD sheet (VIKING)			
271	XB0108001	Panel assembly		X77978001	LCD sheet (HUSQ)			
272	X76913002	LCD switch	318	X58423001	Lead wire assembly #1			
273	X58424001	Key base assembly	319	X58427001	Lead wire assembly #2			
274	X76867001	Take-up lever cover	320	X76425000	Cord cover			
275	X58420001	LCD base assembly	321	037200416	Tapping screw			
276	X76439000	Insulation sheet	322	037310612	Tapping screw			
277	X76822001	Needle thread guide, left	323	X77012001	Set screw			
278	X76823001	Needle thread guide, right	324	XB0059001	DL thread take-up lever cover			
279	X76845001	Needle thread guide	325	037300612	Tapping screw			
280	X50963001	Switch knob	326	X77947001	Double chain looper thread unrelease spring			
281	X58430001	Speed control switch assembly	327	X77949001	Needle thread separator			
282	X76917001	Switch holder	328	X77985001	Double chain looper thread release lever			
283	002020416	Screw	329	X77948001	Overlooper inner cover thread guide			
284	X76947001	Sew-light cover assembly	330	127778001	Looper thread guide			
285	X75133001	Handle shaft	331	127943001	Needle thread guide			
286	X76495001	Handle	332	X75369000	Nut			
287	X76902001	Antenna assembly	333	XA2837001	Front cover SW assembly			
288	142914001	Spool pin	334	X77985001	DL thread release lever			
289	126863001	Spool cushion	335	025040333	Washer			
290	X75254001	Spool stand base	336	025100336	Washer			
291	062303012	Screw	337	X77940001	Blade supporting plate			